

Anti-Kir6.2/BIR antibody ab79171

★★★★★ [1 Abreviews](#) [7 References](#) [画像数 3](#)

製品の概要

製品名	Anti-Kir6.2/BIR antibody
製品の詳細	Rabbit polyclonal to Kir6.2/BIR
由来種	Rabbit
アプリケーション	適用あり: WB, IHC-P, ICC/IF
種交差性	交差種: Mouse, Human
免疫原	Synthetic peptide. This information is proprietary to Abcam and/or its suppliers.
特記事項	<p>The Life Science industry has been in the grips of a reproducibility crisis for a number of years. Abcam is leading the way in addressing this with our range of recombinant monoclonal antibodies and knockout edited cell lines for gold-standard validation. Please check that this product meets your needs before purchasing.</p> <p>If you have any questions, special requirements or concerns, please send us an inquiry and/or contact our Support team ahead of purchase. Recommended alternatives for this product can be found below, along with publications, customer reviews and Q&As</p>

製品の特性

製品の状態	Liquid
保存方法	Shipped at 4°C. Upon delivery aliquot and store at -20°C. Avoid freeze / thaw cycles.
バッファー	<p>pH: 7.40</p> <p>Preservative: 0.02% Sodium azide</p> <p>Constituents: 0.87% Sodium chloride, PBS, 50% Glycerol (glycerin, glycerine)</p>
精製度	Without Mg ²⁺ and Ca ²⁺
特記事項 (精製)	Immunogen affinity purified
	The antibody was affinity purified from rabbit antiserum by affinity chromatography using epitope specific immunogen.
ポリ/モノ	ポリクローナル
アイソタイプ	IgG

アプリケーション

The Abpromise guarantee

Abpromise保証は、次のテスト済みアプリケーションにおけるab79171の使用に適用されます

アプリケーションノートには、推奨の開始希釈率がありますが、適切な希釈率につきましてはご確認ください。

アプリケーション	Abreviews	特記事項
WB	★★★★★ (1)	1/500 - 1/1000. Predicted molecular weight: 44 kDa.
IHC-P		1/50 - 1/100.
ICC/IF		1/500 - 1/1000.

ターゲット情報

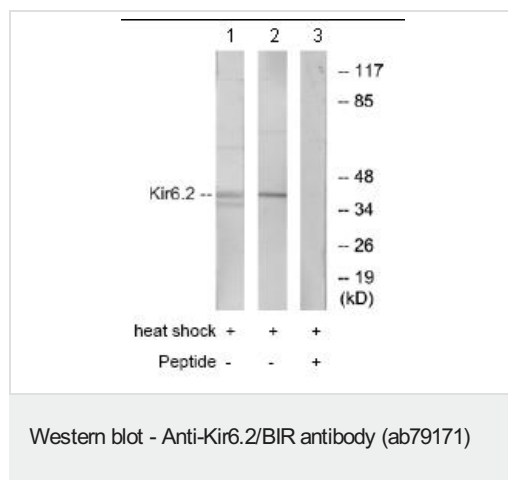
関連性

ATP-sensitive potassium (K(ATP)) channels are found in endocrine cells, neurons and both smooth and striated muscle, where they play an important role in controlling insulin secretion and vascular tone, and protect neurons under metabolic stress. Kir6.2 is a member of the inward rectifier potassium channel family, which is characterised by a greater tendency to allow potassium flow into the cell rather than out of it. It associates with the sulphonylurea receptor SUR1/ABCC8 to form a subfamily of K(ATP) channels that, when mutated or misregulated, are associated with forms of hyperinsulinemic hypoglycemia, neonatal diabetes, or pre-disposition to type 2 diabetes mellitus.

細胞内局在

Cell Membrane; Multi-pass membrane protein

画像



All lanes : Anti-Kir6.2/BIR antibody (ab79171) at 1/500 dilution

Lane 1 : extracts from HeLa cells treated with heat shock

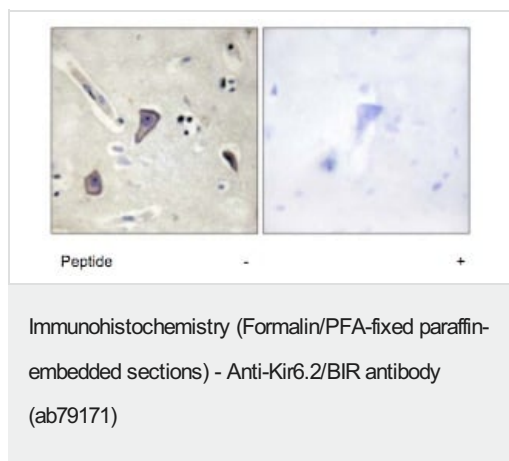
Lane 2 : extracts from NIH3T3 cells treated with heat shock

Lane 3 : extracts from NIH3T3 cells treated with heat shock with immunizing peptide at 10 µg

Lysates/proteins at 20 µg per lane.

Predicted band size: 44 kDa

Observed band size: 44 kDa



Immunohistochemical analysis of Kir6.2/BIR in paraffin embedded human brain tissue using a 1/50 dilution of ab79171, with (right) or without (left) pre treatment with the immunizing peptide.



Immunofluorescence analysis of Kir6.2/BIR in HeLa cells, using a 1/500 dilution of ab79171, with (right) or without (left) pre treatment with the immunizing peptide.

Please note: All products are "FOR RESEARCH USE ONLY. NOT FOR USE IN DIAGNOSTIC PROCEDURES"

Our Abpromise to you: Quality guaranteed and expert technical support

- Replacement or refund for products not performing as stated on the datasheet
- Valid for 12 months from date of delivery
- Response to your inquiry within 24 hours
- We provide support in Chinese, English, French, German, Japanese and Spanish
- Extensive multi-media technical resources to help you
- We investigate all quality concerns to ensure our products perform to the highest standards

If the product does not perform as described on this datasheet, we will offer a refund or replacement. For full details of the Abpromise, please visit <https://www.abcam.co.jp/abpromise> or contact our technical team.

Terms and conditions

- Guarantee only valid for products bought direct from Abcam or one of our authorized distributors