


Anti-KIR2DS4 antibody [EPR7759] ab140638

リコンビナント RabMAb[®]

画像数 3

製品の概要

製品名	Anti-KIR2DS4 antibody [EPR7759]
製品の詳細	Rabbit monoclonal [EPR7759] to KIR2DS4
由来種	Rabbit
アプリケーション	適用あり: Flow Cyt (Intra), WB 適用なし: ICC/IF, IHC-P or IP
種交差性	交差種: Human 交差が予測される動物種: Mouse, Rat 
免疫原	Synthetic peptide within Human KIR2DS4 aa 250-350 (C terminal). The exact sequence is proprietary.
ポジティブ・コントロール	293T, K562, HeLa and TF1 cell lysates; permeabilized K562 cells.
特記事項	This product is a recombinant monoclonal antibody, which offers several advantages including: <ul style="list-style-type: none"> - High batch-to-batch consistency and reproducibility - Improved sensitivity and specificity - Long-term security of supply - Animal-free production For more information see here . Our RabMAb [®] technology is a patented hybridoma-based technology for making rabbit monoclonal antibodies. For details on our patents, please refer to RabMAb[®] patents .

製品の特性

製品の状態	Liquid
保存方法	Shipped at 4°C. Store at -20°C.
バッファー	pH: 7.2 Preservative: 0.01% Sodium azide Constituents: 9% PBS, 40% Glycerol (glycerin, glycerine), 0.05% BSA, 50% Tissue culture supernatant
精製度	Tissue culture supernatant
ポリ/モノ	モノクローナル

クローン名 EPR7759
アイソタイプ IgG

アプリケーション

The Abpromise guarantee **Abpromise保証は、次のテスト済みアプリケーションにおけるab140638の使用に適用されず**
アプリケーションノートには、推奨の開始希釈率がありますが、適切な希釈率につきましてはご検討ください。

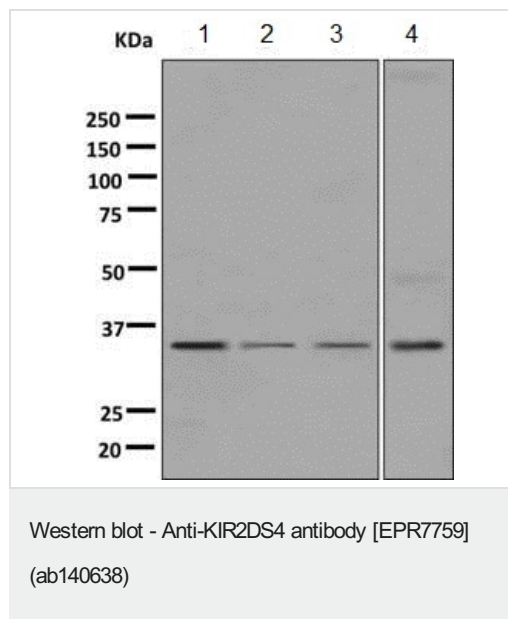
アプリケーション	Abreviews	特記事項
Flow Cyt (Intra)		1/100 - 1/500. ab172730 - Rabbit monoclonal IgG, is suitable for use as an isotype control with this antibody.
WB		1/1000 - 1/10000. Predicted molecular weight: 34 kDa.

追加情報 Is unsuitable for ICC/IF, IHC-P or IP.

ターゲット情報

機能 Receptor on natural killer (NK) cells for HLA-C alleles. Does not inhibit the activity of NK cells.
配列類似性 Belongs to the immunoglobulin superfamily.
Contains 2 Ig-like C2-type (immunoglobulin-like) domains.
細胞内局在 Cell membrane.

画像



All lanes : Anti-KIR2DS4 antibody [EPR7759] (ab140638) at 1/1000 dilution

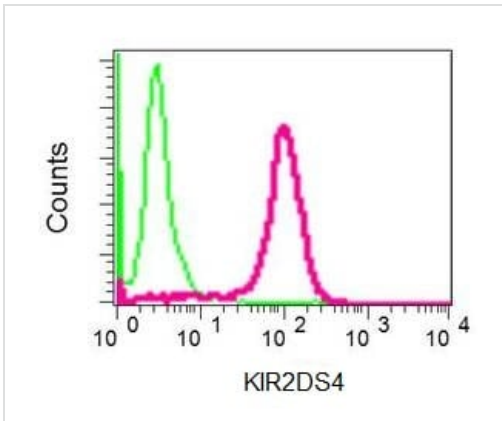
Lane 1 : 293T cell lysate
Lane 2 : K562 cell lysate
Lane 3 : HeLa cell lysate
Lane 4 : TF1 cell lysate

Lysates/proteins at 10 µg per lane.

Secondary

All lanes : HRP labelled Goat anti-Rabbit at 1/2000 dilution




Predicted band size: 34 kDa



Intracellular flow cytometric analysis of permeabilized K562 cells labelling KIR2DS4 with ab140638 at 1/100 dilution (red); rabbit IgG negative control (green).

Flow Cytometry (Intracellular) - Anti-KIR2DS4 antibody [EPR7759] (ab140638)

Why choose a recombinant antibody?

 <p>Research with confidence Consistent and reproducible results</p>	 <p>Long-term and scalable supply Recombinant technology</p>
 <p>Success from the first experiment Confirmed specificity</p>	 <p>Ethical standards compliant Animal-free production</p>

Anti-KIR2DS4 antibody [EPR7759] (ab140638)

Please note: All products are "FOR RESEARCH USE ONLY. NOT FOR USE IN DIAGNOSTIC PROCEDURES"

Our Abpromise to you: Quality guaranteed and expert technical support

- Replacement or refund for products not performing as stated on the datasheet
- Valid for 12 months from date of delivery
- Response to your inquiry within 24 hours
- We provide support in Chinese, English, French, German, Japanese and Spanish
- Extensive multi-media technical resources to help you
- We investigate all quality concerns to ensure our products perform to the highest standards

If the product does not perform as described on this datasheet, we will offer a refund or replacement. For full details of the Abpromise, please visit <https://www.abcam.co.jp/abpromise> or contact our technical team.

Terms and conditions

- Guarantee only valid for products bought direct from Abcam or one of our authorized distributors