


### Anti-Kindlin 2 antibody ab74030

★★★★☆ **6 Abreviews**   **13 References**   画像数 4

#### 製品の概要

製品名	Anti-Kindlin 2 antibody
製品の詳細	Rabbit polyclonal to Kindlin 2
由来種	Rabbit
アプリケーション	<b>適用あり:</b> IP, WB, ICC/IF
種交差性	<b>交差種:</b> Human <b>交差が予測される動物種:</b> Mouse, Rat, Cow 
免疫原	Synthetic peptide corresponding to Human Kindlin 2 aa 450-550 (internal sequence) conjugated to keyhole limpet haemocyanin. (Peptide available as <b>ab74029</b> )
特記事項	<p>The Life Science industry has been in the grips of a reproducibility crisis for a number of years. Abcam is leading the way in addressing this with our range of recombinant monoclonal antibodies and knockout edited cell lines for gold-standard validation. Please check that this product meets your needs before purchasing.</p> <p>If you have any questions, special requirements or concerns, please send us an inquiry and/or contact our Support team ahead of purchase. Recommended alternatives for this product can be found below, along with publications, customer reviews and Q&amp;As</p>

#### 製品の特性

製品の状態	Liquid
保存方法	Shipped at 4°C. Store at +4°C short term (1-2 weeks). Upon delivery aliquot. Store at -20°C or -80°C. Avoid freeze / thaw cycle.
バッファー	pH: 7.40 Preservative: 0.02% Sodium azide Constituent: PBS  Batches of this product that have a concentration < 1mg/ml may have BSA added as a stabilising agent. If you would like information about the formulation of a specific lot, please contact our scientific support team who will be happy to help.
精製度	Immunogen affinity purified
ポリ/モノ	ポリクローナル

アイソタイプ

IgG

アプリケーション

The Abpromise guarantee

Abpromise保証は、次のテスト済みアプリケーションにおけるab74030の使用に適用されます

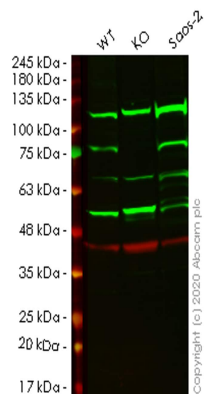
アプリケーションノートには、推奨の開始希釈率がありますが、適切な希釈率につきましてはご検討ください。

アプリケーション	Abreviews	特記事項
IP		Use a concentration of 5 µg/ml.
WB	★★★★★ (3)	Use a concentration of 1 µg/ml. Detects a band of approximately 78 kDa (predicted molecular weight: 78 kDa).
ICC/IF	★★★★★ (2)	Use at an assay dependent concentration.

ターゲット情報

機能	Participates in the connection between ECM adhesion sites and the actin cytoskeleton and also in the orchestration of actin assembly and cell shape modulation. Recruits migfilin (FBLP1) protein to cell-ECM focal adhesion sites.
組織特異性	Ubiquitous. Found in numerous tumor tissues.
配列類似性	Belongs to the kindlin family. Contains 1 FERM domain. Contains 1 PH domain.
ドメイン	The FERM domain is not correctly detected by PROSITE or Pfam techniques because it contains the insertion of a PH domain.
細胞内局在	Cytoplasm > cell cortex. Cytoplasm > cytoskeleton. Cell junction > focal adhesion. Within actin stress fibers at cell-ECM focal adhesion sites.

画像



Western blot - Anti-Kindlin 2 antibody (ab74030)

**All lanes :** Anti-Kindlin 2 antibody (ab74030) at 1/500 dilution

**Lane 1 :** Wild-type HeLa cell lysate

**Lane 2 :** FERMT2 knockout HeLa cell lysate

**Lane 3 :** Saos-2 cell lysate

Lysates/proteins at 20 µg per lane.

### Secondary

**All lanes :** Goat anti-Rabbit IgG H&L (IRDye® 800CW)  
preadsorbed ([ab216773](#)) at 1/10000 dilution

**Predicted band size:** 78 kDa

**Observed band size:** 78 kDa

**Lanes 1-3:** Merged signal (red and green). Green - ab74030 observed at 78 kDa. Red - loading control [ab8245](#) observed at 36 kDa.

ab74030 Anti-Kindlin 2 antibody was shown to specifically react with Kindlin 2 in wild-type HeLa cells. Loss of signal was observed when knockout cell line [ab265247](#) (knockout cell lysate [ab257436](#)) was used. Wild-type and Kindlin 2 knockout samples were subjected to SDS-PAGE. ab74030 and Anti-GAPDH antibody [6C5] - Loading Control ([ab8245](#)) were incubated overnight at 4°C at 1 in 500 dilution and 1 in 20000 dilution respectively. Blots were developed with Goat anti-Rabbit IgG H&L (IRDye® 800CW) preadsorbed ([ab216773](#)) and Goat anti-Mouse IgG H&L (IRDye® 680RD) preadsorbed ([ab216776](#)) secondary antibodies at 1 in 20000 dilution for 1 hour at room temperature before imaging.



Western blot - Anti-Kindlin 2 antibody (ab74030)

**All lanes :** Anti-Kindlin 2 antibody (ab74030) at 1 µg/ml

**Lane 1 :** HT 1080 (Human fibrosarcoma) Whole Cell Lysate

**Lane 2 :** SAOS-2 (sarcoma osteogenic) Whole Cell lysate

**Lane 3 :** Human testis tissue lysate - total protein ([ab30257](#))

**Lane 4 :** HeLa (Human epithelial carcinoma cell line) Nuclear Lysate

Lysates/proteins at 10 µg per lane.

## Secondary

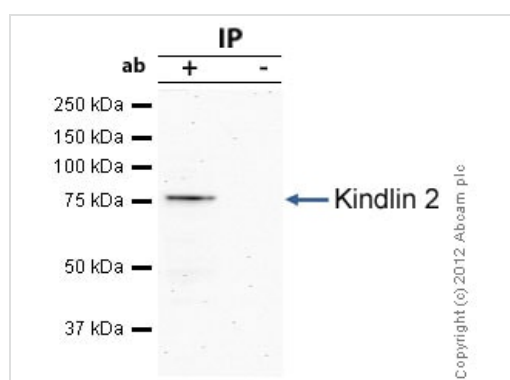
**All lanes :** Goat polyclonal to Rabbit IgG - H&L - Pre-Adsorbed (HRP) at 1/3000 dilution

Performed under reducing conditions.

**Predicted band size:** 78 kDa

**Observed band size:** 78 kDa

**Exposure time:** 8 minutes



Immunoprecipitation - Anti-Kindlin 2 antibody (ab74030)

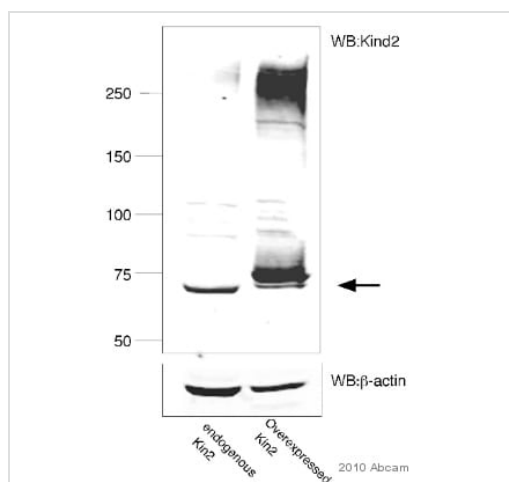
Kindlin 2 was immunoprecipitated using 0.5mg HeLa whole cell extract, 5µg of Rabbit polyclonal to Kindlin 2 and 50µl of protein G magnetic beads (+). No antibody was added to the control (-).

The antibody was incubated under agitation with Protein G beads for 10min, HeLa whole cell extract lysate diluted in RIPA buffer was added to each sample and incubated for a further 10min under agitation.

Proteins were eluted by addition of 40µl SDS loading buffer and incubated for 10min at 70°C; 10µl of each sample was separated on a SDS PAGE gel, transferred to a nitrocellulose membrane, blocked with 5% BSA and probed with ab74030.

Secondary: Mouse monoclonal [SB62a] Secondary Antibody to Rabbit IgG light chain (HRP) ([ab99697](#)).

Band: 78kDa; Kindlin 2



Western blot - Anti-Kindlin 2 antibody (ab74030)

This image is courtesy of an abreview submitted by Ana Kasirer-Friede, UCSD, United States

The kindlin 2 antibody (ab74030) was tested in lysate obtained from CHO cells either expressing endogenous levels of kindlin 2 (lane 1) and transfected CHO cells in which flag-tagged kindlin2 was overexpressed (lane 2). A specific band was at the expected molecular weight of approximately 72 kDa (+/- Flag-tag). β-actin was used to show loading in the two lanes.

**Please note:** All products are "FOR RESEARCH USE ONLY. NOT FOR USE IN DIAGNOSTIC PROCEDURES"

### Our Abpromise to you: Quality guaranteed and expert technical support

- Replacement or refund for products not performing as stated on the datasheet
- Valid for 12 months from date of delivery
- Response to your inquiry within 24 hours
- We provide support in Chinese, English, French, German, Japanese and Spanish
- Extensive multi-media technical resources to help you
- We investigate all quality concerns to ensure our products perform to the highest standards

If the product does not perform as described on this datasheet, we will offer a refund or replacement. For full details of the Abpromise, please visit <https://www.abcam.co.jp/abpromise> or contact our technical team.

### Terms and conditions

- Guarantee only valid for products bought direct from Abcam or one of our authorized distributors