



Anti-KIF5C antibody ab5630

★★★★★ [5 Abreviews](#) [16 References](#) [画像数 2](#)

製品の概要

製品名	Anti-KIF5C antibody
製品の詳細	Rabbit polyclonal to KIF5C
由来種	Rabbit
特異性	This antibody is specific for KIF5C and does not detect other kinesin isoforms.
アプリケーション	適用あり: IHC-P, WB
種交差性	交差種: Human
免疫原	Synthetic peptide corresponding to Human KIF5C aa 938-957. Sequence: AVHAIRGGGGSSNSTHYQK (Peptide available as ab41784)
	 Run BLAST with  Run BLAST with
特記事項	<p>The Life Science industry has been in the grips of a reproducibility crisis for a number of years. Abcam is leading the way in addressing this with our range of recombinant monoclonal antibodies and knockout edited cell lines for gold-standard validation. Please check that this product meets your needs before purchasing.</p> <p>If you have any questions, special requirements or concerns, please send us an inquiry and/or contact our Support team ahead of purchase. Recommended alternatives for this product can be found below, along with publications, customer reviews and Q&As</p>

製品の特性

製品の状態	Liquid
保存方法	Shipped at 4°C. Store at +4°C short term (1-2 weeks). Upon delivery aliquot. Store at -20°C or -80°C. Avoid freeze / thaw cycle.
バッファー	Preservative: 0.05% Sodium azide Constituents: 0.1% BSA, 99% PBS
精製度	Immunogen affinity purified
一次抗体 備考	Kinesins are a superfamily of microtubule-associated motor proteins involved in a variety of cellular processes including membranous organelle transport and cell division. Kinesin has been found in a variety of organisms and cell types and is subject to spatial and temporal regulation.

These proteins have a modular structure including a conserved motor domain of approximately 350 amino acids, which is responsible for microtubule binding and ATP hydrolysis. In addition to the motor domain, subfamily members share common domain organization, exhibit sequence similarity, motility properties, and cellular functions outside of the motor domain. There are currently three known Kinesin 5 family members denoted as A, B, and C. Kinesin 5A and kinesin 5C appear to be exclusively neuronal, whereas kinesin 5B appears to be ubiquitous in its expression.

ポリ/モノ
アイソタイプ

ポリクローナル
IgG

アプリケーション

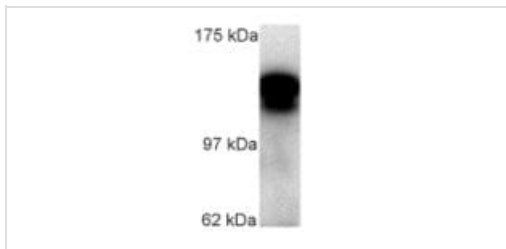
The Abpromise guarantee **Abpromise保証は、次のテスト済みアプリケーションにおけるab5630の使用に適用されます**
アプリケーションノートには、推奨の開始希釈率がありますが、適切な希釈率につきましてはご検討ください。

アプリケーション	Abreviews	特記事項
IHC-P		Use a concentration of 1 µg/ml. Perform heat mediated antigen retrieval with citrate buffer pH 6 before commencing with IHC staining protocol.
WB	★★★★★ (4)	Use a concentration of 0.5 µg/ml. Detects a band of approximately 110 kDa (predicted molecular weight: 110 kDa).

ターゲット情報

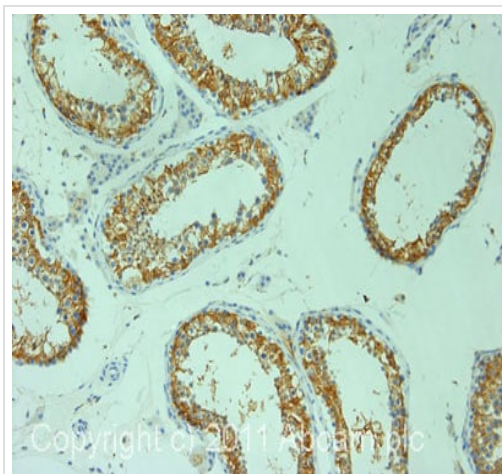
機能	Kinesin is a microtubule-associated force-producing protein that may play a role in organelle transport.
組織特異性	Highest expression in brain, prostate and testis, and moderate expression in kidney, small intestine and ovary.
配列類似性	Belongs to the kinesin-like protein family. Kinesin subfamily. Contains 1 kinesin-motor domain.
ドメイン	Composed of three structural domains: a large globular N-terminal domain which is responsible for the motor activity of kinesin (it hydrolyzes ATP and binds microtubule), a central alpha-helical coiled coil domain that mediates the heavy chain dimerization; and a small globular C-terminal domain which interacts with other proteins (such as the kinesin light chains), vesicles and membranous organelles.
細胞内局在	Cytoplasm > cytoskeleton.

画像



Western blot - Anti-KIF5C antibody (ab5630)

Shows a Western blot of KIF5C on human retinal extract using ab5630. The expected band at 110 kDa is seen along with an unidentified band at 100 kDa.



Immunohistochemistry (Formalin/PFA-fixed paraffin-embedded sections) - Anti-KIF5C antibody (ab5630)

IHC image of ab5630 staining in human normal testis formalin fixed paraffin embedded tissue section, performed on a Leica Bond™ system using the standard protocol F. The section was pre-treated using heat mediated antigen retrieval with sodium citrate buffer (pH6, epitope retrieval solution 1) for 20 mins. The section was then incubated with ab5630, 1µg/ml, for 15 mins at room temperature and detected using an HRP conjugated compact polymer system. DAB was used as the chromogen. The section was then counterstained with haematoxylin and mounted with DPX.

For other IHC staining systems (automated and non-automated) customers should optimize variable parameters such as antigen retrieval conditions, primary antibody concentration and antibody incubation times.

Please note: All products are "FOR RESEARCH USE ONLY. NOT FOR USE IN DIAGNOSTIC PROCEDURES"

Our Abpromise to you: Quality guaranteed and expert technical support

- Replacement or refund for products not performing as stated on the datasheet
- Valid for 12 months from date of delivery
- Response to your inquiry within 24 hours
- We provide support in Chinese, English, French, German, Japanese and Spanish
- Extensive multi-media technical resources to help you
- We investigate all quality concerns to ensure our products perform to the highest standards

If the product does not perform as described on this datasheet, we will offer a refund or replacement. For full details of the Abpromise, please visit <https://www.abcam.co.jp/abpromise> or contact our technical team.

Terms and conditions

- Guarantee only valid for products bought direct from Abcam or one of our authorized distributors