

### Anti-KIF5B+KIF5C antibody [EPR10276(B)] ab167429

KO 評価済 リコンビナント RabMAb

★★★★☆ 3 Abreviews 37 References 画像数 11

#### 製品の概要

製品名	Anti-KIF5B+KIF5C antibody [EPR10276(B)]
製品の詳細	Rabbit monoclonal [EPR10276(B)] to KIF5C + KIF5B
由来種	Rabbit
特異性	The mouse and rat recommendation is based on the WB results. We do not guarantee IHC-P for mouse and rat.
アプリケーション	<b>適用あり:</b> Flow Cyt (Intra), WB, IHC-P, ICC/IF, IP
種交差性	<b>交差種:</b> Mouse, Rat, Human
免疫原	Synthetic peptide corresponding to Human KIF5B aa 1-100. Database link: <b>P33176</b>
ポジティブ・コントロール	Human fetal kidney, HeLa, Jurkat and HepG2 lysates; Human brain tissue; HeLa cells.
特記事項	This product is a recombinant monoclonal antibody, which offers several advantages including: <ul style="list-style-type: none"> <li>- High batch-to-batch consistency and reproducibility</li> <li>- Improved sensitivity and specificity</li> <li>- Long-term security of supply</li> <li>- Animal-free production</li> </ul> For more information <b><a href="#">see here</a></b> . Our RabMAb <sup>®</sup> technology is a patented hybridoma-based technology for making rabbit monoclonal antibodies. For details on our patents, please refer to <b><a href="#">RabMAb<sup>®</sup> patents</a></b> .

#### 製品の特性

製品の状態	Liquid
保存方法	Shipped at 4°C. Store at +4°C short term (1-2 weeks). Upon delivery aliquot. Store at -20°C long term. Avoid freeze / thaw cycle.
バッファー	pH: 7.2 Preservative: 0.01% Sodium azide Constituents: 40% Glycerol (glycerin, glycerine), 0.21% BSA, 59% PBS
精製度	Protein A purified
ポリ/モノ	モノクローナル

クローン名EPR10276(B)  
アイソタイプIgG

アプリケーション

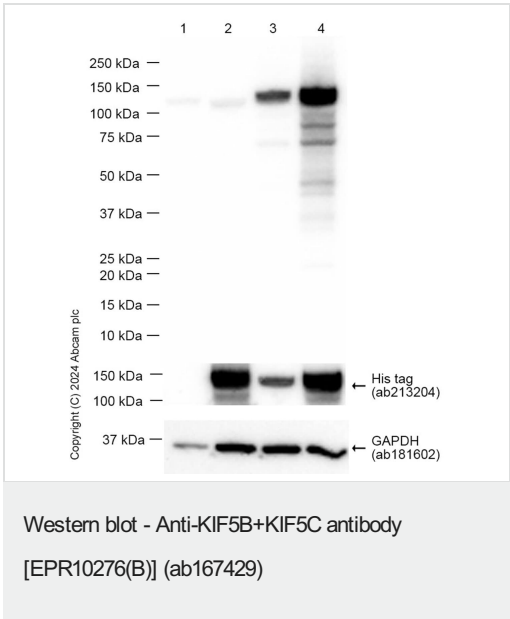
**The Abpromise guarantee**      **Abpromise保証は、** 次のテスト済みアプリケーションにおけるab167429の使用に適用されます  
アプリケーションノートには、推奨の開始希釈率がありますが、適切な希釈率につきましてはご検討ください。

アプリケーション	Abreviews	特記事項
Flow Cyt (Intra)		Use at an assay dependent concentration.
WB	★★★★★ (2)	1/1000 - 1/10000. Predicted molecular weight: 110 kDa.
IHC-P		1/100 - 1/250. Perform heat mediated antigen retrieval with citrate buffer pH 6 before commencing with IHC staining protocol. The mouse and rat recommendation is based on the WB results. We do not guarantee IHC-P for mouse and rat.
ICC/IF		1/100 - 1/500.
IP		1/10 - 1/100.

ターゲット情報

**細胞内局在**      KIF5C: Cytoplasm > cytoskeleton. KIF5B: Cytoplasm, cytoskeleton. Uniformly distributed between soma and neurites in hippocampal neurons.

画像



**All lanes :** Anti-KIF5B+KIF5C antibody [EPR10276(B)]  
(ab167429) at 1/1000 dilution

**Lane 1 :** 293T (Human embryonic kidney epithelial cell) +OE-empty  
**Lane 2 :** 293T (Human embryonic kidney epithelial cell) +OE-mouse KIF5A  
**Lane 3 :** 293T (Human embryonic kidney epithelial cell) +OE-mouse KIF5C  
**Lane 4 :** 293T (Human embryonic kidney epithelial cell) +OE-mouse KIF5B

Lysates/proteins at 20 µg per lane.

**Secondary**  
**All lanes :** Goat Anti-Rabbit IgG H&L (HRP) (**ab97051**) at 1/20000

dilution

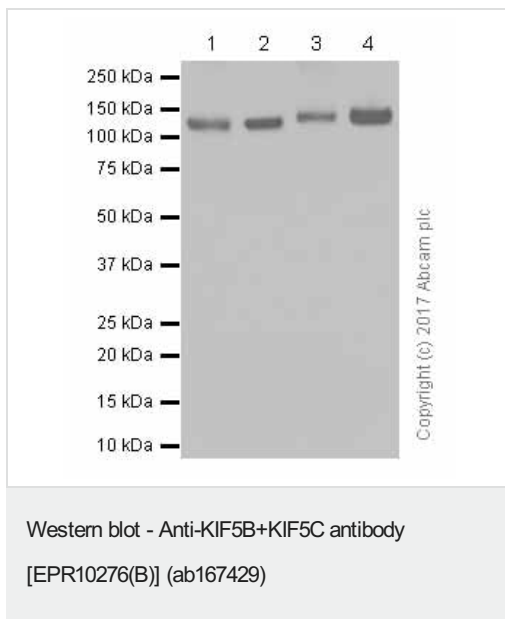
**Predicted band size:** 110 kDa

**Observed band size:** 110 kDa

**Exposure time:** 1 second

Blocking and diluting buffer and concentration: 5% NFDM/TBST

**ab181602** was used a GAPDH loading control.



**All lanes :** Anti-KIF5B+KIF5C antibody [EPR10276(B)]  
(ab167429) at 1/5000 dilution (purified)

**Lane 1 :** Jurkat (human acute T cell leukemia) whole cell lysates

**Lane 2 :** HeLa (Human cervix adenocarcinoma epithelial cell )  
whole cell lysates

**Lane 3 :** Mouse brain lysates

**Lane 4 :** Rat brain lysates

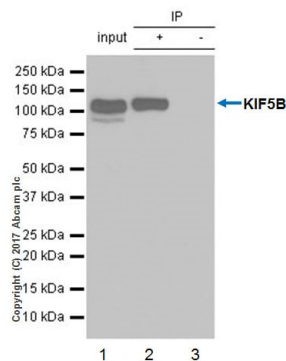
Lysates/proteins at 20 µg per lane.

### Secondary

**All lanes :** Goat Anti-Rabbit IgG H&L (HRP) (**ab97051**) at 1/20000  
dilution

**Predicted band size:** 110 kDa

Blocking and diluting buffer: 5% NFDM/TBST



Immunoprecipitation - Anti-KIF5B+KIF5C antibody  
[EPR10276(B)] (ab167429)

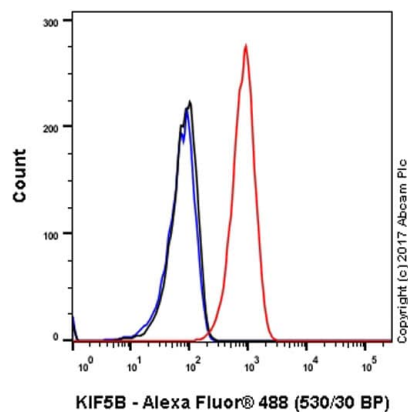
ab167429 (purified) at 1:20 dilution (2µg) immunoprecipitating KIF5B in HeLa (Human cervix adenocarcinoma epithelial cell) whole cell lysate.

**Lane 1 (input):** HeLa (Human cervix adenocarcinoma epithelial cell) whole cell lysate 10µg

**Lane 2 (+):** ab167429 & HeLa (Human cervix adenocarcinoma epithelial cell) whole cell lysate

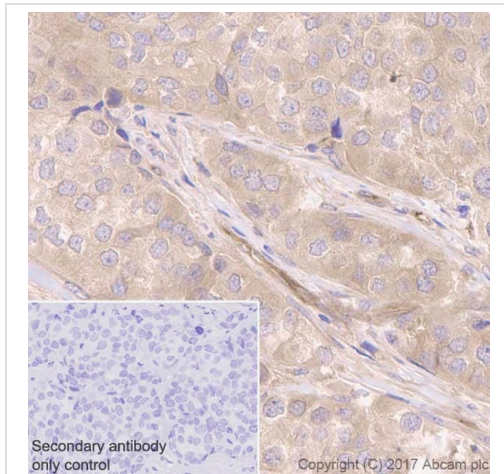
**Lane 3 (-):** Rabbit monoclonal IgG (**ab172730**) instead of ab167429 in HeLa (Human cervix adenocarcinoma epithelial cell) whole cell lysate

For western blotting, VeriBlot for IP Detection Reagent (HRP) (**ab131366**) was used for detection at 1:1000 dilution. Blocking and diluting buffer: 5% NFDM/TBST.



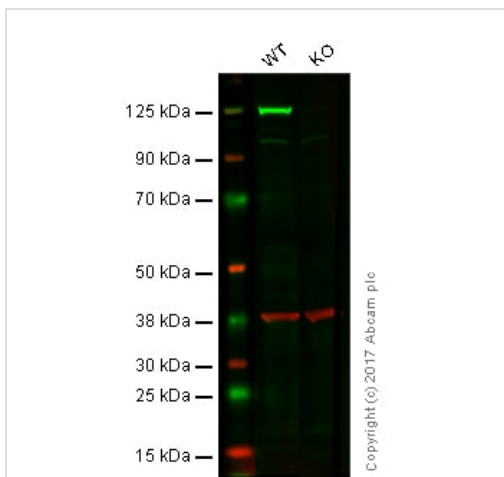
Flow Cytometry (Intracellular) - Anti-KIF5B+KIF5C  
antibody [EPR10276(B)] (ab167429)

Intracellular Flow Cytometry analysis of HepG2 (Human hepatocellular carcinoma epithelial cell) cells labeling KIF5B with purified ab167429 at 1/20 dilution (10µg/ml) (red). Cells were fixed with 4% Paraformaldehyde and permeabilised with 90% methanol. A Goat anti rabbit IgG (Alexa Fluor® 488) secondary antibody was used at 1/2000 dilution. Isotype control - Rabbit monoclonal IgG (Black). Unlabeled control - Cell without incubation with primary antibody and secondary antibody (Blue).



Immunohistochemistry (Formalin/PFA-fixed paraffin-embedded sections) - Anti-KIF5B+KIF5C antibody [EPR10276(B)] (ab167429)

Immunohistochemistry (Formalin/PFA-fixed paraffin-embedded sections) analysis of Human breast carcinoma tissue sections labeling KIF5B with Purified ab167429 at 1:250 dilution (0.07 µg/ml). Heat mediated antigen retrieval was performed using **ab93684** (Tris/EDTA buffer, pH 9.0). Tissue was counterstained with Hematoxylin. ImmunoHistoProbe one step HRP Polymer (ready to use) secondary antibody was used at 1:0 dilution. PBS instead of the primary antibody was used as the negative control.



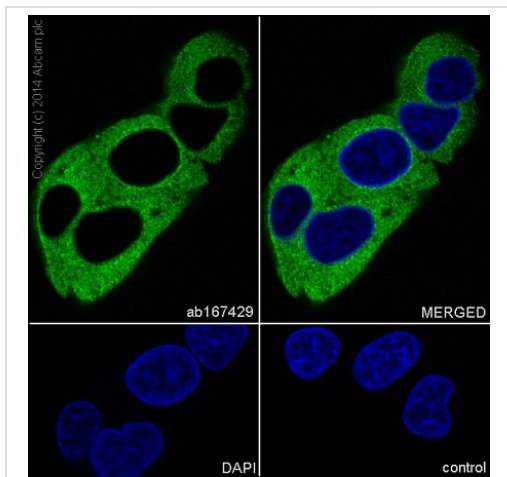
Western blot - Anti-KIF5B+KIF5C antibody [EPR10276(B)] (ab167429)

**Lane 1:** Wild-type HAP1 whole cell lysate (20 µg)

**Lane 2:** KIF5B knockout HAP1 whole cell lysate (20 µg)

**Lanes 1 - 2:** Merged signal (red and green). Green - ab167429 observed at 110 kDa. Red - loading control, **ab9484**, observed at 37 kDa.

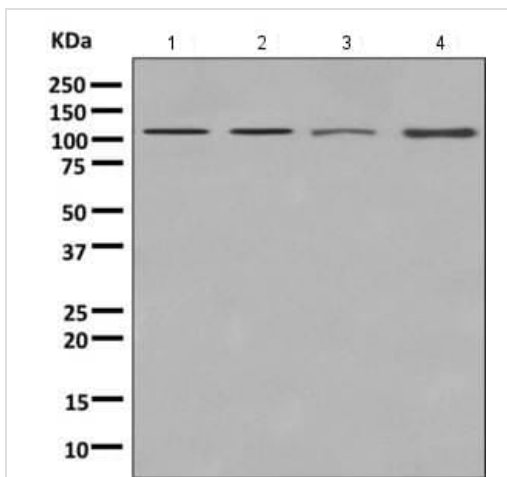
Unpurified ab167429 was shown to specifically react with KIF5B in wild-type cells as signal was lost in KIF5B knockout cells. Wild-type and KIF5B knockout samples were subjected to SDS-PAGE. Ab167429 and **ab9484** (Mouse anti-GAPDH loading control) were incubated overnight at 4°C at 1/1000 dilution and 1/20000 dilution respectively. Blots were developed with Goat anti-Rabbit IgG H&L (IRDye® 800CW) preabsorbed **ab216773** and Goat anti-Mouse IgG H&L (IRDye® 680RD) preabsorbed **ab216776** secondary antibodies at 1/20000 dilution for 1 hour at room temperature before imaging.



Immunocytochemistry/ Immunofluorescence - Anti-KIF5B+KIF5C antibody [EPR10276(B)] (ab167429)

Immunocytochemistry/Immunofluorescence analysis HepG2(human hepatocellular carcinoma) labelling KIF5B with purified ab167429 at 1/500. Cells were fixed with 4% PFA and permeabilized with 0.1% Triton X-100. An Alexa Fluor® 488-conjugated goat anti-rabbit IgG (1/1000) was used as the secondary antibody (Ab150077). Nuclei counterstained with DAPI (blue).

Control: PBS only



Western blot - Anti-KIF5B+KIF5C antibody [EPR10276(B)] (ab167429)

**All lanes :** Anti-KIF5B+KIF5C antibody [EPR10276(B)] (ab167429) at 1/1000 dilution (unpurified)

**Lane 1 :** Human fetal kidney lysate

**Lane 2 :** HeLa lysate

**Lane 3 :** Jurkat lysate

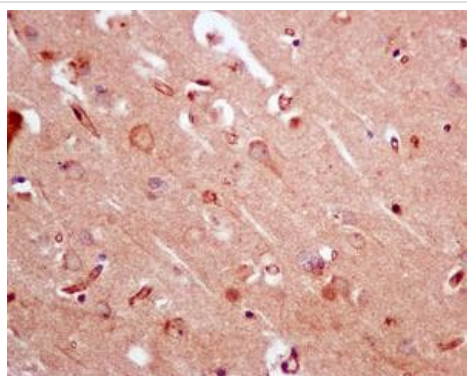
**Lane 4 :** HepG2 lysate

Lysates/proteins at 10 µg per lane.

#### Secondary

**All lanes :** Goat anti-rabbit HRP at 1/2000 dilution

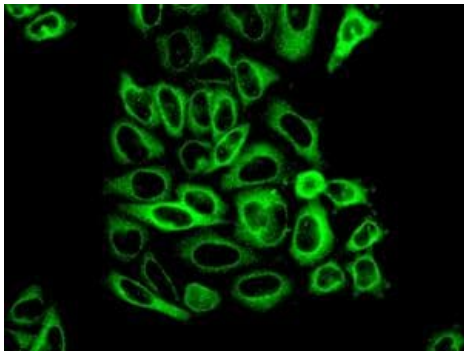
**Predicted band size:** 110 kDa



Immunohistochemistry (Formalin/PFA-fixed paraffin-embedded sections) - Anti-KIF5B+KIF5C antibody [EPR10276(B)] (ab167429)

Immunohistochemical analysis of formalin-fixed, paraffin-embedded Human brain tissue, labeling KIF5B using unpurified ab167429 at a 1/100 dilution.

Perform heat mediated antigen retrieval with citrate buffer pH 6 before commencing with IHC staining protocol.



Immunofluorescence analysis of HeLa cells, labeling KIF5B using unpurified ab167429 at a 1/100 dilution.

Immunocytochemistry/ Immunofluorescence - Anti-KIF5B+KIF5C antibody [EPR10276(B)] (ab167429)

Why choose a recombinant antibody?



**Research with confidence**  
Consistent and reproducible results



**Long-term and scalable supply**  
Recombinant technology



**Success from the first experiment**  
Confirmed specificity



**Ethical standards compliant**  
Animal-free production

Anti-KIF5B+KIF5C antibody [EPR10276(B)]  
(ab167429)

**Please note:** All products are "FOR RESEARCH USE ONLY. NOT FOR USE IN DIAGNOSTIC PROCEDURES"

### Our Abpromise to you: Quality guaranteed and expert technical support

- Replacement or refund for products not performing as stated on the datasheet
- Valid for 12 months from date of delivery
- Response to your inquiry within 24 hours
- We provide support in Chinese, English, French, German, Japanese and Spanish
- Extensive multi-media technical resources to help you
- We investigate all quality concerns to ensure our products perform to the highest standards

If the product does not perform as described on this datasheet, we will offer a refund or replacement. For full details of the Abpromise, please visit <https://www.abcam.co.jp/abpromise> or contact our technical team.

### Terms and conditions

- Guarantee only valid for products bought direct from Abcam or one of our authorized distributors

