

Anti-KIF5B antibody ab5629

★★★★★ [2 Abreviews](#) [15 References](#) [画像数 3](#)

製品の概要

| | |
|----------|--|
| 製品名 | Anti-KIF5B antibody |
| 製品の詳細 | Rabbit polyclonal to KIF5B |
| 由来種 | Rabbit |
| 特異性 | This antibody is specific for KIF5B and does not detect other kinesin isoforms. |
| アプリケーション | 適用あり: ICC/IF, WB |
| 種交差性 | 交差種: Mouse, Rat, Human |
| 免疫原 | Synthetic peptide corresponding to Human KIF5B aa 376-396. Sequence: IDEQFDKEKANLEAFTVDKDI Database link: P33176 (Peptide available as ab41782) |

 [Run BLAST with](#)

 [Run BLAST with](#)

特記事項

The Life Science industry has been in the grips of a reproducibility crisis for a number of years. Abcam is leading the way in addressing this with our range of recombinant monoclonal antibodies and knockout edited cell lines for gold-standard validation. Please check that this product meets your needs before purchasing.

If you have any questions, special requirements or concerns, please send us an inquiry and/or contact our Support team ahead of purchase. Recommended alternatives for this product can be found below, along with publications, customer reviews and Q&As

製品の特性

| | |
|--------|--|
| 製品の状態 | Liquid |
| 保存方法 | Shipped at 4°C. Store at +4°C short term (1-2 weeks). Upon delivery aliquot. Store at -20°C or -80°C. Avoid freeze / thaw cycle. |
| バッファー | Preservative: 0.05% Sodium azide Constituents: 0.1% BSA, 99% PBS |
| 精製度 | Immunogen affinity purified |
| ポリ/モノ | ポリクローナル |
| アイソタイプ | IgG |

アプリケーション

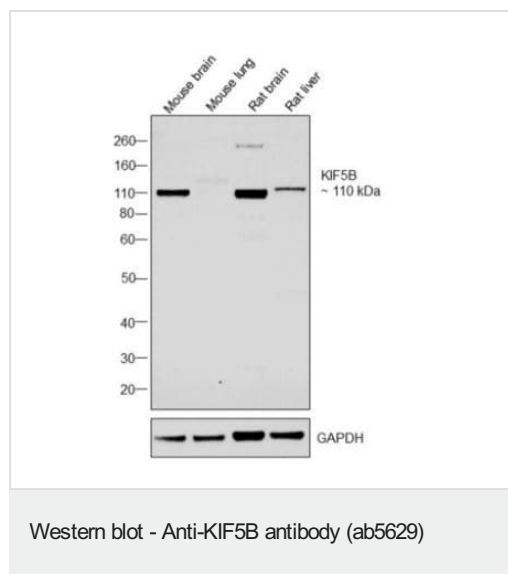
The Abpromise guarantee **Abpromise保証は、**次のテスト済みアプリケーションにおけるab5629の使用に適用されます
アプリケーションノートには、推奨の開始希釈率がありますが、適切な希釈率につきましてはご確認ください。

| アプリケーション | Abreviews | 特記事項 |
|----------|-----------|--|
| ICC/IF | ★★★★★ (1) | 1/250. |
| WB | | 1/2000 - 1/6000. Predicted molecular weight: 110 kDa. Can be blocked with Human KIF5B peptide (ab41782) . |

ターゲット情報

| | |
|-------|--|
| 機能 | Microtubule-dependent motor required for normal distribution of mitochondria and lysosomes. |
| 配列類似性 | Belongs to the TRAFAC class myosin-kinesin ATPase superfamily. Kinesin family. Kinesin subfamily. Contains 1 kinesin motor domain. |
| ドメイン | Composed of three structural domains: a large globular N-terminal domain which is responsible for the motor activity of kinesin (it hydrolyzes ATP and binds microtubule), a central alpha-helical coiled coil domain that mediates the heavy chain dimerization; and a small globular C-terminal domain which interacts with other proteins (such as the kinesin light chains), vesicles and membranous organelles. |
| 細胞内局在 | Cytoplasm, cytoskeleton. Uniformly distributed between soma and neurites in hippocampal neurons. |

画像



All lanes : Anti-KIF5B antibody (ab5629) at 1/2000 dilution

Lane 1 : Mouse brain Whole cell extract

Lane 2 : Mouse lung Whole cell extract

Lane 3 : Rat brain Whole cell extract

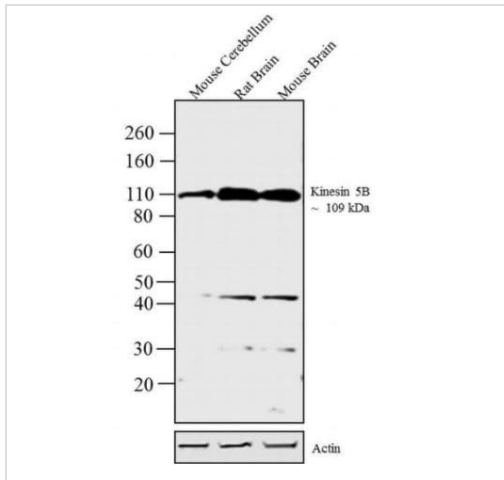
Lane 4 : Rat liver Whole cell extract

Lysates/proteins at 40 µg per lane.

Secondary

All lanes : Goat anti-Rabbit IgG (H+L),HRP at 1/4000 dilution

Predicted band size: 110 kDa



Western blot - Anti-KIF5B antibody (ab5629)

All lanes : Anti-KIF5B antibody (ab5629) at 1/4000 dilution

Lane 1 : Mouse Cerebellum whole cell extract

Lane 2 : Rat Brain whole cell extract

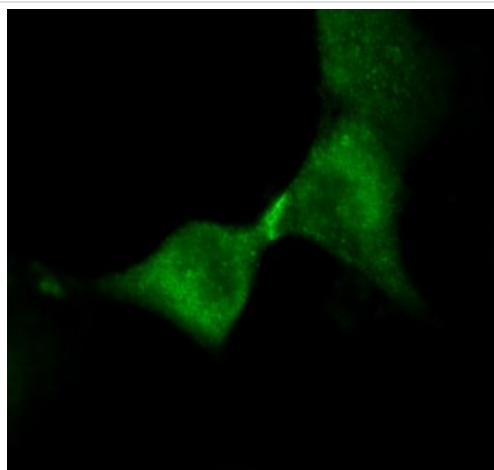
Lane 3 : Mouse Brain whole cell extract

Lysates/proteins at 30 µg per lane.

Secondary

All lanes : Goat anti-Rabbit IgG (H+L) HRP conjugate at 1/2500 dilution

Predicted band size: 110 kDa



Immunocytochemistry/ Immunofluorescence - Anti-KIF5B antibody (ab5629)

ab5629 labelling KIF5B (green) in HeLa cells. Cells fixed in 3.2% paraformaldehyde and permeabilized with 0.2% Triton X-100 for 30 minutes at 37°C were blocked with 3% BSA in PBS for 30 minutes at room temperature. Cells were incubated with the primary antibody (1:250) overnight at 4°C. A fluorescently-conjugated Goat anti-rabbit IgG was used as the secondary antibody (1:2000). Images were taken on wide-field fluorescent microscope at 63X magnification.

Please note: All products are "FOR RESEARCH USE ONLY. NOT FOR USE IN DIAGNOSTIC PROCEDURES"

Our Abpromise to you: Quality guaranteed and expert technical support

- Replacement or refund for products not performing as stated on the datasheet
- Valid for 12 months from date of delivery
- Response to your inquiry within 24 hours
- We provide support in Chinese, English, French, German, Japanese and Spanish
- Extensive multi-media technical resources to help you
- We investigate all quality concerns to ensure our products perform to the highest standards

If the product does not perform as described on this datasheet, we will offer a refund or replacement. For full details of the Abpromise, please visit <https://www.abcam.co.jp/abpromise> or contact our technical team.

Terms and conditions

- Guarantee only valid for products bought direct from Abcam or one of our authorized distributors