

### Anti-KIF5B antibody ab25715

★★★★★ [2 Abreviews](#) [4 References](#) [画像数 1](#)

#### 製品の概要

製品名	Anti-KIF5B antibody
製品の詳細	Rabbit polyclonal to KIF5B
由来種	Rabbit
特異性	This antibody detects total level of endogenous kinesin protein.
アプリケーション	<b>適用あり:</b> WB
種交差性	<b>交差種:</b> Human, Pig
免疫原	Recombinant fragment corresponding to Human KIF5B. Stalk domain of human KIF5B (amino acids 331-906) expressed in E. coli (FKHC3).
特記事項	<p>The Life Science industry has been in the grips of a reproducibility crisis for a number of years. Abcam is leading the way in addressing this with our range of recombinant monoclonal antibodies and knockout edited cell lines for gold-standard validation. Please check that this product meets your needs before purchasing.</p> <p>If you have any questions, special requirements or concerns, please send us an inquiry and/or contact our Support team ahead of purchase. Recommended alternatives for this product can be found below, along with publications, customer reviews and Q&amp;As</p>

#### 製品の特性

製品の状態	Liquid
保存方法	Shipped at 4°C. Store at +4°C short term (1-2 weeks). Upon delivery aliquot. Store at -20°C long term.
バッファー	pH: 7.40 Preservative: 0.097% Sodium azide
精製度	Protein A purified
特記事項(精製)	Purified from rabbit serum by affinity chromatography. > 95% pure (by SDS PAGE).
ポリ/モノ	ポリクローナル
アイソタイプ	IgG

#### アプリケーション

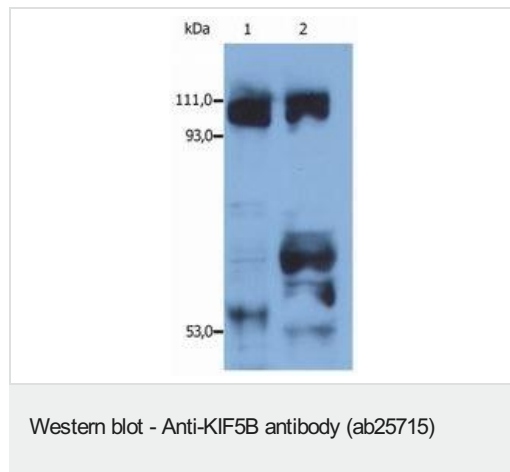
**The Abpromise guarantee**      Abpromise保証は、 次のテスト済みアプリケーションにおけるab25715の使用に適用されます  
 アプリケーションノートには、推奨の開始希釈率がありますが、適切な希釈率につきましてはご検討ください。

アプリケーション	Abreviews	特記事項
WB	★★★★★ (1)	1/1000. Predicted molecular weight: 110 kDa.

## ターゲット情報

<b>機能</b>	Microtubule-dependent motor required for normal distribution of mitochondria and lysosomes.
<b>配列類似性</b>	Belongs to the TRAFAC class myosin-kinesin ATPase superfamily. Kinesin family. Kinesin subfamily. Contains 1 kinesin motor domain.
<b>ドメイン</b>	Composed of three structural domains: a large globular N-terminal domain which is responsible for the motor activity of kinesin (it hydrolyzes ATP and binds microtubule), a central alpha-helical coiled coil domain that mediates the heavy chain dimerization; and a small globular C-terminal domain which interacts with other proteins (such as the kinesin light chains), vesicles and membranous organelles.
<b>細胞内局在</b>	Cytoplasm, cytoskeleton. Uniformly distributed between soma and neurites in hippocampal neurons.

## 画像



**All lanes :** Anti-KIF5B antibody (ab25715)

**Lane 1 :** Human HEK cell line

**Lane 2 :** Porcine brain

**Predicted band size:** 110 kDa

**Please note:** All products are "FOR RESEARCH USE ONLY. NOT FOR USE IN DIAGNOSTIC PROCEDURES"

## Our Abpromise to you: Quality guaranteed and expert technical support

- Replacement or refund for products not performing as stated on the datasheet
- Valid for 12 months from date of delivery
- Response to your inquiry within 24 hours
- We provide support in Chinese, English, French, German, Japanese and Spanish

- Extensive multi-media technical resources to help you
- We investigate all quality concerns to ensure our products perform to the highest standards

If the product does not perform as described on this datasheet, we will offer a refund or replacement. For full details of the Abpromise, please visit <https://www.abcam.co.jp/abpromise> or contact our technical team.

#### **Terms and conditions**

---

- Guarantee only valid for products bought direct from Abcam or one of our authorized distributors