

Anti-KIF5A + KIF5B + KIF5C antibody ab62104

★★★★★ [4 Abreviews](#) [5 References](#) [画像数 3](#)

製品の概要

製品名	Anti-KIF5A + KIF5B + KIF5C antibody
製品の詳細	Rabbit polyclonal to KIF5A + KIF5B + KIF5C
由来種	Rabbit
アプリケーション	適用あり: IHC-P, ICC/IF, IHC-Fr, IP, WB
種交差性	交差種: Mouse, Rat, Human
免疫原	Synthetic peptide corresponding to Human KIF5A + KIF5B + KIF5C (C terminal). Database link: Q12840
特記事項	<p>The Life Science industry has been in the grips of a reproducibility crisis for a number of years. Abcam is leading the way in addressing this with our range of recombinant monoclonal antibodies and knockout edited cell lines for gold-standard validation. Please check that this product meets your needs before purchasing.</p> <p>If you have any questions, special requirements or concerns, please send us an inquiry and/or contact our Support team ahead of purchase. Recommended alternatives for this product can be found below, along with publications, customer reviews and Q&As</p>

製品の特性

製品の状態	Liquid
保存方法	Shipped at 4°C. Store at +4°C short term (1-2 weeks). Upon delivery aliquot. Store at -20°C long term.
バッファー	pH: 7.2 Preservative: 0.02% Sodium azide Constituent: PBS
精製度	Immunogen affinity purified
ポリ/モノ	ポリクローナル
アイソタイプ	IgG

アプリケーション

The Abpromise guarantee

Abpromise保証は、次のテスト済みアプリケーションにおけるab62104の使用に適用されます

アプリケーションノートには、推奨の開始希釈率がありますが、適切な希釈率につきましてはご確認ください。

アプリケーション	Abreviews	特記事項
IHC-P		Use at an assay dependent concentration.
ICC/IF	★★★★☆ (1)	1/500.
IHC-Fr	★★★★★ (1)	Use at an assay dependent concentration.
IP	★★★★★ (1)	Use at an assay dependent concentration. See Abreview.
WB	★★★★★ (1)	Use a concentration of 0.5 - 1 µg/ml. Detects a band of approximately 116 kDa (predicted molecular weight: 110 kDa).

ターゲット情報

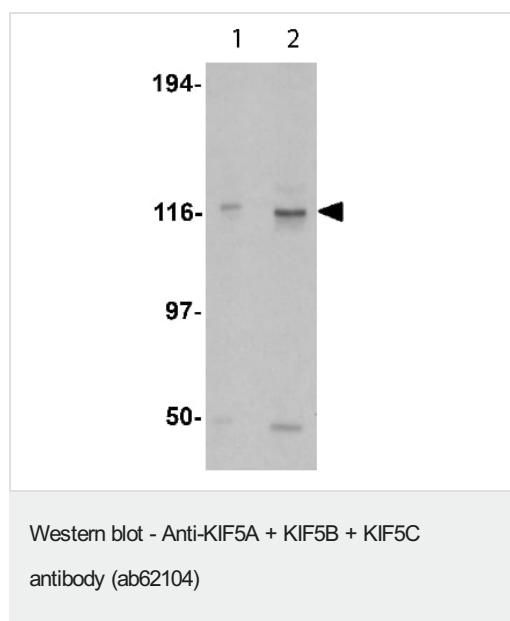
関連性

The kinesin superfamily proteins (KIFs) are microtubule-dependent motors that slide along microtubules and transport cellular organelles and mRNA to different parts of the cell. In neurons, KIF5 performs this role in an anterograde fashion from the neuronal cell body to axonal or dendritic terminals. KIF5 was initially differentiated from the ubiquitously expressed kinesin as being highly enriched in subsets of neurons and selectively concentrated in the cell body. KIF5 has at least three known isoforms; this antibody recognizes all three. Mutations in one of the isoforms of KIF5 (KIF5A) are thought to be involved in hereditary spastic paraplegias.

細胞内局在

Uniformly distributed between soma and neurites in hippocampal neurons

画像



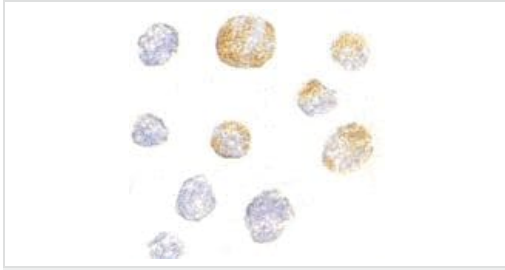
Lane 1 : Anti-KIF5A + KIF5B + KIF5C antibody (ab62104) at 0.5 µg/ml

Lane 2 : Anti-KIF5A + KIF5B + KIF5C antibody (ab62104) at 1 µg/ml

All lanes : K562 cell lysate

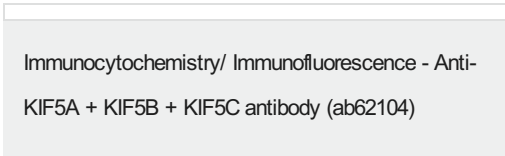
Predicted band size: 110 kDa

Observed band size: 116 kDa



Immunocytochemistry/ Immunofluorescence - Anti-KIF5A + KIF5B + KIF5C antibody (ab62104)

ab62104 at 5 µg/ml staining KIF5A + KIF5B + KIF5C in human K562 cells by Immunocytochemistry.



Immunocytochemistry/ Immunofluorescence - Anti-KIF5A + KIF5B + KIF5C antibody (ab62104)

Immunofluorescence of KIF5 in K562 cells using ab62104 at 20 µg/ml.

Please note: All products are "FOR RESEARCH USE ONLY. NOT FOR USE IN DIAGNOSTIC PROCEDURES"

Our Abpromise to you: Quality guaranteed and expert technical support

- Replacement or refund for products not performing as stated on the datasheet
- Valid for 12 months from date of delivery
- Response to your inquiry within 24 hours
- We provide support in Chinese, English, French, German, Japanese and Spanish
- Extensive multi-media technical resources to help you
- We investigate all quality concerns to ensure our products perform to the highest standards

If the product does not perform as described on this datasheet, we will offer a refund or replacement. For full details of the Abpromise, please visit <https://www.abcam.co.jp/abpromise> or contact our technical team.

Terms and conditions

- Guarantee only valid for products bought direct from Abcam or one of our authorized distributors