

### Anti-KIF22 antibody [EP2748] ab108535

KO 評価済 RabMAb

画像数 2

#### 製品の概要

製品名	Anti-KIF22 antibody [EP2748]
製品の詳細	Rabbit monoclonal [EP2748] to KIF22
由来種	Rabbit
アプリケーション	<b>適用あり:</b> WB <b>適用なし:</b> Flow Cyt, ICC/IF, IHC-P or IP
種交差性	<b>交差種:</b> Human
免疫原	Synthetic peptide. This information is proprietary to Abcam and/or its suppliers.
ポジティブ・コントロール	HEK-293T, HeLa, MCF7, and SH-SY5Y cell lysates
特記事項	<p>Our RabMAb<sup>®</sup> technology is a patented hybridoma-based technology for making rabbit monoclonal antibodies. For details on our patents, please refer to <a href="#">RabMAb<sup>®</sup> patents</a>.</p> <p>The Life Science industry has been in the grips of a reproducibility crisis for a number of years. Abcam is leading the way in addressing this with our range of recombinant monoclonal antibodies and knockout edited cell lines for gold-standard validation. Please check that this product meets your needs before purchasing.</p> <p>If you have any questions, special requirements or concerns, please send us an inquiry and/or contact our Support team ahead of purchase. Recommended alternatives for this product can be found below, along with publications, customer reviews and Q&amp;As</p> <p>Mouse, Rat: We have preliminary internal testing data to indicate this antibody may not react with these species. Please contact us for more information.</p>

#### 製品の特性

製品の状態	Liquid
保存方法	Shipped at 4°C. Store at -20°C.
バッファー	pH: 7.20 Preservative: 0.05% Sodium azide Constituents: 0.1% BSA, 40% Glycerol (glycerin, glycerine), 9.85% Tris glycine, 50% Tissue culture supernatant
精製度	Tissue culture supernatant

ポリ/モノ	モノクローナル
クローン名	EP2748
アイソタイプ	IgG

アプリケーション

The Abpromise guarantee      **Abpromise保証は、**次のテスト済みアプリケーションにおけるab108535の使用に適用されます  
 アプリケーションノートには、推奨の開始希釈率がありますが、適切な希釈率につきましてはご確認ください。

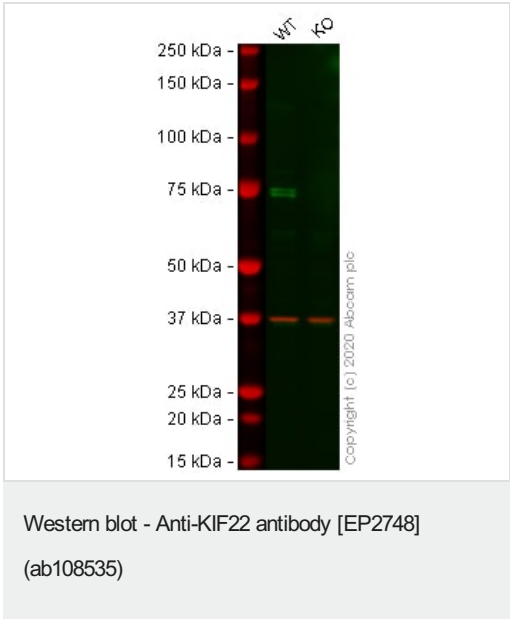
アプリケーション	Abreviews	特記事項
WB		1/1000 - 1/10000. Predicted molecular weight: 73 kDa.

追加情報      Is unsuitable for Flow Cyt,ICC/IF,IHC-P or IP.

ターゲット情報

機能	Kinesin family that is involved in spindle formation and the movements of chromosomes during mitosis and meiosis. Binds to microtubules and to DNA.
配列類似性	Belongs to the kinesin-like protein family. Contains 1 kinesin-motor domain.
翻訳後修飾	Ubiquitinated; mediated by SIAH1 and leading to its subsequent proteasomal degradation. Phosphorylated upon DNA damage, probably by ATM or ATR.
細胞内局在	Nucleus. Cytoplasm > cytoskeleton.

画像



**All lanes :** Anti-KIF22 antibody [EP2748] (ab108535) at 1/1000 dilution

**Lane 1 :** Wild-type HEK-293T (Human epithelial cell line from embryonic kidney transformed with large T antigen) whole cell lysate  
**Lane 2 :** KIF22 knockout HEK-293T cell lysate

Lysates/proteins at 20 µg per lane.

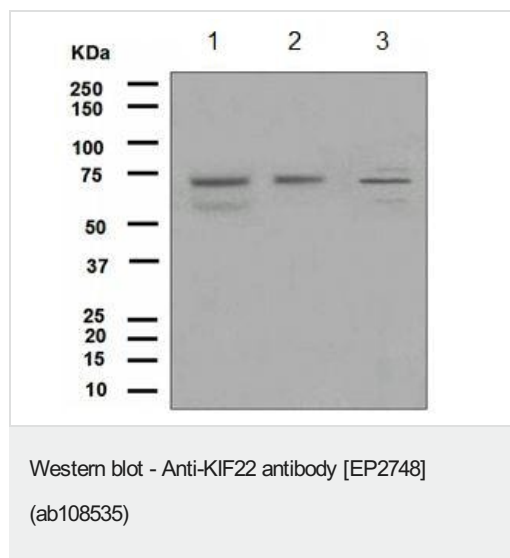
Performed under reducing conditions.

**Predicted band size:** 73 kDa  
**Observed band size:** 75 kDa

**Lanes 1 - 2:** Merged signal (red and green). Green - ab108535

observed at 75 kDa. Red - loading control **ab8245** (Mouse anti-GAPDH antibody [6C5]) observed at 37kDa.

ab108535 was shown to react with KIF22 in HEK-293T wild-type cells in western blot with loss of signal observed in KIF22 knockout cell line **ab266817** (KIF22 knockout cell lysate **ab258018**). Wild-type and KIF22 knockout HEK-293T cell lysates were subjected to SDS-PAGE. Membranes were blocked in 3% milk in TBS-T (0.1% Tween®) before incubation with ab108535 and **ab8245** (Mouse anti-GAPDH antibody [6C5]) overnight at 4°C at a 1 in 1000 dilution and a 1 in 20000 dilution respectively. Blots were incubated with Goat anti-Rabbit IgG H&L (IRDye® 800CW) preabsorbed (**ab216773**) and Goat anti-Mouse IgG H&L (IRDye® 680RD) preabsorbed (**ab216776**) secondary antibodies at 1 in 20000 dilution for 1 hour at room temperature before imaging.



**All lanes** : Anti-KIF22 antibody [EP2748] (ab108535) at 1/1000 dilution

**Lane 1** : HeLa cell lysate

**Lane 2** : MCF7 cell lysate

**Lane 3** : SH-SY5Y cell lysate

Lysates/proteins at 10 µg per lane.

#### Secondary

**All lanes** : HRP-labelled goat anti-rabbit at 1/2000 dilution

**Predicted band size:** 73 kDa

**Please note:** All products are "FOR RESEARCH USE ONLY. NOT FOR USE IN DIAGNOSTIC PROCEDURES"

#### Our Abpromise to you: Quality guaranteed and expert technical support

- Replacement or refund for products not performing as stated on the datasheet
- Valid for 12 months from date of delivery
- Response to your inquiry within 24 hours
- We provide support in Chinese, English, French, German, Japanese and Spanish
- Extensive multi-media technical resources to help you
- We investigate all quality concerns to ensure our products perform to the highest standards

If the product does not perform as described on this datasheet, we will offer a refund or replacement. For full details of the Abpromise, please visit <https://www.abcam.co.jp/abpromise> or contact our technical team.

## Terms and conditions

---

- Guarantee only valid for products bought direct from Abcam or one of our authorized distributors