

Anti-KIF20A antibody ab70791

3 References [画像数 2](#)

製品の概要

製品名	Anti-KIF20A antibody
製品の詳細	Rabbit polyclonal to KIF20A
由来種	Rabbit
アプリケーション	適用あり: WB, IP
種交差性	交差種: Human 交差が予測される動物種: Rabbit, Horse, Cow, Dog, Pig, Chimpanzee, Rhesus monkey, Gorilla, Orangutan 
免疫原	Synthetic peptide corresponding to a region between residue 840 and the C-terminus (residue 890) of human KIF20A. (NP_005724.1)
特記事項	<p>The Life Science industry has been in the grips of a reproducibility crisis for a number of years. Abcam is leading the way in addressing this with our range of recombinant monoclonal antibodies and knockout edited cell lines for gold-standard validation. Please check that this product meets your needs before purchasing.</p> <p>If you have any questions, special requirements or concerns, please send us an inquiry and/or contact our Support team ahead of purchase. Recommended alternatives for this product can be found below, along with publications, customer reviews and Q&As</p>

製品の特性

製品の状態	Liquid
保存方法	Shipped at 4°C. Upon delivery aliquot and store at -20°C. Avoid freeze / thaw cycles.
バッファー	pH: 7 Preservative: 0.09% Sodium azide Constituents: 1.815% Tris, 1.764% Sodium citrate, 0.021% PBS
精製度	Immunogen affinity purified
ポリ/モノ	ポリクローナル
アイソタイプ	IgG

アプリケーション

The Abpromise guarantee

Abpromise保証は、次のテスト済みアプリケーションにおけるab70791の使用に適用されます

アプリケーションノートには、推奨の開始希釈率がありますが、適切な希釈率につきましてはご検討ください。

アプリケーション	Abreviews	特記事項
WB		1/2000 - 1/10000. Detects a band of approximately 100 kDa (predicted molecular weight: 100 kDa).
IP		Use at 2-5 µg/mg of lysate.

ターゲット情報

機能

Mitotic kinesin required for chromosome passenger complex (CPC)-mediated cytokinesis. Following phosphorylation by PLK1, involved in recruitment of PLK1 to the central spindle. Interacts with guanosine triphosphate (GTP)-bound forms of RAB6A and RAB6B. May act as a motor required for the retrograde RAB6 regulated transport of Golgi membranes and associated vesicles along microtubules. Has a microtubule plus end-directed motility.

配列類似性

Belongs to the kinesin-like protein family.
Contains 1 kinesin-motor domain.

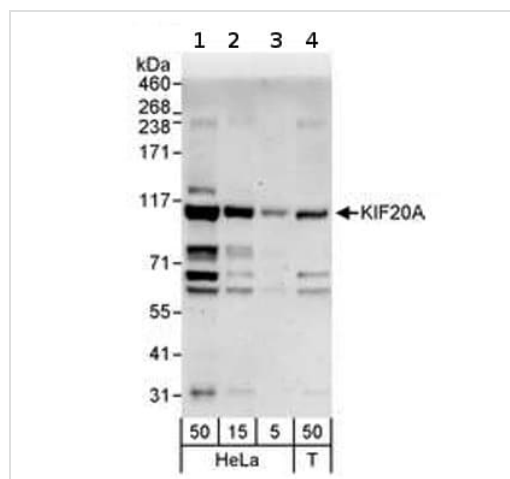
翻訳後修飾

Phosphorylated by PLK1 at Ser-528 during mitosis, creating a docking site for PLK1 and recruiting PLK1 at central spindle.

細胞内局在

Golgi apparatus. Cytoplasm > cytoskeleton > spindle.

画像



Western blot - Anti-KIF20A antibody (ab70791)

All lanes : Anti-KIF20A antibody (ab70791) at 0.1 µg/ml

Lane 1 : HeLa whole cell lysate at 50 µg

Lane 2 : HeLa whole cell lysate at 15 µg

Lane 3 : HeLa whole cell lysate at 5 µg

Lane 4 : 293T whole cell lysate at 50 µg

Developed using the ECL technique.

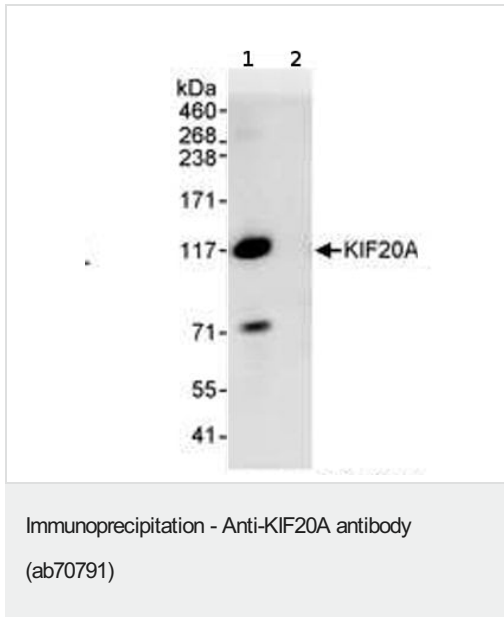
Predicted band size: 100 kDa

Observed band size: 100 kDa

Additional bands at: 120 kDa, 31 kDa, 60 kDa, 68 kDa, 73 kDa.

We are unsure as to the identity of these extra bands.

Exposure time: 3 minutes



HeLa whole cell lysate (1 mg for IP, 20% of IP loaded) with ab70791 at 1 µg/ml for WB, subsequent to using for IP at 3 µg/mg lysate.

Lane 2: IgG control.

Detection: Chemiluminescence with an exposure time of 10 seconds.

Please note: All products are "FOR RESEARCH USE ONLY. NOT FOR USE IN DIAGNOSTIC PROCEDURES"

Our Abpromise to you: Quality guaranteed and expert technical support

- Replacement or refund for products not performing as stated on the datasheet
- Valid for 12 months from date of delivery
- Response to your inquiry within 24 hours
- We provide support in Chinese, English, French, German, Japanese and Spanish
- Extensive multi-media technical resources to help you
- We investigate all quality concerns to ensure our products perform to the highest standards

If the product does not perform as described on this datasheet, we will offer a refund or replacement. For full details of the Abpromise, please visit <https://www.abcam.co.jp/abpromise> or contact our technical team.

Terms and conditions

- Guarantee only valid for products bought direct from Abcam or one of our authorized distributors