

Anti-KIF1C antibody ab72238

2 References [画像数 2](#)

製品の概要

製品名	Anti-KIF1C antibody
製品の詳細	Rabbit polyclonal to KIF1C
由来種	Rabbit
アプリケーション	適用あり: WB, IP
種交差性	交差種: Human
免疫原	Synthetic peptide corresponding to Human KIF1C aa 850-950. Database link: O43896
ポジティブ・コントロール	WB: HeLa whole cell lysate. IP: HeLa whole cell lysate.
特記事項	<p>The Life Science industry has been in the grips of a reproducibility crisis for a number of years. Abcam is leading the way in addressing this with our range of recombinant monoclonal antibodies and knockout edited cell lines for gold-standard validation. Please check that this product meets your needs before purchasing.</p> <p>If you have any questions, special requirements or concerns, please send us an inquiry and/or contact our Support team ahead of purchase. Recommended alternatives for this product can be found below, along with publications, customer reviews and Q&As</p>

製品の特性

製品の状態	Liquid
保存方法	Shipped at 4°C. Upon delivery aliquot and store at -20°C. Avoid freeze / thaw cycles.
バッファー	pH: 6.8 Preservative: 0.09% Sodium azide Constituents: 0.1% BSA, Tris buffered saline
精製度	Immunogen affinity purified
ポリ/モノ	ポリクローナル
アイソタイプ	IgG

アプリケーション

The Abpromise guarantee

Abpromise保証は、次のテスト済みアプリケーションにおけるab72238の使用に適用されます

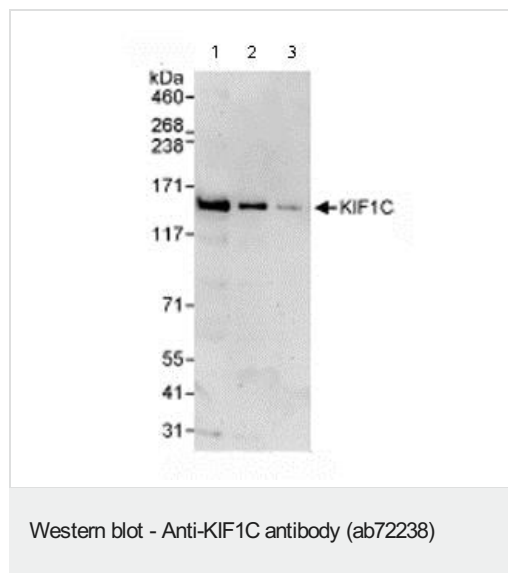
アプリケーションノートには、推奨の開始希釈率がありますが、適切な希釈率につきましてはご確認ください。

アプリケーション	Abreviews	特記事項
WB		1/2000 - 1/10000. Detects a band of approximately 160 kDa (predicted molecular weight: 123 kDa).
IP		Use at 2-5 µg/mg of lysate.

ターゲット情報

機能	Motor required for the retrograde transport of Golgi vesicles to the endoplasmic reticulum. Has a microtubule plus end-directed motility.
組織特異性	Expressed in all tissues examined, with most abundant expression in heart and skeletal muscle.
関連疾患	Spastic ataxia 2, autosomal recessive
配列類似性	Belongs to the TRAFAC class myosin-kinesin ATPase superfamily. Kinesin family. Unc-104 subfamily. Contains 1 FHA domain. Contains 1 kinesin motor domain.
翻訳後修飾	Phosphorylated on tyrosine residues.
細胞内局在	Cytoplasm, cytoskeleton.

画像



All lanes : Anti-KIF1C antibody (ab72238) at 0.04 µg/ml

Lane 1 : Whole cell lysate from HeLa cells at 50 µg

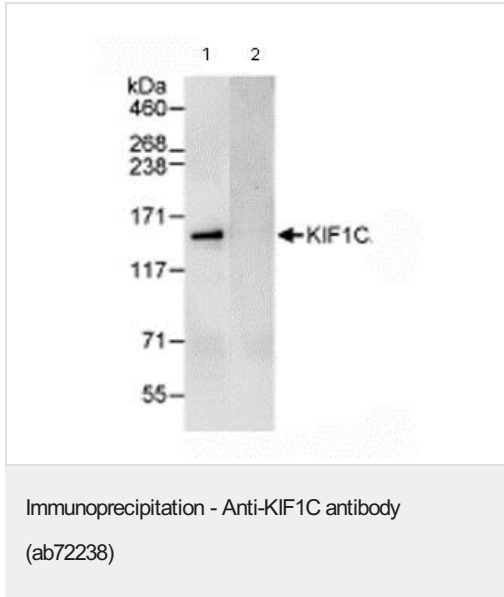
Lane 2 : Whole cell lysate from HeLa cells at 15 µg

Lane 3 : Whole cell lysate from HeLa cells at 5 µg

Predicted band size: 123 kDa

Observed band size: 160 kDa

Various other bands are detected from 31 kDa upwards.



Immunoprecipitation/ Western Blot of KIF1C.

Lane 1: ab72238 at 3 μ g/mg whole cell lysate.

Lane 2: Control IgG.

ab72238 at 1 μ g/ml for WB.

Whole cell lysate from Hela cells at 1mg for IP, 20% of IP loaded.

Chemiluminescence with an exposure time of 30 seconds.

Please note: All products are "FOR RESEARCH USE ONLY. NOT FOR USE IN DIAGNOSTIC PROCEDURES"

Our Abpromise to you: Quality guaranteed and expert technical support

- Replacement or refund for products not performing as stated on the datasheet
- Valid for 12 months from date of delivery
- Response to your inquiry within 24 hours
- We provide support in Chinese, English, French, German, Japanese and Spanish
- Extensive multi-media technical resources to help you
- We investigate all quality concerns to ensure our products perform to the highest standards

If the product does not perform as described on this datasheet, we will offer a refund or replacement. For full details of the Abpromise, please visit <https://www.abcam.co.jp/abpromise> or contact our technical team.

Terms and conditions

- Guarantee only valid for products bought direct from Abcam or one of our authorized distributors