

### Anti-KIF1A antibody ab91029

**2 References**   [画像数 3](#)

#### 製品の概要

製品名	Anti-KIF1A antibody
製品の詳細	Rabbit polyclonal to KIF1A
由来種	Rabbit
特異性	From Jan 2024, QC testing of replenishment batches of this polyclonal changed. All tested and expected application and reactive species combinations are still covered by our Abcam product promise. However, we no longer test all applications. For more information on a specific batch, please contact our Scientific Support who will be happy to help.
アプリケーション	<b>適用あり:</b> IHC-P, WB, ELISA
種交差性	<b>交差種:</b> Mouse, Human <b>交差が予測される動物種:</b> Dog 
免疫原	Synthetic peptide corresponding to Human KIF1A aa 1500-1600 conjugated to keyhole limpet haemocyanin. (Peptide available as <a href="#">ab108241</a> )
ポジティブ・コントロール	This antibody gave a positive signal in both Mouse brain embryonic E14 and Mouse brain embryonic E18 tissue lysates. As well as human hippocampus formalin fixed paraffin embedded tissue section within immunohistochemistry.
特記事項	<p>The Life Science industry has been in the grips of a reproducibility crisis for a number of years. Abcam is leading the way in addressing this with our range of recombinant monoclonal antibodies and knockout edited cell lines for gold-standard validation. Please check that this product meets your needs before purchasing.</p> <p>If you have any questions, special requirements or concerns, please send us an inquiry and/or contact our Support team ahead of purchase. Recommended alternatives for this product can be found below, along with publications, customer reviews and Q&amp;As</p>

#### 製品の特性

製品の状態	Liquid
保存方法	Shipped at 4°C. Store at +4°C short term (1-2 weeks). Upon delivery aliquot. Store at -20°C or -80°C. Avoid freeze / thaw cycle.
バッファー	pH: 7.40 Preservative: 0.02% Sodium azide

Constituent: PBS

Batches of this product that have a concentration < 1mg/ml may have BSA added as a stabilising agent. If you would like information about the formulation of a specific lot, please contact our scientific support team who will be happy to help.

**精製度** Immunogen affinity purified  
**ポリ/モノ** ポリクローナル  
**アイソタイプ** IgG

## アプリケーション

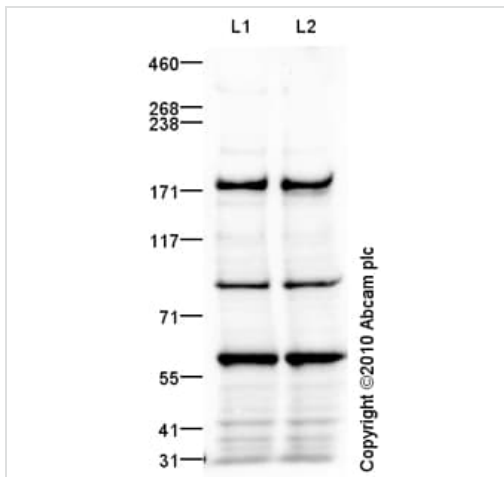
**The Abpromise guarantee** Abpromise保証は、次のテスト済みアプリケーションにおけるab91029の使用に適用されます  
アプリケーションノートには、推奨の開始希釈率がありますが、適切な希釈率につきましてはご検討ください。

アプリケーション	Abreviews	特記事項
IHC-P		Use a concentration of 5 µg/ml. Perform heat mediated antigen retrieval before commencing with IHC staining protocol.
WB		Use a concentration of 1 µg/ml. Detects a band of approximately 191 kDa (predicted molecular weight: 191 kDa).
ELISA		Use a concentration of 1 µg/ml.

## ターゲット情報

**機能** Motor for anterograde axonal transport of synaptic vesicle precursors.  
**配列類似性** Belongs to the kinesin-like protein family. Unc-104 subfamily.  
Contains 1 FHA domain.  
Contains 1 kinesin-motor domain.  
Contains 1 PH domain.  
**細胞内局在** Cytoplasm > cytoskeleton.

## 画像



Western blot - Anti-KIF1A antibody (ab91029)

**All lanes :** Anti-KIF1A antibody (ab91029) at 1 µg/ml

**Lane 1 :** E14 Mouse Embryo Brain Tissue Lysate

**Lane 2 :** E18 Ms Embryo Brain Tissue Lysate

Lysates/proteins at 10 µg per lane.

#### Secondary

**All lanes :** Goat Anti-Rabbit IgG H&L (HRP) preadsorbed (**ab97080**) at 1/5000 dilution

Developed using the ECL technique.

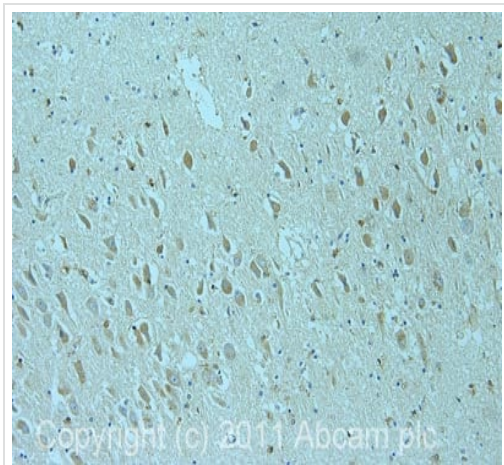
Performed under reducing conditions.

**Predicted band size:** 191 kDa

**Observed band size:** 191 kDa

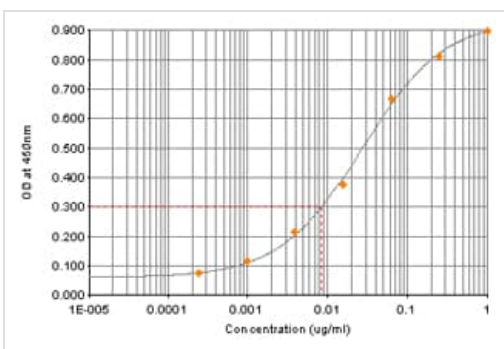
**Additional bands at:** 58 kDa, 95 kDa. We are unsure as to the identity of these extra bands.

**Exposure time:** 8 minutes



Immunohistochemistry (Formalin/PFA-fixed paraffin-embedded sections) - Anti-KIF1A antibody (ab91029)

IHC image of KIF1A staining in human hippocampus formalin fixed paraffin embedded tissue section, performed on a Leica Bond™ system using the standard protocol F. The section was pre-treated using heat mediated antigen retrieval with sodium citrate buffer (pH6, epitope retrieval solution 1) for 20 mins. The section was then incubated with ab91029, 5µg/ml, for 15 mins at room temperature and detected using an HRP conjugated compact polymer system. DAB was used as the chromogen. The section was then counterstained with haematoxylin and mounted with DPX.



ELISA - Anti-KIF1A antibody (ab91029)

ab91029 was tested using an Indirect ELISA approach. The wells were coated with peptide (1µg/ml at 100µl/well) overnight at 4°C, followed by a 1% BSA blocking step for 1 hour at room temperature. The primary Ab was then added at a dilution range of 1- 0.00025µg/ml (100µl/well) for 1hr at room temperature. A HRP-conjugated anti-rabbit IgG (heavy and light chain) was used as a secondary antibody at 1:20,000 dilution for 1hr at room temperature.

**Please note:** All products are "FOR RESEARCH USE ONLY. NOT FOR USE IN DIAGNOSTIC PROCEDURES"

### Our Abpromise to you: Quality guaranteed and expert technical support

- Replacement or refund for products not performing as stated on the datasheet
- Valid for 12 months from date of delivery
- Response to your inquiry within 24 hours
- We provide support in Chinese, English, French, German, Japanese and Spanish
- Extensive multi-media technical resources to help you
- We investigate all quality concerns to ensure our products perform to the highest standards

If the product does not perform as described on this datasheet, we will offer a refund or replacement. For full details of the Abpromise, please visit <https://www.abcam.co.jp/abpromise> or contact our technical team.

### Terms and conditions

- Guarantee only valid for products bought direct from Abcam or one of our authorized distributors