


Anti-KIF13A antibody ab72414

画像数 2

製品の概要

| | |
|--------------|---|
| 製品名 | Anti-KIF13A antibody |
| 製品の詳細 | Rabbit polyclonal to KIF13A |
| 由来種 | Rabbit |
| アプリケーション | 適用あり: WB, IP |
| 種交差性 | 交差種: Human 交差が予測される動物種: Horse, Chimpanzee, Rhesus monkey, Gorilla, Orangutan, Bat  |
| 免疫原 | Synthetic peptide corresponding to a region between residues 1675 and 1725 of human KIF13A (NP_071396.3) |
| ポジティブ・コントロール | HeLa whole cell lysate. |
| 特記事項 | <p>The Life Science industry has been in the grips of a reproducibility crisis for a number of years. Abcam is leading the way in addressing this with our range of recombinant monoclonal antibodies and knockout edited cell lines for gold-standard validation. Please check that this product meets your needs before purchasing.</p> <p>If you have any questions, special requirements or concerns, please send us an inquiry and/or contact our Support team ahead of purchase. Recommended alternatives for this product can be found below, along with publications, customer reviews and Q&As</p> |

製品の特性

| | |
|----------|---|
| 製品の状態 | Liquid |
| 保存方法 | Shipped at 4°C. Upon delivery aliquot and store at -20°C. Avoid freeze / thaw cycles. |
| バッファー | pH: 6.8 Preservative: 0.09% Sodium azide Constituents: 0.1% BSA, Tris buffered saline |
| 精製度 | Immunogen affinity purified |
| 特記事項(精製) | ab72414 was affinity purified using an epitope specific to KIF13A immobilized on solid support. |
| ポリ/モノ | ポリクローナル |
| アイソタイプ | IgG |

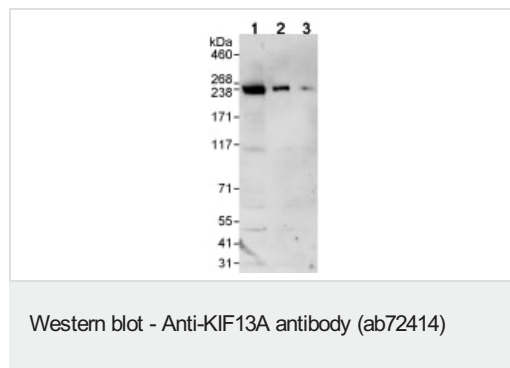
The Abpromise guarantee **Abpromise保証は、** 次のテスト済みアプリケーションにおけるab72414の使用に適用されます
アプリケーションノートには、推奨の開始希釈率がありますが、適切な希釈率につきましてはご確認ください。

| アプリケーション | Abreviews | 特記事項 |
|----------|-----------|--|
| WB | | 1/2000 - 1/10000. Detects a band of approximately 238 kDa (predicted molecular weight: 203 kDa). |
| IP | | Use at 2-5 µg/mg of lysate. |

ターゲット情報

| | |
|--------------|---|
| 機能 | Plus end-directed microtubule-dependent motor protein involved in intracellular transport and regulating various processes such as mannose-6-phosphate receptor (M6PR) transport to the plasma membrane, endosomal sorting during melanosome biogenesis and cytokinesis. Mediates the transport of M6PR-containing vesicles from trans-Golgi network to the plasma membrane via direct interaction with the AP-1 complex. During melanosome maturation, required for delivering melanogenic enzymes from recycling endosomes to nascent melanosomes by creating peripheral recycling endosomal subdomains in melanocytes. Also required for the abscission step in cytokinesis: mediates translocation of ZFYVE26, and possibly TTC19, to the midbody during cytokinesis. |
| 組織特異性 | Widely expressed, with highest levels in heart, brain and skeletal muscle. |
| 配列類似性 | Belongs to the kinesin-like protein family. Contains 1 FHA domain. Contains 1 kinesin-motor domain. |
| 発生段階 | Expressed at very low level in most fetal tissues, but at higher levels in skeletal muscle and lung. |
| 細胞内局在 | Cytoplasm > cytoskeleton > centrosome. Midbody. Endosome membrane. Golgi apparatus membrane. Recruited to the midbody during cytokinesis. |

画像



All lanes : Anti-KIF13A antibody (ab72414) at 0.04 µg/ml

Lane 1 : HeLa whole cell lysate at 50 µg

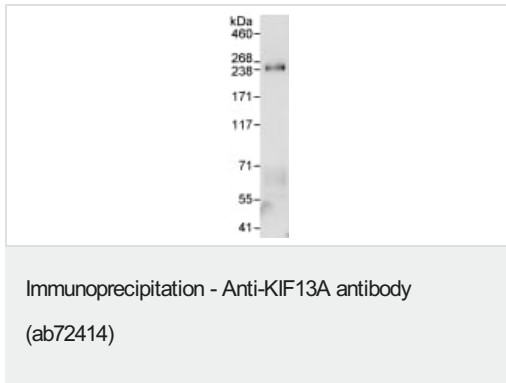
Lane 2 : HeLa whole cell lysate at 15 µg

Lane 3 : HeLa whole cell lysate at 5 µg

Predicted band size: 203 kDa

Observed band size: 238 kDa

Exposure time: 3 minutes



Detection of KIF13A by Western Blot of Immunoprecipitate.
ab72414, at 1 µg/ml, staining KIF13A in HeLa whole cell lysate
immunoprecipitated using ab72414 at 3 µg/mg lysate (1 mg/IP; 20%
of IP loaded/lane).
Detection: Chemiluminescence with exposure time of 30 seconds.

Please note: All products are "FOR RESEARCH USE ONLY. NOT FOR USE IN DIAGNOSTIC PROCEDURES"

Our Abpromise to you: Quality guaranteed and expert technical support

- Replacement or refund for products not performing as stated on the datasheet
- Valid for 12 months from date of delivery
- Response to your inquiry within 24 hours
- We provide support in Chinese, English, French, German, Japanese and Spanish
- Extensive multi-media technical resources to help you
- We investigate all quality concerns to ensure our products perform to the highest standards

If the product does not perform as described on this datasheet, we will offer a refund or replacement. For full details of the Abpromise, please visit <https://www.abcam.co.jp/abpromise> or contact our technical team.

Terms and conditions

- Guarantee only valid for products bought direct from Abcam or one of our authorized distributors