

Anti-KIAA0802 antibody ab100914

画像数 2

製品の概要

製品名	Anti-KIAA0802 antibody
製品の詳細	Rabbit polyclonal to KIAA0802
由来種	Rabbit
アプリケーション	適用あり: WB, IP
種交差性	交差種: Human
免疫原	A region between amino acids 926-976 of Human KIAA0802 (AAH40542.2).
ポジティブ・コントロール	HeLa lysate
特記事項	<p>Antibody concentration was determined by extinction coefficient: absorbance at 280 nm of 1.4 equals 1.0 mg of IgG.</p> <p>The Life Science industry has been in the grips of a reproducibility crisis for a number of years. Abcam is leading the way in addressing this with our range of recombinant monoclonal antibodies and knockout edited cell lines for gold-standard validation. Please check that this product meets your needs before purchasing.</p> <p>If you have any questions, special requirements or concerns, please send us an inquiry and/or contact our Support team ahead of purchase. Recommended alternatives for this product can be found below, along with publications, customer reviews and Q&As</p>

製品の特性

製品の状態	Liquid
保存方法	Shipped at 4°C. Upon delivery aliquot and store at -20°C. Avoid freeze / thaw cycles.
バッファー	<p>pH: 7</p> <p>Preservative: 0.09% Sodium azide</p> <p>Constituent: Tris citrate/phosphate</p>
精製度	Immunogen affinity purified
ポリ/モノ	ポリクローナル
アイソタイプ	IgG

アプリケーション

The Abpromise guarantee

Abpromise保証は、次のテスト済みアプリケーションにおけるab100914の使用に適用されます

アプリケーションノートには、推奨の開始希釈率がありますが、適切な希釈率につきましてはご検討ください。

アプリケーション	Abreviews	特記事項
WB		1/2000 - 1/10000. Predicted molecular weight: 209 kDa.
IP		Use at 5-15 µg/mg of lysate.

ターゲット情報

機能

Microtubule-associated factor involved in the late phase of epithelial polarization and microtubule dynamics regulation. Plays a role in the development and maintenance of non-centrosomal microtubule bundles at the lateral membrane in polarized epithelial cells.

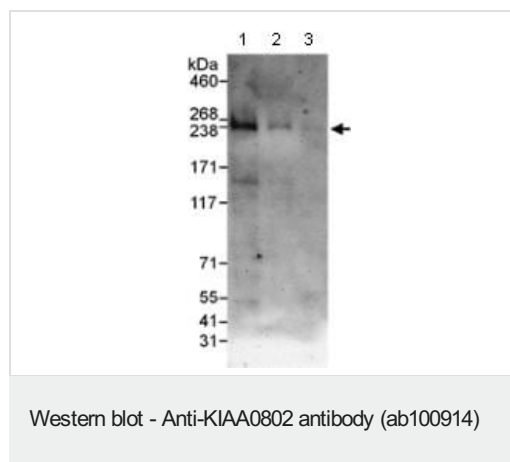
配列類似性

Belongs to the SOGA family.

細胞内局在

Lateral cell membrane. Apical cell membrane. Cytoplasm, cytoskeleton, spindle pole. Midbody. Cytoplasm, cytoskeleton. Colocalized with microtubules at the base of cilia. Gradually accumulates on the apicobasal microtubule bundles during epithelial cell polarization (By similarity). Colocalized with the apicobasal microtubule bundles running beneath the lateral membrane. Colocalized with microtubule bundles in the spindle pole in mitotic cells and in the midbodies at the end of cytokinesis.

画像



All lanes : Anti-KIAA0802 antibody (ab100914) at 1 µg/ml

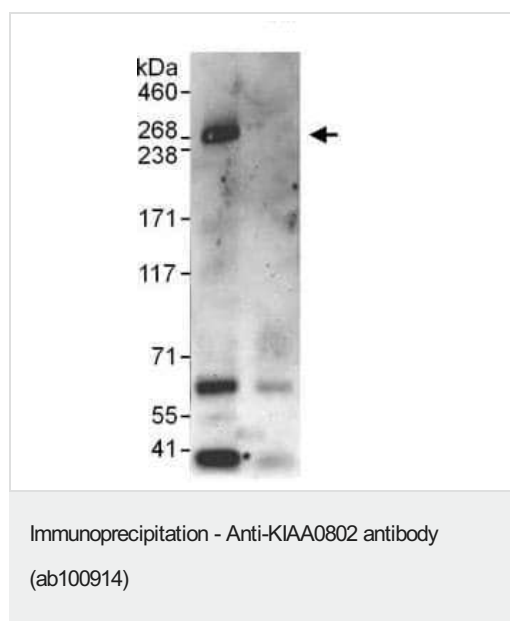
Lane 1 : HeLa Whole Cell Lysate at 50 µg

Lane 2 : HeLa Whole Cell Lysate at 15 µg

Lane 3 : HeLa Whole Cell Lysate at 5 µg

Predicted band size: 209 kDa

Exposure time: 3 minutes



ab100914 at 1 µg/ml staining KIAA0802 in HeLa cell lysate
immunoprecipitated using ab100914 at 10 µg/mg lysate (1 mg/IP;
20% of IP loaded/lane). Exposure time: 3 minutes

Please note: All products are "FOR RESEARCH USE ONLY. NOT FOR USE IN DIAGNOSTIC PROCEDURES"

Our Abpromise to you: Quality guaranteed and expert technical support

- Replacement or refund for products not performing as stated on the datasheet
- Valid for 12 months from date of delivery
- Response to your inquiry within 24 hours
- We provide support in Chinese, English, French, German, Japanese and Spanish
- Extensive multi-media technical resources to help you
- We investigate all quality concerns to ensure our products perform to the highest standards

If the product does not perform as described on this datasheet, we will offer a refund or replacement. For full details of the Abpromise, please visit <https://www.abcam.co.jp/abpromise> or contact our technical team.

Terms and conditions

- Guarantee only valid for products bought direct from Abcam or one of our authorized distributors