

### Anti-Keap1 antibody [OTI1B4] ab119403

★★★★★ **8 Abreviews** **25 References** **画像数 8**

#### 製品の概要

製品名	Anti-Keap1 antibody [OTI1B4]
製品の詳細	Mouse monoclonal [OTI1B4] to Keap1
由来種	Mouse
アプリケーション	<b>適用あり:</b> Flow Cyt (Intra), WB, IHC-P
種交差性	<b>交差種:</b> Mouse, Human, Recombinant fragment
免疫原	Recombinant full length Human Keap1 produced in HEK293T cells (NP_987096).
ポジティブ・コントロール	HEK293T cell lysate transfected with pCMV6-ENTRY Keap1 cDNA; HEK293T cells transfected with pCMV6-ENTRY Keap1 overexpress plasmid; Jurkat and HeLa cells; Human endometrium, endometrium adenocarcinoma and bladder carcinoma tissues.
特記事項	<p>Dilute in PBS (pH7.3) before use.</p> <p>This product was changed from ascites to tissue culture supernatant on 6<sup>th</sup> September 2018. Please note that the dilutions may need to be adjusted accordingly. If you have any questions, please do not hesitate to contact our scientific support team.</p> <p>The Life Science industry has been in the grips of a reproducibility crisis for a number of years. Abcam is leading the way in addressing this with our range of recombinant monoclonal antibodies and knockout edited cell lines for gold-standard validation. Please check that this product meets your needs before purchasing.</p> <p>If you have any questions, special requirements or concerns, please send us an inquiry and/or contact our Support team ahead of purchase. Recommended alternatives for this product can be found below, along with publications, customer reviews and Q&amp;As</p>

#### 製品の特性

製品の状態	Liquid
保存方法	Shipped at 4°C. Upon delivery aliquot and store at -20°C. Avoid repeated freeze / thaw cycles.
バッファー	pH: 7.30 Preservative: 0.02% Sodium azide Constituents: 48% PBS, 1% BSA, 50% Glycerol
精製度	Protein G purified
特記事項(精製)	ab119403 was purified from TCS by affinity chromatography.

ポリ/モノ	モノクローナル
クローン名	OT11B4
アイソタイプ	IgG1

## アプリケーション

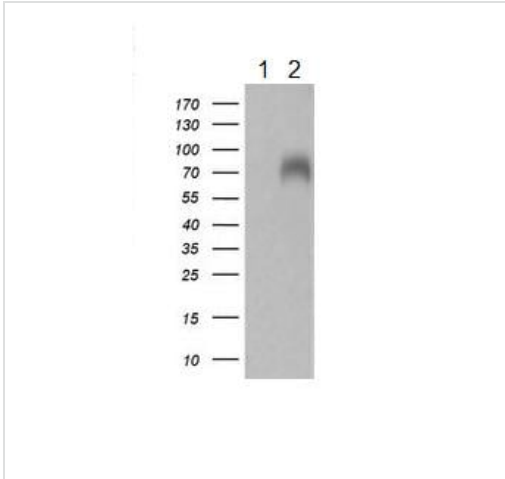
**The Abpromise guarantee** **Abpromise保証は、次のテスト済みアプリケーションにおけるab119403の使用に適用されます**  
 アプリケーションノートには、推奨の開始希釈率がありますが、適切な希釈率につきましてはご検討ください。

アプリケーション	Abreviews	特記事項
Flow Cyt (Intra)		1/100. <b>ab170190</b> - Mouse monoclonal IgG1, is suitable for use as an isotype control with this antibody.
WB	★★★★★ (3)	1/500 - 1/2000. Predicted molecular weight: 70 kDa.
IHC-P	★★★★★ (1)	1/150.

## ターゲット情報

<b>機能</b>	Retains NFE2L2/NRF2 in the cytosol. Functions as substrate adapter protein for the E3 ubiquitin ligase complex formed by CUL3 and RBX1. Targets NFE2L2/NRF2 for ubiquitination and degradation by the proteasome, thus resulting in the suppression of its transcriptional activity and the repression of antioxidant response element-mediated detoxifying enzyme gene expression. May also retain BPTF in the cytosol. Targets PGAM5 for ubiquitination and degradation by the proteasome.
<b>組織特異性</b>	Broadly expressed, with highest levels in skeletal muscle.
<b>配列類似性</b>	Contains 1 BACK (BTB/Kelch associated) domain. Contains 1 BTB (POZ) domain. Contains 6 Kelch repeats.
<b>ドメイン</b>	The Kelch repeats mediate interaction with NFE2L2/NRF2, BPTF and PGAM5.
<b>翻訳後修飾</b>	Ubiquitinated and subject to proteasomal degradation.
<b>細胞内局在</b>	Cytoplasm. Nucleus. Shuttles between cytoplasm and nucleus.

## 画像



Western blot - Anti-Keap1 antibody [OT11B4] (ab119403)

**All lanes** : Anti-Keap1 antibody [OT11B4] (ab119403) at 1/500 dilution

**Lane 1** : HEK293T cell lysate transfected with pCMV6-ENTRY control cDNA

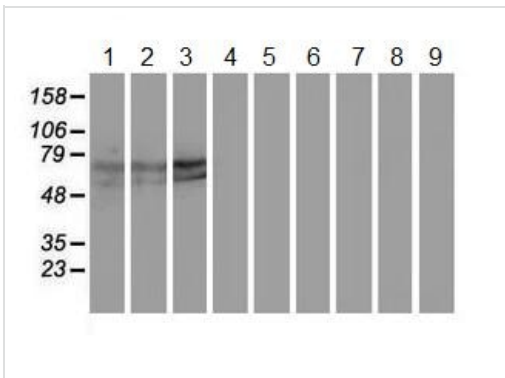
**Lane 2** : HEK293T cell lysate transfected with pCMV6-ENTRY Keap1 cDNA

Lysates/proteins at 5 µg per lane.

Developed using the ECL technique.

**Predicted band size:** 70 kDa

HEK293T cell lysates were generated from transient transfection of the cDNA clone (RC202189)



Western blot - Anti-Keap1 antibody [OT11B4] (ab119403)

**All lanes** : Anti-Keap1 antibody [OT11B4] (ab119403) at 1/500 dilution

**Lane 1** : HepG2 cell extract

**Lane 2** : HeLa cell extract

**Lane 3** : SVT2 cell extract

**Lane 4** : A549 cell extract

**Lane 5** : COS7 cell extract

**Lane 6** : Jurkat cell extract

**Lane 7** : MDCK cell extract

**Lane 8** : PC12 cell extract

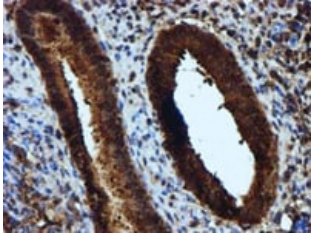
**Lane 9** : MCF7 cell extract

Lysates/proteins at 35 µg per lane.

Developed using the ECL technique.

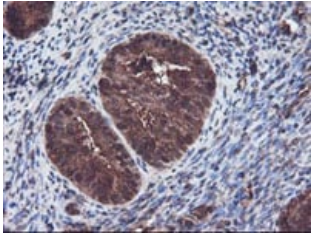
**Predicted band size:** 70 kDa

HEK293T cell lysates were generated from transient transfection of the cDNA clone (RC202189)



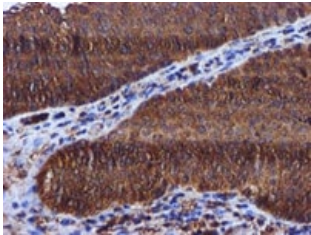
Immunohistochemistry (Formalin/PFA-fixed paraffin-embedded sections) - Anti-Keap1 antibody [OT11B4] (ab119403)

ab119403 at 1/150 dilution staining Keap1 in paraffin-embedded Human endometrium tissue by Immunohistochemistry.



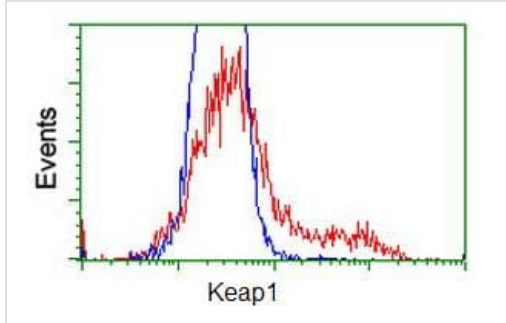
Immunohistochemistry (Formalin/PFA-fixed paraffin-embedded sections) - Anti-Keap1 antibody [OT11B4] (ab119403)

ab119403 at 1/150 dilution staining Keap1 in paraffin-embedded Human endometrium adenocarcinoma tissue by Immunohistochemistry.



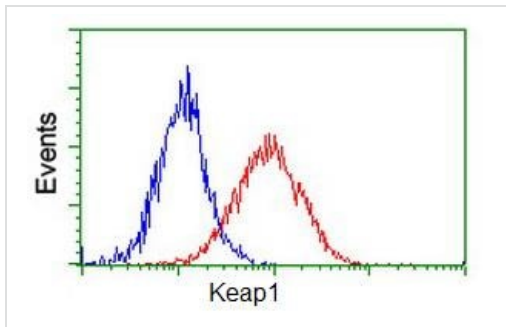
Immunohistochemistry (Formalin/PFA-fixed paraffin-embedded sections) - Anti-Keap1 antibody [OT11B4] (ab119403)

ab119403 at 1/150 dilution staining Keap1 in paraffin-embedded Human bladder carcinoma tissue by Immunohistochemistry.



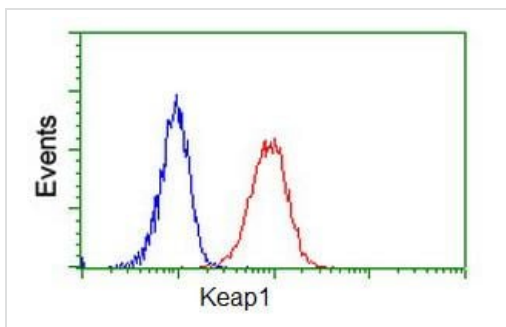
Flow Cytometry (Intracellular) - Anti-Keap1 antibody [OT11B4] (ab119403)

ab119403 at 1/100 dilution staining Keap1 in HEK293T cells transfected with either pCMV6-ENTRY Keap1 overexpress plasmid (Red) or empty vector control plasmid (Blue) and then analysed by Flow Cytometry (Intracellular).



Flow Cytometry (Intracellular) - Anti-Keap1 antibody [OT11B4] (ab119403)

ab119403 at 1/100 dilution staining Keap1 in HeLa cells by Flow cytometry (Intracellular) (Red) compared to a nonspecific negative control antibody (Blue).



Flow Cytometry (Intracellular) - Anti-Keap1 antibody [OT11B4] (ab119403)

ab119403 at 1/100 dilution staining Keap1 in Jurkat cells by Flow cytometry (Intracellular) (Red) compared to a nonspecific negative control antibody (Blue).

**Please note:** All products are "FOR RESEARCH USE ONLY. NOT FOR USE IN DIAGNOSTIC PROCEDURES"

## **Our Abpromise to you: Quality guaranteed and expert technical support**

---

- Replacement or refund for products not performing as stated on the datasheet
- Valid for 12 months from date of delivery
- Response to your inquiry within 24 hours
  
- We provide support in Chinese, English, French, German, Japanese and Spanish
- Extensive multi-media technical resources to help you
- We investigate all quality concerns to ensure our products perform to the highest standards

If the product does not perform as described on this datasheet, we will offer a refund or replacement. For full details of the Abpromise, please visit <https://www.abcam.co.jp/abpromise> or contact our technical team.

## **Terms and conditions**

---

- Guarantee only valid for products bought direct from Abcam or one of our authorized distributors