


Anti-KDS antibody ab70297

★★★★★ [2 Abreviews](#) [2 References](#) [画像数 2](#)

製品の概要

製品名	Anti-KDS antibody
製品の詳細	Rabbit polyclonal to KDS
由来種	Rabbit
アプリケーション	適用あり: WB, IP
種交差性	交差種: Mouse, Human 交差が予測される動物種: Rat, Rabbit, Horse, Guinea pig, Cow, Dog, Pig, Xenopus laevis, Rhesus monkey, Gorilla, Chinese hamster, Orangutan, Elephant 
免疫原	Synthetic peptide corresponding to Human KDS (C terminal). Database link: Q9H2K8
ポジティブ・コントロール	WB: HeLa, NIH/3T3 whole cell lysates. IP: HeLa lysate
特記事項	<p>The Life Science industry has been in the grips of a reproducibility crisis for a number of years. Abcam is leading the way in addressing this with our range of recombinant monoclonal antibodies and knockout edited cell lines for gold-standard validation. Please check that this product meets your needs before purchasing.</p> <p>If you have any questions, special requirements or concerns, please send us an inquiry and/or contact our Support team ahead of purchase. Recommended alternatives for this product can be found below, along with publications, customer reviews and Q&As</p>

製品の特性

製品の状態	Liquid
保存方法	Shipped at 4°C. Upon delivery aliquot and store at -20°C. Avoid freeze / thaw cycles.
バッファー	pH: 7 Preservative: 0.09% Sodium azide Constituents: 1.815% Tris, 1.764% Sodium citrate, 0.021% PBS
精製度	Immunogen affinity purified
特記事項 (精製)	ab70297 was affinity purified using an epitope specific to JIK immobilized on solid support.
ポリ/モノ	ポリクローナル
アイソタイプ	IgG

アプリケーション

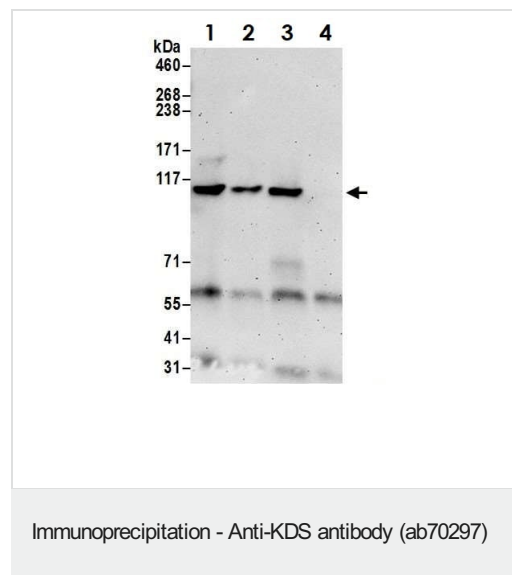
The Abpromise guarantee Abpromise保証は、 次のテスト済みアプリケーションにおけるab70297の使用に適用されます
アプリケーションノートには、推奨の開始希釈率がありますが、適切な希釈率につきましてはご検討ください。

アプリケーション	Abreviews	特記事項
WB	★★★★★ (2)	1/2000 - 1/10000. Detects a band of approximately 120 kDa (predicted molecular weight: 105 kDa).
IP		Use at 2-10 µg/mg of lysate.

ターゲット情報

機能	Inhibits the basal activity of Jun kinase. Negatively regulated by epidermal growth factor (EGF). When overexpressed, may activate ERK1/ERK2 and JNK/SAPK.
組織特異性	Ubiquitously expressed at a low level, and highly expressed in peripheral blood leukocytes (PBLs), thymus, spleen, kidney, skeletal muscle, heart and liver.
配列類似性	Belongs to the protein kinase superfamily. STE Ser/Thr protein kinase family. STE20 subfamily. Contains 1 protein kinase domain.
翻訳後修飾	Autophosphorylated. Phosphorylated upon DNA damage, probably by ATM or ATR.
細胞内局在	Cytoplasm. Cell membrane. Also localized to the peripheral cell membrane.

画像



Immunoprecipitation of HeLa whole cell lysate using ab70297.

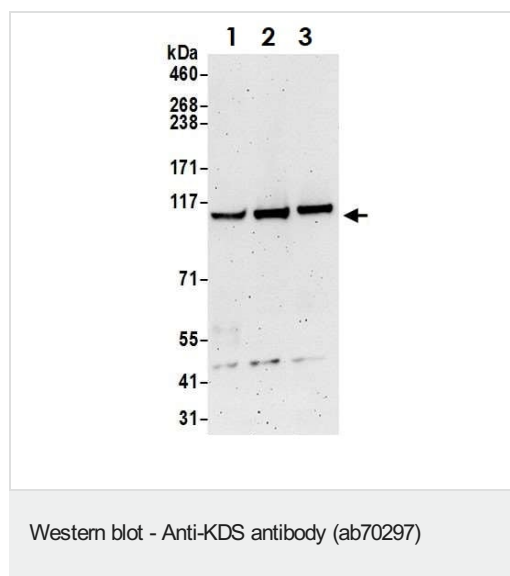
Lane 1: ab70297 current lot

Lane 2: ab70297 previous lot

Lane 3: other rabbit anti-KDS antibody

Lane 4: Control IgG

Immunoprecipitation - Anti-KDS antibody (ab70297)



All lanes : Anti-KDS antibody (ab70297) at 0.1 µg/ml

Lane 1 : HeLa whole cell lysate

Lane 2 : HEK293T whole cell lysate

Lane 3 : NIH/3T3 whole cell lysate

Lysates/proteins at 50 µg per lane.

Predicted band size: 105 kDa

Please note: All products are "FOR RESEARCH USE ONLY. NOT FOR USE IN DIAGNOSTIC PROCEDURES"

Our Abpromise to you: Quality guaranteed and expert technical support

- Replacement or refund for products not performing as stated on the datasheet
- Valid for 12 months from date of delivery
- Response to your inquiry within 24 hours
- We provide support in Chinese, English, French, German, Japanese and Spanish
- Extensive multi-media technical resources to help you
- We investigate all quality concerns to ensure our products perform to the highest standards

If the product does not perform as described on this datasheet, we will offer a refund or replacement. For full details of the Abpromise, please visit <https://www.abcam.co.jp/abpromise> or contact our technical team.

Terms and conditions

- Guarantee only valid for products bought direct from Abcam or one of our authorized distributors