

Anti-KDM4D / JMJD2D antibody ab93694

17 References [画像数 2](#)

製品の概要

製品名	Anti-KDM4D / JMJD2D antibody
製品の詳細	Rabbit polyclonal to KDM4D / JMJD2D
由来種	Rabbit
アプリケーション	適用あり: WB, ICC/IF
種交差性	交差種: Human
免疫原	Recombinant fragment, corresponding to amino acids 1-354 of Human KDM4D/ JMJD2D (43kDa).
特記事項	The immunogen used for this product shares 64%, 71% and 65% homology with KDM4A/JMJD2A, KDM4B/JMJD2B and KDM4C/JMJD2C respectively. Cross-reactivity with these proteins has not been confirmed experimentally.

The Life Science industry has been in the grips of a reproducibility crisis for a number of years. Abcam is leading the way in addressing this with our range of recombinant monoclonal antibodies and knockout edited cell lines for gold-standard validation. Please check that this product meets your needs before purchasing.

If you have any questions, special requirements or concerns, please send us an inquiry and/or contact our Support team ahead of purchase. Recommended alternatives for this product can be found below, along with publications, customer reviews and Q&As

製品の特性

製品の状態	Liquid
保存方法	Shipped at 4°C. Store at -20°C. Stable for 12 months at -20°C.
バッファー	pH: 7.40 Preservative: 0.02% Sodium azide Constituents: 0.05% BSA, 50% Glycerol, Tris buffered saline
精製度	Immunogen affinity purified
ポリ/モノ	ポリクローナル
アイソタイプ	IgG

アプリケーション

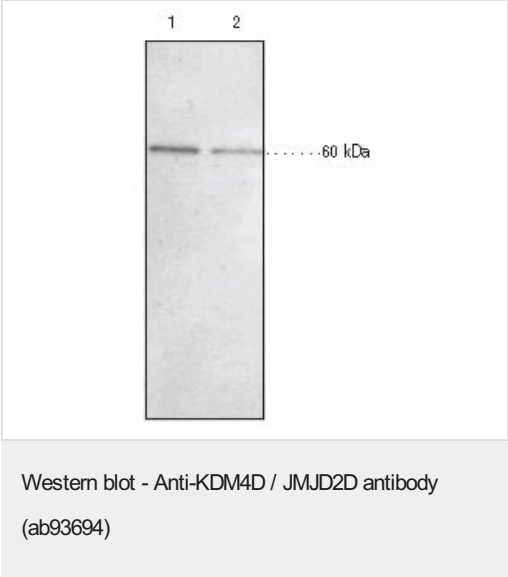
The Abpromise guarantee Abpromise保証は、 次のテスト済みアプリケーションにおけるab93694の使用に適用されます
アプリケーションノートには、推奨の開始希釈率がありますが、適切な希釈率につきましてはご検討ください。

アプリケーション	Abreviews	特記事項
WB		1/200. Predicted molecular weight: 58 kDa.
ICC/IF		Use a concentration of 10 µg/ml.

ターゲット情報

機能	Histone demethylase that specifically demethylates 'Lys-9' of histone H3, thereby playing a central role in histone code. Does not demethylate histone H3 'Lys-4', H3 'Lys-27', H3 'Lys-36' nor H4 'Lys-20'. Demethylates both di- and trimethylated H3 'Lys-9' residue, while it has no activity on monomethylated residues. Demethylation of Lys residue generates formaldehyde and succinate.
配列類似性	Belongs to the JHDM3 histone demethylase family. Contains 1 JmjC domain. Contains 1 JmjN domain.
細胞内局在	Nucleus.

画像

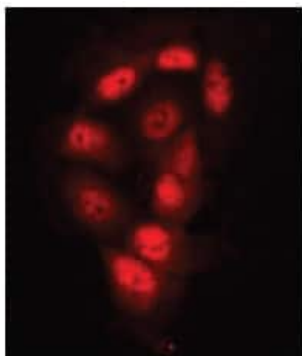


All lanes : Anti-KDM4D / JMJD2D antibody (ab93694) at 1/200 dilution

Lane 1 : DLD1 cell lysate at 10 µg

Lane 2 : DLD1 cell lysate at 5 µg

Predicted band size: 58 kDa



Immunocytochemistry/ Immunofluorescence - Anti-KDM4D / JMJD2D antibody (ab93694)

ab93694, at 10µg/ml, staining KDM4D / JMJD2D in DLD1 (Human Colorectal Adenocarcinoma) cells by Immunofluorescence. Cells were fixed with 1% formaldehyde, permeabilized with 0.1% Triton X-100 and blocked with normal goat serum. Secondary antibody: Goat anti Rabbit Cy3 at 1/250 dilution.

Please note: All products are "FOR RESEARCH USE ONLY. NOT FOR USE IN DIAGNOSTIC PROCEDURES"

Our Abpromise to you: Quality guaranteed and expert technical support

- Replacement or refund for products not performing as stated on the datasheet
- Valid for 12 months from date of delivery
- Response to your inquiry within 24 hours
- We provide support in Chinese, English, French, German, Japanese and Spanish
- Extensive multi-media technical resources to help you
- We investigate all quality concerns to ensure our products perform to the highest standards

If the product does not perform as described on this datasheet, we will offer a refund or replacement. For full details of the Abpromise, please visit <https://www.abcam.co.jp/abpromise> or contact our technical team.

Terms and conditions

- Guarantee only valid for products bought direct from Abcam or one of our authorized distributors