


Anti-KDM3A / JHDM2A antibody ab80598

★★★★☆ [2 Abreviews](#) [3 References](#) [画像数 2](#)

製品の概要

製品名	Anti-KDM3A / JHDM2A antibody
製品の詳細	Rabbit polyclonal to KDM3A / JHDM2A
由来種	Rabbit
アプリケーション	適用あり: WB, IP
種交差性	交差種: Human 交差が予測される動物種: Cow, Dog, Pig, Chimpanzee, Ferret, Rhesus monkey, Gorilla 
免疫原	Synthetic peptide. This information is proprietary to Abcam and/or its suppliers.
ポジティブ・コントロール	HeLa whole cell lysate
特記事項	<p>The Life Science industry has been in the grips of a reproducibility crisis for a number of years. Abcam is leading the way in addressing this with our range of recombinant monoclonal antibodies and knockout edited cell lines for gold-standard validation. Please check that this product meets your needs before purchasing.</p> <p>If you have any questions, special requirements or concerns, please send us an inquiry and/or contact our Support team ahead of purchase. Recommended alternatives for this product can be found below, along with publications, customer reviews and Q&As</p>

製品の特性

製品の状態	Liquid
保存方法	Shipped at 4°C. Upon delivery aliquot and store at -20°C. Avoid freeze / thaw cycles.
バッファー	pH: 7 Preservative: 0.09% Sodium azide Constituents: 1.815% Tris, 1.764% Sodium citrate, 0.021% PBS
精製度	Immunogen affinity purified
特記事項(精製)	Affinity purified using an epitope specific to KDM3A / JHDM2A immobilized on solid support.
ポリ/モノ	ポリクローナル
アイソタイプ	IgG

アプリケーション

The Abpromise guarantee

Abpromise保証は、次のテスト済みアプリケーションにおけるab80598の使用に適用されます

アプリケーションノートには、推奨の開始希釈率がありますが、適切な希釈率につきましてはご確認ください。

アプリケーション	Abreviews	特記事項
WB	★☆☆☆☆ (1)	1/2000 - 1/10000. Predicted molecular weight: 147 kDa.
IP		Use at 2-5 µg/mg of lysate.

ターゲット情報

機能

Histone demethylase that specifically demethylates 'Lys-9' of histone H3, thereby playing a central role in histone code. Preferentially demethylates mono- and dimethylated H3 'Lys-9' residue, with a preference for dimethylated residue, while it has weak or no activity on trimethylated H3 'Lys-9'. Demethylation of Lys residue generates formaldehyde and succinate. Involved in hormone-dependent transcriptional activation, by participating in recruitment to androgen-receptor target genes, resulting in H3 'Lys-9' demethylation and transcriptional activation. Involved in spermatogenesis by regulating expression of target genes such as PRM1 and TMP1 which are required for packaging and condensation of sperm chromatin. Involved in obesity resistance through regulation of metabolic genes such as PPARA and UCP1.

配列類似性

Belongs to the JHDM2 histone demethylase family.
Contains 1 JmjC domain.

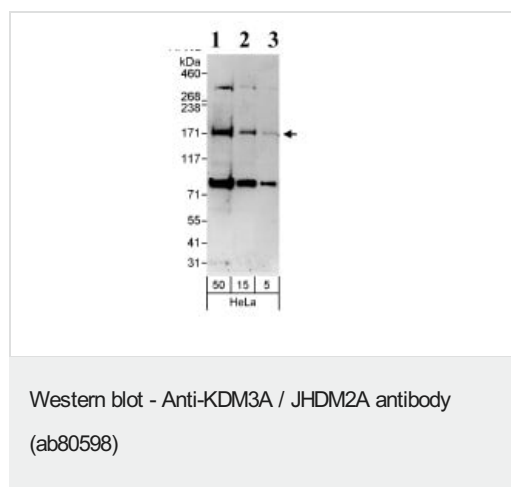
ドメイン

The JmjC domain and the C6-type zinc-finger are required for the demethylation activity. Leu-Xaa-Xaa-Leu-Leu (LXXLL) motifs are known to mediate the association with nuclear receptors.

細胞内局在

Cytoplasm. Nucleus. Nuclear in round spermatids. When spermatids start to elongate, localizes to the cytoplasm where it forms distinct foci which disappear in mature spermatozoa.

画像



All lanes : Anti-KDM3A / JHDM2A antibody (ab80598) at 0.1 µg/ml

Lane 1 : whole HeLa cell lysate at 50 µg

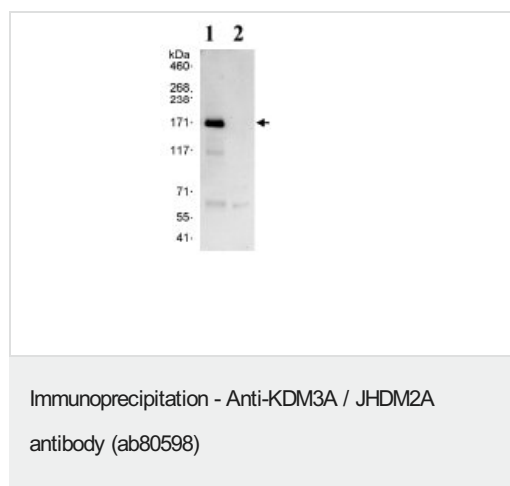
Lane 2 : whole HeLa cell lysate at 15 µg

Lane 3 : whole HeLa cell lysate at 5 µg

Predicted band size: 147 kDa

Observed band size: 171 kDa

Additional bands at: 300 kDa, 85 kDa. We are unsure as to the identity of these extra bands.



Detection of Human KDM3A / JHDM2A by Immunoprecipitation. Samples: Whole cell lysate (1 mg for IP, 20% of IP loaded) from HeLa cells. Antibodies: Lane 1: ab80598 used for IP at 3 µg/mg lysate; Lane 2: a control IgG was used for IP. For subsequent Western blot detection, ab80598 was used at 1 µg/ml.

Please note: All products are "FOR RESEARCH USE ONLY. NOT FOR USE IN DIAGNOSTIC PROCEDURES"

Our Abpromise to you: Quality guaranteed and expert technical support

- Replacement or refund for products not performing as stated on the datasheet
- Valid for 12 months from date of delivery
- Response to your inquiry within 24 hours
- We provide support in Chinese, English, French, German, Japanese and Spanish
- Extensive multi-media technical resources to help you
- We investigate all quality concerns to ensure our products perform to the highest standards

If the product does not perform as described on this datasheet, we will offer a refund or replacement. For full details of the Abpromise, please visit <https://www.abcam.co.jp/abpromise> or contact our technical team.

Terms and conditions

- Guarantee only valid for products bought direct from Abcam or one of our authorized distributors