




Anti-KDM2A antibody ab99242

2 References [画像数 2](#)

製品の概要

製品名	Anti-KDM2A antibody
製品の詳細	Rabbit polyclonal to KDM2A
由来種	Rabbit
アプリケーション	適用あり: IHC-P
種交差性	交差種: Human 交差が予測される動物種: Rabbit, Horse, Guinea pig, Cow, Dog, Pig, Chimpanzee, Gorilla, Orangutan, Bat 
免疫原	Synthetic peptide corresponding to Human KDM2A aa 800-900. Database link: NP_036440.1 <div>  Run BLAST with  Run BLAST with </div>
ポジティブ・コントロール	Human Anaplastic Thyroid Carcinoma, Breast Carcinoma, Lung Adenocarcinoma, Ovarian Carcinoma, Skin Basal Cell Carcinoma and Stomach Adenocarcinoma
特記事項	<p>The Life Science industry has been in the grips of a reproducibility crisis for a number of years. Abcam is leading the way in addressing this with our range of recombinant monoclonal antibodies and knockout edited cell lines for gold-standard validation. Please check that this product meets your needs before purchasing.</p> <p>If you have any questions, special requirements or concerns, please send us an inquiry and/or contact our Support team ahead of purchase. Recommended alternatives for this product can be found below, along with publications, customer reviews and Q&As</p>

製品の特性

製品の状態	Liquid
保存方法	Shipped at 4°C. Upon delivery aliquot and store at -20°C. Avoid freeze / thaw cycles.
バッファー	pH: 6.8 Preservative: 0.09% Sodium azide Constituents: 0.1% BSA, Tris buffered saline
精製度	Immunogen affinity purified
ポリ/モノ	ポリクローナル
アイソタイプ	IgG

アプリケーション

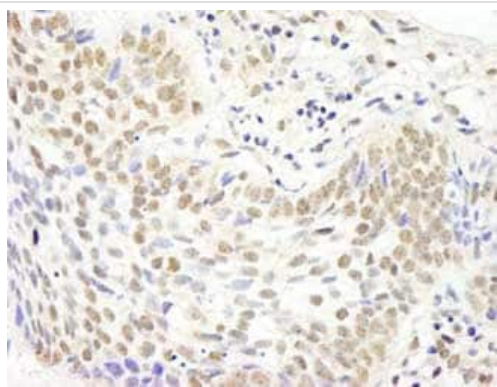
The Abpromise guarantee **Abpromise保証は、**次のテスト済みアプリケーションにおけるab99242の使用に適用されます
アプリケーションノートには、推奨の開始希釈率がありますが、適切な希釈率につきましてはご検討ください。

アプリケーション	Abreviews	特記事項
IHC-P		1/100 - 1/500. Epitope exposure is recommended. Epitope exposure with citrate buffer will enhance staining.

ターゲット情報

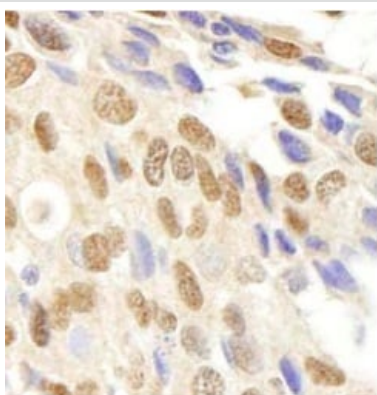
機能	Histone demethylase that specifically demethylates 'Lys-36' of histone H3, thereby playing a central role in histone code. Preferentially demethylates dimethylated H3 'Lys-36' residue while it has weak or no activity for mono- and tri-methylated H3 'Lys-36'. May also recognize and bind to some phosphorylated proteins and promote their ubiquitination and degradation. Required to maintain the heterochromatic state. Associates with centromeres and represses transcription of small non-coding RNAs that are encoded by the clusters of satellite repeats at the centromere. Required to sustain centromeric integrity and genomic stability, particularly during mitosis.
組織特異性	Widely expressed, with highest levels in brain, testis and ovary, followed by lung.
配列類似性	Belongs to the JHDM1 histone demethylase family. Contains 1 CXXC-type zinc finger. Contains 1 F-box domain. Contains 1 JmjC domain. Contains 6 LRR (leucine-rich) repeats. Contains 1 PHD-type zinc finger.
ドメイン	The JmjC domain mediates demethylation activity and is required for satellite silencing. The CXXC zinc finger preferentially recognizes nonmethylated CpG DNA, and binding is blocked when the CpG DNA is methylated.
翻訳後修飾	Phosphorylated upon DNA damage, probably by ATM or ATR.
細胞内局在	Nucleus > nucleoplasm. Punctate expression throughout the nucleoplasm and enriched in the perinucleolar region. Specifically nucleates at CpG islands where it's presence results in chromatin depleted in H3K36me2.

画像



Immunohistochemistry (Formalin/PFA-fixed paraffin-embedded sections) - Anti-KDM2A antibody (ab99242)

ab99242, at 1/250 dilution, staining KDM2A in formalin-fixed paraffin-embedded Human skin basal cell carcinoma by Immunohistochemistry using DAB staining.



Immunohistochemistry (Formalin/PFA-fixed paraffin-embedded sections) - Anti-KDM2A antibody (ab99242)

ab99242, at 1/250 dilution, staining KDM2A in formalin-fixed paraffin-embedded Human breast carcinoma by Immunohistochemistry using DAB staining.

Please note: All products are "FOR RESEARCH USE ONLY. NOT FOR USE IN DIAGNOSTIC PROCEDURES"

Our Abpromise to you: Quality guaranteed and expert technical support

- Replacement or refund for products not performing as stated on the datasheet
- Valid for 12 months from date of delivery
- Response to your inquiry within 24 hours
- We provide support in Chinese, English, French, German, Japanese and Spanish
- Extensive multi-media technical resources to help you
- We investigate all quality concerns to ensure our products perform to the highest standards

If the product does not perform as described on this datasheet, we will offer a refund or replacement. For full details of the Abpromise, please visit <https://www.abcam.co.jp/abpromise> or contact our technical team.

Terms and conditions

- Guarantee only valid for products bought direct from Abcam or one of our authorized distributors