

Anti-KDEL Receptor antibody [KR-10] ab69659

★★★★☆ [4 Abreviews](#) [11 References](#) [画像数 1](#)

製品の概要

製品名	Anti-KDEL Receptor antibody [KR-10]
製品の詳細	Mouse monoclonal [KR-10] to KDEL Receptor
由来種	Mouse
アプリケーション	適用あり: WB
種交差性	交差種: Rat
免疫原	Synthetic peptide corresponding to Cow KDEL Receptor aa 192-212 conjugated to keyhole limpet haemocyanin. 21 residue synthetic peptide. Sequence: CDDFFLYITKVLKGKKLSLPA

Database link: [Q99JH8](#)

 [Run BLAST with](#)

 [Run BLAST with](#)

特記事項

The Life Science industry has been in the grips of a reproducibility crisis for a number of years. Abcam is leading the way in addressing this with our range of recombinant monoclonal antibodies and knockout edited cell lines for gold-standard validation. Please check that this product meets your needs before purchasing.

If you have any questions, special requirements or concerns, please send us an inquiry and/or contact our Support team ahead of purchase. Recommended alternatives for this product can be found below, along with publications, customer reviews and Q&As

製品の特性

製品の状態	Liquid
保存方法	Shipped at 4°C. Upon delivery aliquot and store at -20°C or -80°C. Avoid repeated freeze / thaw cycles.
バッファー	Preservative: 0.09% Sodium azide Constituents: 50% Glycerol (glycerin, glycerine), PBS
精製度	Protein G purified
ポリ/モノ	モノクローナル
クローン名	KR-10
アイソタイプ	IgG1

アプリケーション

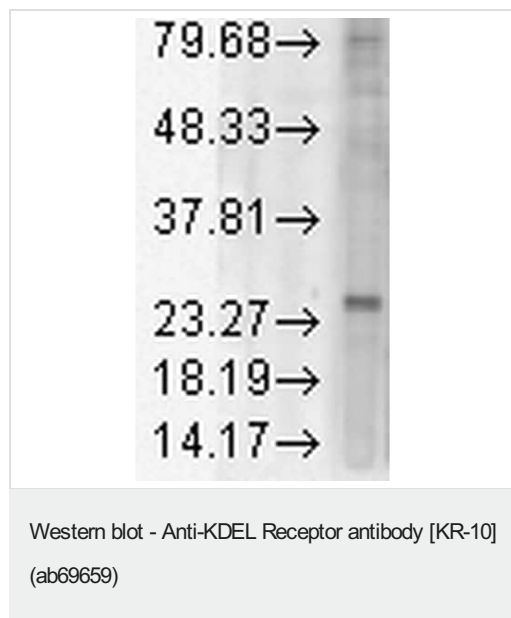
The Abpromise guarantee Abpromise保証は、次のテスト済みアプリケーションにおけるab69659の使用に適用されます
アプリケーションノートには、推奨の開始希釈率がありますが、適切な希釈率につきましてはご検討ください。

アプリケーション	Abreviews	特記事項
WB	★★★★☆ (2)	1/1000. Predicted molecular weight: 24 kDa.

ターゲット情報

機能	Required for the retention of luminal endoplasmic reticulum resident proteins via vesicular recycling. This receptor recognizes the C-terminal K-D-E-L motif. COPI-coated transport intermediates, either in the form of round vesicles or as tubular processes, mediate retrograde traffic of the KDEL receptor-ligand complexes. Also required for normal vesicular traffic through the Golgi.
配列類似性	Belongs to the ERD2 family.
翻訳後修飾	Phosphorylation by PKA at Ser-209 is required for endoplasmic reticulum retention function.
細胞内局在	Cytoplasmic vesicle, COPI-coated vesicle membrane. Endoplasmic reticulum membrane. Endoplasmic reticulum-Golgi intermediate compartment membrane.

画像



Anti-KDEL Receptor antibody [KR-10] (ab69659) at 1/1000 dilution
+ Rat tissue lysate at 15 µg

Secondary

Sheep Anti-Mouse IgG: HRP for 1 hour at RT.

Predicted band size: 24 kDa

Please note: All products are "FOR RESEARCH USE ONLY. NOT FOR USE IN DIAGNOSTIC PROCEDURES"

Our Abpromise to you: Quality guaranteed and expert technical support

- Replacement or refund for products not performing as stated on the datasheet
- Valid for 12 months from date of delivery
- Response to your inquiry within 24 hours
- We provide support in Chinese, English, French, German, Japanese and Spanish
- Extensive multi-media technical resources to help you
- We investigate all quality concerns to ensure our products perform to the highest standards

If the product does not perform as described on this datasheet, we will offer a refund or replacement. For full details of the Abpromise, please visit <https://www.abcam.co.jp/abpromise> or contact our technical team.

Terms and conditions

- Guarantee only valid for products bought direct from Abcam or one of our authorized distributors