


Anti-KCC2 antibody ab97502

★★★★★ [1 Abreviews](#) [2 References](#) [画像数 2](#)

製品の概要

製品名	Anti-KCC2 antibody
製品の詳細	Rabbit polyclonal to KCC2
由来種	Rabbit
アプリケーション	適用あり: ICC/IF, WB
種交差性	交差種: Rat 交差が予測される動物種: Mouse, Cow, Dog, Human 
免疫原	Synthetic peptide. This information is proprietary to Abcam and/or its suppliers.
ポジティブ・コントロール	This antibody gave a positive signal in the following rat tissue lysates: brain; cortex; hippocampus.
特記事項	<p>The Life Science industry has been in the grips of a reproducibility crisis for a number of years. Abcam is leading the way in addressing this with our range of recombinant monoclonal antibodies and knockout edited cell lines for gold-standard validation. Please check that this product meets your needs before purchasing.</p> <p>If you have any questions, special requirements or concerns, please send us an inquiry and/or contact our Support team ahead of purchase. Recommended alternatives for this product can be found below, along with publications, customer reviews and Q&As</p>

製品の特性

製品の状態	Liquid
保存方法	Shipped at 4°C. Store at +4°C short term (1-2 weeks). Upon delivery aliquot. Store at -20°C or -80°C. Avoid freeze / thaw cycle.
バッファー	pH: 7.40 Preservative: 0.02% Sodium azide Constituent: PBS
精製度	Batches of this product that have a concentration < 1mg/ml may have BSA added as a stabilising agent. If you would like information about the formulation of a specific lot, please contact our scientific support team who will be happy to help. Immunogen affinity purified
ポリモノ	ポリクローナル
アイソタイプ	IgG

アプリケーション

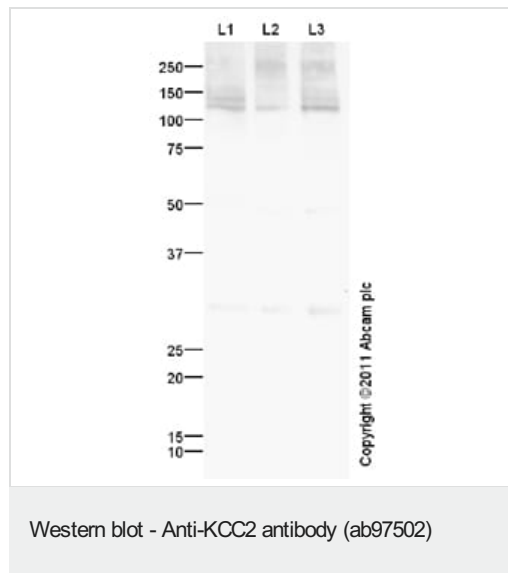
The Abpromise guarantee Abpromise保証は、次のテスト済みアプリケーションにおけるab97502の使用に適用されます
アプリケーションノートには、推奨の開始希釈率がありますが、適切な希釈率につきましてはご確認ください。

アプリケーション	Abreviews	特記事項
ICC/IF		Use a concentration of 5 µg/ml.
WB	★★★★★ (1)	Use a concentration of 1 µg/ml. Detects a band of approximately 126 kDa (predicted molecular weight: 126 kDa).

ターゲット情報

機能	Mediates electroneutral potassium-chloride cotransport in mature neurons. Transport occurs under isotonic conditions, but is activated 20-fold by cell swelling. Important for Cl(-) homeostasis in neurons.
組織特異性	Brain specific. Detected in neuronal cells.
配列類似性	Belongs to the SLC12A transporter family.
細胞内局在	Membrane.

画像



All lanes : Anti-KCC2 antibody (ab97502) at 1 µg/ml

Lane 1 : Brain (Rat) Tissue Lysate

Lane 2 : Rat Cortex Tissue Lysate

Lane 3 : Rat Hippocampus Tissue Lysate

Lysates/proteins at 10 µg per lane.

Secondary

All lanes : Goat Anti-Rabbit IgG H&L (HRP) preadsorbed (**ab97080**) at 1/5000 dilution

Developed using the ECL technique.

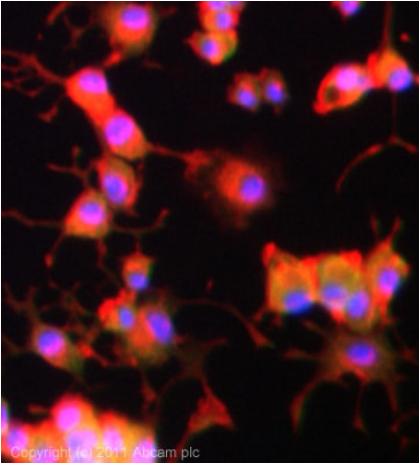
Performed under reducing conditions.

Predicted band size: 126 kDa

Observed band size: 126 kDa

Additional bands at: 250 kDa, 30 kDa. We are unsure as to the identity of these extra bands.

Exposure time: 2 minutes



Immunocytochemistry/ Immunofluorescence - Anti-KCC2 antibody (ab97502)

ICC/IF image of ab97502 stained PC12 cells. The cells were 100% methanol fixed (5 min) and then incubated in 1%BSA / 10% normal goat serum / 0.3M glycine in 0.1% PBS-Tween for 1h to permeabilise the cells and block non-specific protein-protein interactions. The cells were then incubated with the antibody (ab97502, 5µg/ml) overnight at +4°C. The secondary antibody (green) was **ab96899**, DyLight® 488 goat anti-rabbit IgG (H+L) used at a 1/250 dilution for 1h. Alexa Fluor® 594 WGA was used to label plasma membranes (red) at a 1/200 dilution for 1h. DAPI was used to stain the cell nuclei (blue) at a concentration of 1.43µM.

Please note: All products are "FOR RESEARCH USE ONLY. NOT FOR USE IN DIAGNOSTIC PROCEDURES"

Our Abpromise to you: Quality guaranteed and expert technical support

- Replacement or refund for products not performing as stated on the datasheet
- Valid for 12 months from date of delivery
- Response to your inquiry within 24 hours
- We provide support in Chinese, English, French, German, Japanese and Spanish
- Extensive multi-media technical resources to help you
- We investigate all quality concerns to ensure our products perform to the highest standards

If the product does not perform as described on this datasheet, we will offer a refund or replacement. For full details of the Abpromise, please visit <https://www.abcam.co.jp/abpromise> or contact our technical team.

Terms and conditions

- Guarantee only valid for products bought direct from Abcam or one of our authorized distributors