


Anti-KAT8 / MYST1 / MOF antibody ab72056

3 References [画像数 4](#)

製品の概要

製品名	Anti-KAT8 / MYST1 / MOF antibody
製品の詳細	Rabbit polyclonal to KAT8 / MYST1 / MOF
由来種	Rabbit
アプリケーション	適用あり: IHC-P, WB, IP
種交差性	交差種: Human 交差が予測される動物種: Cow, Chimpanzee, Rhesus monkey, Gorilla, Orangutan, Bat, Elephant 
免疫原	Synthetic peptide corresponding to Human KAT8/ MYST1/ MOF aa 1-100 (N terminal). Database link: Q9H7Z6
ポジティブ・コントロール	Whole cell lysate from HeLa cells.
特記事項	<p>The Life Science industry has been in the grips of a reproducibility crisis for a number of years. Abcam is leading the way in addressing this with our range of recombinant monoclonal antibodies and knockout edited cell lines for gold-standard validation. Please check that this product meets your needs before purchasing.</p> <p>If you have any questions, special requirements or concerns, please send us an inquiry and/or contact our Support team ahead of purchase. Recommended alternatives for this product can be found below, along with publications, customer reviews and Q&As</p>

製品の特性

製品の状態	Liquid
保存方法	Shipped at 4°C. Upon delivery aliquot and store at -20°C. Avoid freeze / thaw cycles.
バッファー	pH: 7 Preservative: 0.09% Sodium azide Constituents: 1.815% Tris, 1.764% Sodium citrate, 0.021% PBS
精製度	Immunogen affinity purified
ポリ/モノ	ポリクローナル
アイソタイプ	IgG

アプリケーション

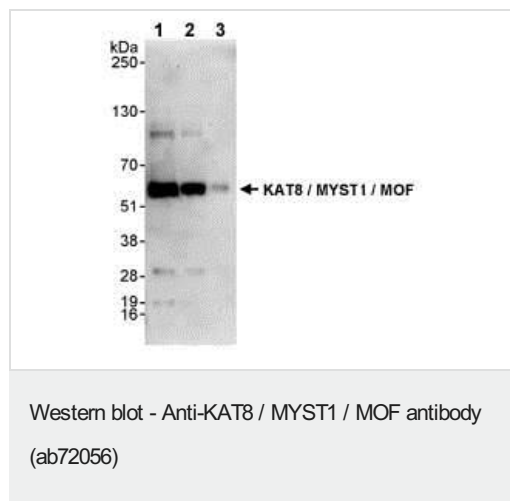
The Abpromise guarantee **Abpromise保証は、次のテスト済みアプリケーションにおけるab72056の使用に適用されます**
 アプリケーションノートには、推奨の開始希釈率がありますが、適切な希釈率につきましてはご検討ください。

アプリケーション	Abreviews	特記事項
IHC-P		Use a concentration of 5 µg/ml. Perform heat mediated antigen retrieval with Tris/EDTA buffer pH 9.0 before commencing with IHC staining protocol.
WB		1/1000 - 1/10000. Detects a band of approximately 60 kDa (predicted molecular weight: 52 kDa).
IP		Use at 2-5 µg/mg of lysate.

ターゲット情報

機能	Histone acetyltransferase which may be involved in transcriptional activation. May influence the function of ATM.
配列類似性	Belongs to the MYST (SAS/MOZ) family. Contains 1 C2HC-type zinc finger. Contains 1 chromo domain.
細胞内局在	Nucleus.

画像



All lanes : Anti-KAT8 / MYST1 / MOF antibody (ab72056) at 0.4 µg/ml

Lane 1 : Whole cell lysate from HeLa cells at 50 µg

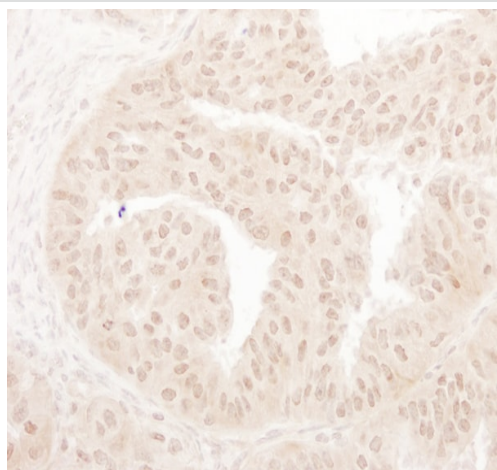
Lane 2 : Whole cell lysate from HeLa cells at 15 µg

Lane 3 : Whole cell lysate from HeLa cells at 5 µg

Predicted band size: 52 kDa

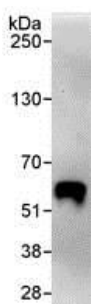
Observed band size: 60 kDa

Additional bands at: 100 kDa, 19 kDa, 28 kDa. We are unsure as to the identity of these extra bands.



Immunohistochemistry (Formalin/PFA-fixed paraffin-embedded sections) analysis of human ovarian carcinoma tissue labelling KAT8 / MYST1 / MOF with ab72056 at 1/1000 (1µg/ml). Detection: DAB.

Immunohistochemistry (Formalin/PFA-fixed paraffin-embedded sections) - Anti-KAT8 / MYST1 / MOF antibody (ab72056)



Detection of Human KAT8 / MYST1 / MOF by Immunoprecipitation in Whole cell lysate from HeLa cells (1 mg for IP, 20% of IP loaded) using ab72056 at 3 µg/mg lysate. Subsequent WB detection was done using ab72056 at 1 µg/ml.

Immunoprecipitation - Anti-KAT8 / MYST1 / MOF antibody (ab72056)



Immunohistochemistry (Formalin/PFA-fixed paraffin-embedded sections) - Anti-KAT8 / MYST1 / MOF antibody (ab72056)

IHC image of ab72056 staining in human normal cervix formalin fixed paraffin embedded tissue section, performed on a Leica Bond™ system using the standard protocol F. The section was pre-treated using heat mediated antigen retrieval with EDTA (pH9, epitope retrieval solution 2) for 20 mins. The section was then incubated with ab72056, 5µg/ml, for 15 mins at room temperature and detected using an HRP conjugated compact polymer system. DAB was used as the chromogen. The section was then counterstained with haematoxylin and mounted with DPX.

For other IHC staining systems (automated and non-automated) customers should optimize variable parameters such as antigen retrieval conditions, primary antibody concentration and antibody incubation times.

Please note: All products are "FOR RESEARCH USE ONLY. NOT FOR USE IN DIAGNOSTIC PROCEDURES"

Our Abpromise to you: Quality guaranteed and expert technical support

- Replacement or refund for products not performing as stated on the datasheet
- Valid for 12 months from date of delivery
- Response to your inquiry within 24 hours
- We provide support in Chinese, English, French, German, Japanese and Spanish
- Extensive multi-media technical resources to help you
- We investigate all quality concerns to ensure our products perform to the highest standards

If the product does not perform as described on this datasheet, we will offer a refund or replacement. For full details of the Abpromise, please visit <https://www.abcam.co.jp/abpromise> or contact our technical team.

Terms and conditions

- Guarantee only valid for products bought direct from Abcam or one of our authorized distributors