

Anti-KAT2/AadAT antibody ab89608

★★★★★ **2 Abreviews** [画像数 2](#)

製品の概要

製品名	Anti-KAT2/AadAT antibody
製品の詳細	Mouse polyclonal to KAT2/AadAT
由来種	Mouse
アプリケーション	適用あり: WB
種交差性	交差種: Human
免疫原	Recombinant full length protein. This information is proprietary to Abcam and/or its suppliers.
ポジティブ・コントロール	Human liver lysate, KAT2/AadAT transfected 293T cell lysate
特記事項	<p>The Life Science industry has been in the grips of a reproducibility crisis for a number of years. Abcam is leading the way in addressing this with our range of recombinant monoclonal antibodies and knockout edited cell lines for gold-standard validation. Please check that this product meets your needs before purchasing.</p> <p>If you have any questions, special requirements or concerns, please send us an inquiry and/or contact our Support team ahead of purchase. Recommended alternatives for this product can be found below, along with publications, customer reviews and Q&As</p>

製品の特性

製品の状態	Liquid
保存方法	Shipped at 4°C. Upon delivery aliquot and store at -20°C or -80°C. Avoid repeated freeze / thaw cycles.
バッファー	pH: 7.40 Constituent: 100% PBS
精製度	Protein A purified
ポリ/モノ	ポリクローナル
アイソタイプ	IgG

アプリケーション

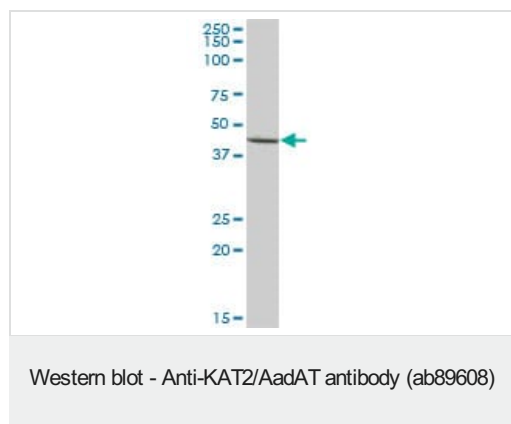
The Abpromise guarantee **Abpromise保証は、**次のテスト済みアプリケーションにおけるab89608の使用に適用されます
アプリケーションノートには、推奨の開始希釈率がありますが、適切な希釈率につきましてはご検討ください。

アプリケーション	Abreviews	特記事項
WB	★★★★★ (2)	Use a concentration of 1 µg/ml. Predicted molecular weight: 47 kDa.

ターゲット情報

機能	Transaminase with broad substrate specificity. Has transaminase activity towards aminoadipate, kynurenine, methionine and glutamate. Shows activity also towards tryptophan, aspartate and hydroxykynurenine. Accepts a variety of oxo-acids as amino-group acceptors, with a preference for 2-oxoglutarate, 2-oxocaproic acid, phenylpyruvate and alpha-oxo-gamma-methiol butyric acid. Can also use glyoxylate as amino-group acceptor (in vitro).
組織特異性	Higher expression in the liver. Also found in heart, brain, kidney, pancreas, prostate, testis and ovary.
パスウェイ	Amino-acid degradation; L-lysine degradation via saccharopine pathway; glutaryl-CoA from L-lysine: step 4/6.
配列類似性	Belongs to the class-I pyridoxal-phosphate-dependent aminotransferase family.
細胞内局在	Mitochondrion.

画像

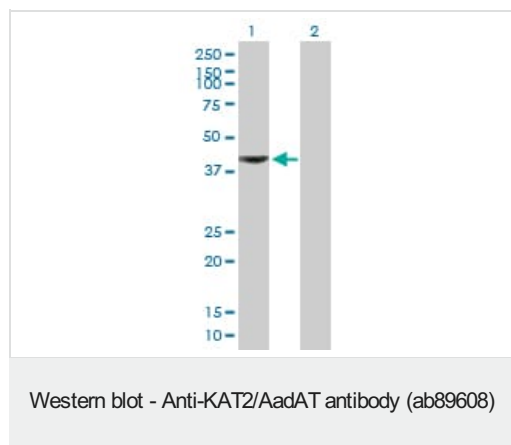


Anti-KAT2/AadAT antibody (ab89608) at 1 µg/ml + Human liver lysate at 50 µg

Developed using the ECL technique.

Predicted band size: 47 kDa

Observed band size: 44 kDa



All lanes : Anti-KAT2/AadAT antibody (ab89608) at 1 µg/ml

Lane 1 : KAT2/AadAT transfected 293T cell lysate

Lane 2 : Non-transfected 293T cell lysate

Lysates/proteins at 25 µg per lane.

Developed using the ECL technique.

Predicted band size: 47 kDa

Observed band size: 42 kDa

Please note: All products are "FOR RESEARCH USE ONLY. NOT FOR USE IN DIAGNOSTIC PROCEDURES"

Our Abpromise to you: Quality guaranteed and expert technical support

- Replacement or refund for products not performing as stated on the datasheet
- Valid for 12 months from date of delivery
- Response to your inquiry within 24 hours

- We provide support in Chinese, English, French, German, Japanese and Spanish
- Extensive multi-media technical resources to help you
- We investigate all quality concerns to ensure our products perform to the highest standards

If the product does not perform as described on this datasheet, we will offer a refund or replacement. For full details of the Abpromise, please visit <https://www.abcam.co.jp/abpromise> or contact our technical team.

Terms and conditions

- Guarantee only valid for products bought direct from Abcam or one of our authorized distributors