


Anti-KAP1 (phospho S824) antibody ab84077

2 References [画像数 2](#)

製品の概要

製品名	Anti-KAP1 (phospho S824) antibody
製品の詳細	Rabbit polyclonal to KAP1 (phospho S824)
由来種	Rabbit
アプリケーション	適用あり: ICC/IF
種交差性	交差種: Human 交差が予測される動物種: Chimpanzee, Rhesus monkey, Gorilla, Orangutan 
免疫原	Synthetic peptide corresponding to Human KAP1 (phospho S824).
ポジティブ・コントロール	Neocarzinostatin treated asynchronous HeLa cells. Untreated asynchronous HeLa cells.
特記事項	<p>Concentration is optimized for IHC and not determined</p> <p>The Life Science industry has been in the grips of a reproducibility crisis for a number of years. Abcam is leading the way in addressing this with our range of recombinant monoclonal antibodies and knockout edited cell lines for gold-standard validation. Please check that this product meets your needs before purchasing.</p> <p>If you have any questions, special requirements or concerns, please send us an inquiry and/or contact our Support team ahead of purchase. Recommended alternatives for this product can be found below, along with publications, customer reviews and Q&As</p>

製品の特性

製品の状態	Liquid
保存方法	Shipped at 4°C. Upon delivery aliquot and store at -20°C. Avoid freeze / thaw cycles.
バッファー	<p>pH: 6.8</p> <p>Preservative: 0.09% Sodium azide</p> <p>Constituents: 0.1% BSA, Tris buffered saline</p>
精製度	Immunogen affinity purified
ポリ/モノ	ポリクローナル
アイソタイプ	IgG

アプリケーション

The Abpromise guarantee

Abpromise保証は、次のテスト済みアプリケーションにおけるab84077の使用に適用されます

アプリケーションノートには、推奨の開始希釈率がありますが、適切な希釈率につきましてはご検討ください。

アプリケーション	Abreviews	特記事項
ICC/IF		

追加情報

ICC/IF: 1/100 - 1/500. Permeabilization with Triton-X 100 is recommended.

Likely to work with frozen sections.

Not yet tested in other applications.

Optimal dilutions/concentrations should be determined by the end user.

ターゲット情報

機能

Nuclear corepressor for KRAB domain-containing zinc finger proteins (KRAB-ZFPs). Mediates gene silencing by recruiting CHD3, a subunit of the nucleosome remodeling and deacetylation (NuRD) complex, and SETDB1 (which specifically methylates histone H3 at 'Lys-9' (H3K9me)) to the promoter regions of KRAB target genes. Enhances transcriptional repression by coordinating the increase in H3K9me, the decrease in histone H3 'Lys-9 and 'Lys-14' acetylation (H3K9ac and H3K14ac, respectively) and the disposition of HP1 proteins to silence gene expression. Recruitment of SETDB1 induces heterochromatinization. May play a role as a coactivator for CEBPB and NR3C1 in the transcriptional activation of ORM1. Also corepressor for ERBB4. Inhibits E2F1 activity by stimulating E2F1-HDAC1 complex formation and inhibiting E2F1 acetylation. May serve as a partial backup to prevent E2F1-mediated apoptosis in the absence of RB1. Important regulator of CDKN1A/p21(CIP1). Has E3 SUMO-protein ligase activity toward itself via its PHD-type zinc finger.

組織特異性

Expressed in all tissues tested including spleen, thymus, prostate, testis, ovary, small intestine, colon and peripheral blood leukocytes.

パスウェイ

Protein modification; protein sumoylation.

配列類似性

Belongs to the TRIM/RBCC family.
Contains 2 B box-type zinc fingers.
Contains 1 bromo domain.
Contains 1 PHD-type zinc finger.
Contains 1 RING-type zinc finger.

ドメイン

The HP1 box is both necessary and sufficient for HP1 binding.
The PHD-type zinc finger enhances CEBPB transcriptional activity. The PHD-type zinc finger, the HP1 box and the bromo domain, function together to assemble the machinery required for repression of KRAB domain-containing proteins. Acts as an intramolecular SUMO E3 ligase for autosumoylation of bromodomain.
The RING-finger-B Box-coiled-coil/tripartite motif (RBCC/TRIM motif) is required for interaction with the KRAB domain of KRAB-zinc finger proteins. Binds four zinc ions per molecule. The RING finger and the N-terminal of the leucine zipper alpha helical coiled-coil region of RBCC are required for oligomerization.
Contains one Pro-Xaa-Val-Xaa-Leu (PxVxL) motif, which is required for interaction with chromoshadow domains. This motif requires additional residues -7, -6, +4 and +5 of the central Val which contact the chromoshadow domain.

翻訳後修飾

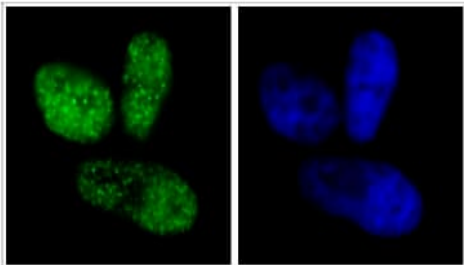
Phosphorylated upon DNA damage, probably by ATM or ATR. ATM-induced phosphorylation on Ser-824 represses sumoylation leading to the de-repression of expression of a subset of genes involved in cell cycle control and apoptosis in response to genotoxic stress. Dephosphorylation by the phosphatases, PPP1CA and PP1CB forms, allows sumoylation and expression of TRIM28 target genes.

Sumoylation/desumoylation events regulate TRIM28-mediated transcriptional repression. Sumoylation is required for interaction with CHD3 and SETDB1 and the corepressor activity. Represses and is repressed by Ser-824 phosphorylation. Enhances the TRIM28 corepressor activity, inhibiting transcriptional activity of a number of genes including GADD45A and CDKN1A/p21. Lys-554, Lys-779 and Lys-804 are the major sites of sumoylation. In response to Dox-induced DNA damage, enhanced phosphorylation on Ser-824 prevents sumoylation and allows de-repression of CDKN1A/p21.

細胞内局在

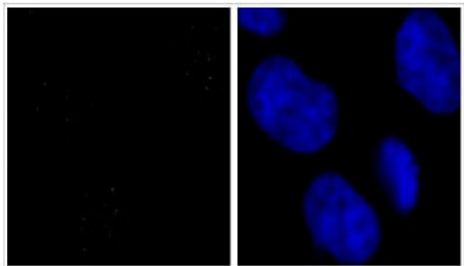
Nucleus. Associated with centromeric heterochromatin during cell differentiation through CBX1.

画像



Immunocytochemistry/ Immunofluorescence - Anti-KAP1 (phospho S824) antibody (ab84077)

ab84077 at 1/250 dilution staining KIP1 in Neocarzinostatin treated asynchronous HeLa cells by Immunocytochemistry / Immunofluorescence. A FITC conjugated anti rabbit used at a dilution of 1/100 as secondary.



Immunocytochemistry/ Immunofluorescence - Anti-KAP1 (phospho S824) antibody (ab84077)

Detection of Human Phospho KAP1 (S824) by Immunocytochemistry.

Samples: Untreated asynchronous HeLa cells (formaldehyde fixation).

Antibody: ab84077 used at a dilution of 1/250.

Detection: Anti-rabbit IgG-FITC conjugated used at a dilution of 1/100.

Please note: All products are "FOR RESEARCH USE ONLY. NOT FOR USE IN DIAGNOSTIC PROCEDURES"

Our Abpromise to you: Quality guaranteed and expert technical support

- Replacement or refund for products not performing as stated on the datasheet
- Valid for 12 months from date of delivery

- Response to your inquiry within 24 hours
- We provide support in Chinese, English, French, German, Japanese and Spanish
- Extensive multi-media technical resources to help you
- We investigate all quality concerns to ensure our products perform to the highest standards

If the product does not perform as described on this datasheet, we will offer a refund or replacement. For full details of the Abpromise, please visit <https://www.abcam.co.jp/abpromise> or contact our technical team.

Terms and conditions

- Guarantee only valid for products bought direct from Abcam or one of our authorized distributors