

Anti-KANK2 antibody ab99351

★★★★★ **1 Abreviews** 画像数 3

製品の概要

製品名	Anti-KANK2 antibody
製品の詳細	Rabbit polyclonal to KANK2
由来種	Rabbit
アプリケーション	適用あり: WB, IP, IHC-P
種交差性	交差種: Human 交差が予測される動物種: Chimpanzee, Rhesus monkey, Gorilla, Orangutan 
免疫原	Synthetic peptide corresponding to Human KANK2 aa 550-650. Database link: Q63ZY3
ポジティブ・コントロール	HeLa whole cell lysate (ab150035)
特記事項	<p>The Life Science industry has been in the grips of a reproducibility crisis for a number of years. Abcam is leading the way in addressing this with our range of recombinant monoclonal antibodies and knockout edited cell lines for gold-standard validation. Please check that this product meets your needs before purchasing.</p> <p>If you have any questions, special requirements or concerns, please send us an inquiry and/or contact our Support team ahead of purchase. Recommended alternatives for this product can be found below, along with publications, customer reviews and Q&As</p>

製品の特性

製品の状態	Liquid
保存方法	Shipped at 4°C. Upon delivery aliquot and store at -20°C. Avoid freeze / thaw cycles.
バッファー	pH: 7 Preservative: 0.09% Sodium azide Constituents: PBS, Tris buffered saline
精製度	Immunogen affinity purified
ポリ/モノ	ポリクローナル
アイソタイプ	IgG

アプリケーション

The Abpromise guarantee Abpromise保証は、 次のテスト済みアプリケーションにおけるab99351の使用に適用されます
アプリケーションノートには、推奨の開始希釈率がありますが、適切な希釈率につきましてはご検討ください。

The Abpromise guarantee Abpromise保証は、 次のテスト済みアプリケーションにおけるab99351の使用に適用されます
アプリケーションノートには、推奨の開始希釈率がありますが、適切な希釈率につきましてはご検討ください。

The Abpromise guarantee Abpromise保証は、 次のテスト済みアプリケーションにおけるab99351の使用に適用されます
アプリケーションノートには、推奨の開始希釈率がありますが、適切な希釈率につきましてはご検討ください。

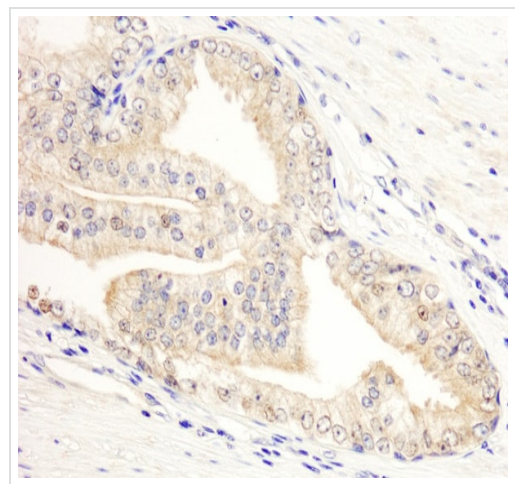
アプリケーション	Abreviews	特記事項
WB	★★★★★ (1)	1/2000 - 1/10000. Predicted molecular weight: 91 kDa.
IP		Use a concentration of 2 - 5 µg/ml.
IHC-P		1/500 - 1/2000. Perform heat mediated antigen retrieval with citrate buffer pH 6 before commencing with IHC staining protocol.

ターゲット情報

関連性 KANK2 contains 5 ANK repeats. It is strongly expressed in cervix, colon, heart, kidney and lung.

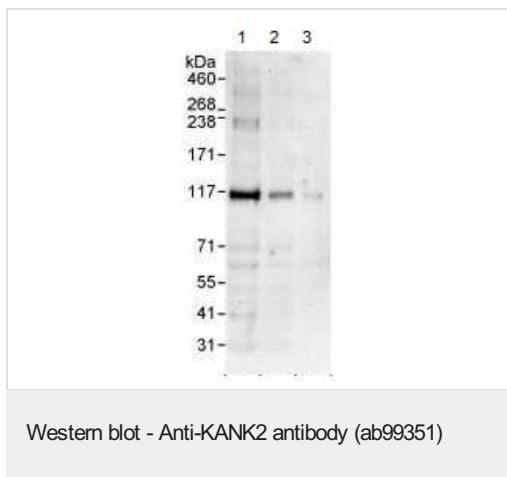
細胞内局在 Cytoplasm. Mitochondrion.

画像



Immunohistochemistry (Formalin/PFA-fixed paraffin-embedded sections) analysis of human prostate carcinoma tissue labelling KANK2 with ab99351 at 1/1000 (1µg/ml). Detection: DAB.

Immunohistochemistry (Formalin/PFA-fixed paraffin-embedded sections) - Anti-KANK2 antibody (ab99351)



All lanes : Anti-KANK2 antibody (ab99351) at 0.1 µg/ml

Lane 1 : HeLa whole cell lysate at 50 µg

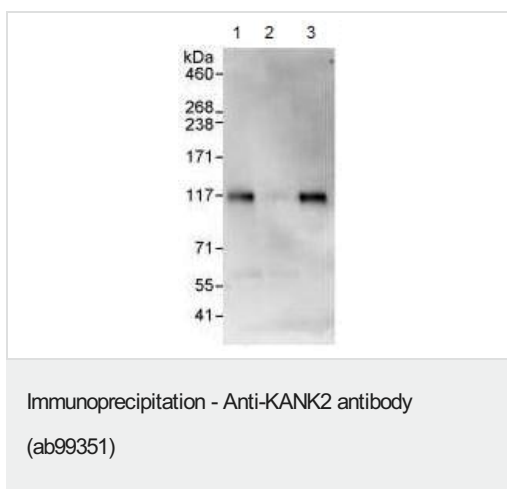
Lane 2 : HeLa whole cell lysate at 15 µg

Lane 3 : HeLa whole cell lysate at 5 µg

Developed using the ECL technique.

Predicted band size: 91 kDa

Exposure time: 3 minutes



Detection of Human KANK2 by Western Blot and

Immunoprecipitation. Samples: Whole cell lysate from HeLa cells (1 mg for IP, 20% of IP loaded). ab99351 used for WB at 1 µg/ml and used for IP at 3 µg/mg lysate (lane 1). KANK2 was also immunoprecipitated by another rabbit anti-KANK2 antibody (lane 2) and control IgG (lane 3). Detection Chemiluminescence with exposure times of 30 seconds.

Please note: All products are "FOR RESEARCH USE ONLY. NOT FOR USE IN DIAGNOSTIC PROCEDURES"

Our Abpromise to you: Quality guaranteed and expert technical support

- Replacement or refund for products not performing as stated on the datasheet
- Valid for 12 months from date of delivery
- Response to your inquiry within 24 hours
- We provide support in Chinese, English, French, German, Japanese and Spanish
- Extensive multi-media technical resources to help you
- We investigate all quality concerns to ensure our products perform to the highest standards

If the product does not perform as described on this datasheet, we will offer a refund or replacement. For full details of the Abpromise, please visit <https://www.abcam.co.jp/abpromise> or contact our technical team.

Terms and conditions

- Guarantee only valid for products bought direct from Abcam or one of our authorized distributors