


# Anti-kan antibody [4B4D1] ab60018

[1 Abreviews](#) [11 References](#) [画像数 1](#)

### 製品の概要

製品名	Anti-kan antibody [4B4D1]
製品の詳細	Mouse monoclonal [4B4D1] to kan
由来種	Mouse
アプリケーション	<b>適用あり:</b> ELISA, WB
種交差性	<b>交差種:</b> Recombinant fragment <b>交差が予測される動物種:</b> Escherichia coli 
免疫原	Recombinant full length protein corresponding to kan.
特記事項	<p>The Life Science industry has been in the grips of a reproducibility crisis for a number of years. Abcam is leading the way in addressing this with our range of recombinant monoclonal antibodies and knockout edited cell lines for gold-standard validation. Please check that this product meets your needs before purchasing.</p> <p>If you have any questions, special requirements or concerns, please send us an inquiry and/or contact our Support team ahead of purchase. Recommended alternatives for this product can be found below, along with publications, customer reviews and Q&amp;As</p>

### 製品の特性

製品の状態	Liquid
保存方法	Shipped at 4°C. Upon delivery aliquot and store at -20°C or -80°C. Avoid repeated freeze / thaw cycles.
バッファー	pH: 7.2
精製度	Protein A purified
ポリ/モノ	モノクローナル
クローン名	4B4D1
アイソタイプ	IgG2a

### アプリケーション

The Abpromise guarantee

**Abpromise保証は、次のテスト済みアプリケーションにおけるab60018の使用に適用されます**

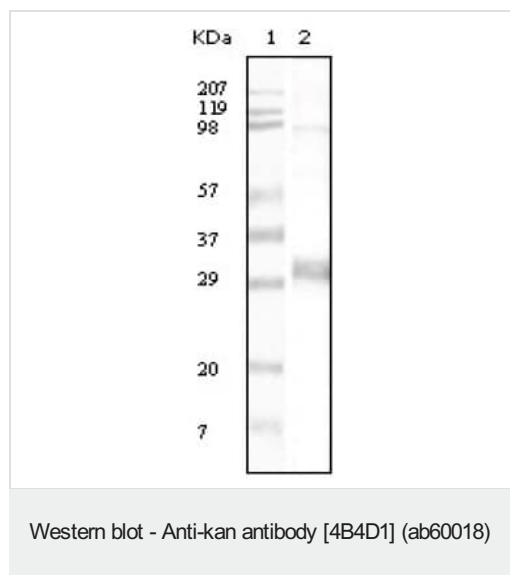
アプリケーションノートには、推奨の開始希釈率がありますが、適切な希釈率につきましてはご確認ください。

アプリケーション	Abreviews	特記事項
ELISA		Use at an assay dependent concentration.
WB		1/500 - 1/2000. Detects a band of approximately 30 kDa (predicted molecular weight: 29 kDa).

## ターゲット情報

**関連性** Neomycin Phosphotransferase 2 (kan) confers resistance to kanamycin and neomycin in bacteria and G418 (Geneticin®, G418 Sulfate) in mammalian cells. These antibiotics bind to ribosomal components and inhibit protein synthesis. NPT II inhibits these antibiotics through phosphorylation, which is thought to interfere with their active transport into the cell. Immunoblot analysis of transfected cell lysates with anti NPT II can be used to gauge relative transfection efficiencies in experiments where multiple transfections are performed in parallel with different plasmids.

## 画像



Anti-kan antibody [4B4D1] (ab60018) at 1/500 dilution +  
Recombinant kan expressed in E. coli.

**Predicted band size:** 29 kDa

**Observed band size:** 30 kDa

**Please note:** All products are "FOR RESEARCH USE ONLY. NOT FOR USE IN DIAGNOSTIC PROCEDURES"

## Our Abpromise to you: Quality guaranteed and expert technical support

- Replacement or refund for products not performing as stated on the datasheet
- Valid for 12 months from date of delivery
- Response to your inquiry within 24 hours
- We provide support in Chinese, English, French, German, Japanese and Spanish
- Extensive multi-media technical resources to help you
- We investigate all quality concerns to ensure our products perform to the highest standards

If the product does not perform as described on this datasheet, we will offer a refund or replacement. For full details of the Abpromise, please visit <https://www.abcam.co.jp/abpromise> or contact our technical team.

#### **Terms and conditions**

---

- Guarantee only valid for products bought direct from Abcam or one of our authorized distributors