

Anti-KACL antibody ab76711

画像数 1

製品の概要

製品名	Anti-KACL antibody
製品の詳細	Rabbit polyclonal to KACL
由来種	Rabbit
アプリケーション	適用あり: WB
種交差性	交差種: Human
免疫原	Synthetic peptide corresponding to Human KACL aa 50-150 conjugated to keyhole limpet haemocyanin. (Peptide available as ab103565)
ポジティブ・コントロール	This antibody gave a positive signal in the following lysates: Human Spleen Tissue; Human Thymus Tissue; Human Small Intestine Tissue; Human Bone Marrow Tissue; Raji Whole Cell; Jurkat Whole Cell; MOLT4 Whole Cell.
特記事項	<p>The Life Science industry has been in the grips of a reproducibility crisis for a number of years. Abcam is leading the way in addressing this with our range of recombinant monoclonal antibodies and knockout edited cell lines for gold-standard validation. Please check that this product meets your needs before purchasing.</p> <p>If you have any questions, special requirements or concerns, please send us an inquiry and/or contact our Support team ahead of purchase. Recommended alternatives for this product can be found below, along with publications, customer reviews and Q&As</p>

製品の特性

製品の状態	Liquid
保存方法	Shipped at 4°C. Store at +4°C short term (1-2 weeks). Upon delivery aliquot. Store at -20°C or -80°C. Avoid freeze / thaw cycle.
バッファー	<p>pH: 7.40</p> <p>Preservative: 0.02% Sodium azide</p> <p>Constituent: PBS</p> <p>Batches of this product that have a concentration < 1mg/ml may have BSA added as a stabilising agent. If you would like information about the formulation of a specific lot, please contact our scientific support team who will be happy to help.</p>
精製度	Immunogen affinity purified

アイソタイプ

lgG

アプリケーション

アプリケーションノートには、推奨の開始希釈率がありますが、適切な希釈率につきましてはご検討ください。

アプリケーション	Abreviews	特記事項
WB		Use a concentration of 1 µg/ml. Detects a band of approximately 32 kDa (predicted molecular weight: 20 kDa).

ターゲット情報

Plays a role in modulating the extent of T-cell expansion. Enhances the expansion of TCR-stimulated T cells by increasing their survival through enhanced expression of anti-apoptotic proteins. May modulate the capacity of T-cells to home to lymph nodes through SELL. Facilitates dedicated immune recognition of keratinocytes via interaction with its receptor KLRF2 by stimulating natural killer cell mediated cytotoxicity.

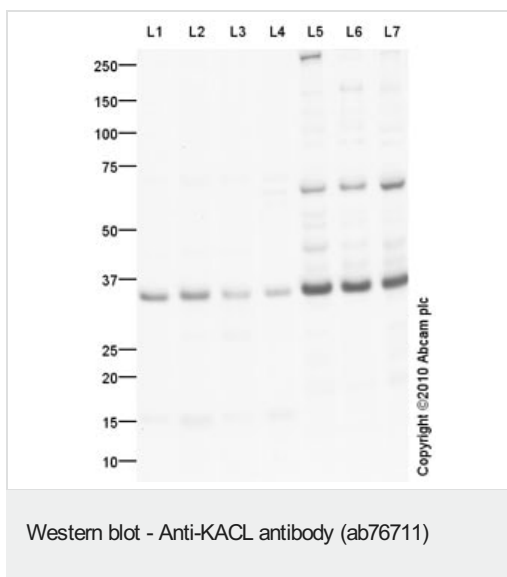
Mainly expressed in skin. Also expressed in keratinocytes, spleen, thymus, small intestine, peripheral blood monocytes, bone marrow, ovary, testis and skin. High expression in CD8(+), B lymphocytes and naive CD4(+) T cells. Restricted mostly to proliferating lymphocytes. Not detected in myeloid leukocytes or natural killer (NK) cells.

Contains 1 C-type lectin domain.

N-glycosylated.

Cell membrane.

画像



All lanes : Anti-KACL antibody (ab76711) at 1 μ g/ml

Lane 1 : Human spleen tissue lysate - total protein ([ab29699](#))

Lane 2 : Human thymus tissue lysate - total protein (**ab30146**)

Lane 3 : Human small intestine tissue lysate - total protein (ab29276)

Lane 4 : Bone Marrow (Human) Tissue Lysate - adult normal tissue

Lane 5 : Raji (Human Burkitt's lymphoma cell line) Whole Cell Lysate

Lane 6 : Jurkat (Human T cell lymphoblast-like cell line) Whole Cell Lysate

Lane 7 : MOLT4 (Human acute lymphoblastic leukemia cell line)

Whole Cell Lysate

Lysates/proteins at 10 µg per lane.

Secondary

All lanes : Goat Anti-Rabbit IgG H&L (HRP) preadsorbed
([ab97080](#)) at 1/5000 dilution

Developed using the ECL technique.

Performed under reducing conditions.

Predicted band size: 20 kDa

Observed band size: 32 kDa

Additional bands at: 300 kDa, 65 kDa. We are unsure as to the identity of these extra bands.

Exposure time: 4 minutes

KACL contains a potential glycosylation site (SwissProt), which may explain its migration at a higher molecular weight than predicted. The band at 32-kDa is consistent with what has been reported in the literature (PMID:16174766).

Please note: All products are "FOR RESEARCH USE ONLY. NOT FOR USE IN DIAGNOSTIC PROCEDURES"

Our Abpromise to you: Quality guaranteed and expert technical support

- Replacement or refund for products not performing as stated on the datasheet
- Valid for 12 months from date of delivery
- Response to your inquiry within 24 hours
- We provide support in Chinese, English, French, German, Japanese and Spanish
- Extensive multi-media technical resources to help you
- We investigate all quality concerns to ensure our products perform to the highest standards

If the product does not perform as described on this datasheet, we will offer a refund or replacement. For full details of the Abpromise, please visit <https://www.abcam.co.jp/abpromise> or contact our technical team.

Terms and conditions

- Guarantee only valid for products bought direct from Abcam or one of our authorized distributors