

Anti-KA1 antibody ab67402

★★★★★ [2 Abreviews](#) [1 References](#) [画像数 1](#)

製品の概要

製品名	Anti-KA1 antibody
製品の詳細	Rabbit polyclonal to KA1
由来種	Rabbit
アプリケーション	適用あり: WB
種交差性	交差種: Rat
免疫原	Synthetic peptide corresponding to Mouse KA1 aa 1-18 (C terminal). An 18 amino acid synthetic peptide near the carboxy terminus of the mouse Grik4. (Peptide available as ab209614)
ポジティブ・コントロール	Rat brain lysate
特記事項	<p>The Life Science industry has been in the grips of a reproducibility crisis for a number of years. Abcam is leading the way in addressing this with our range of recombinant monoclonal antibodies and knockout edited cell lines for gold-standard validation. Please check that this product meets your needs before purchasing.</p> <p>If you have any questions, special requirements or concerns, please send us an inquiry and/or contact our Support team ahead of purchase. Recommended alternatives for this product can be found below, along with publications, customer reviews and Q&As</p>

製品の特性

製品の状態	Liquid
保存方法	Shipped at 4°C. Store at +4°C short term (1-2 weeks). Allow to warm to room temp and agitate gently before aliquotting. Store at -20°C. Avoid freeze / thaw cycle.
バッファー	pH: 7.2 Preservative: 0.02% Sodium azide Constituent: PBS
精製度	Immunogen affinity purified
ポリ/モノ	ポリクローナル
アイソタイプ	IgG

アプリケーション

The Abpromise guarantee

Abpromise保証は、次のテスト済みアプリケーションにおけるab67402の使用に適用されます

アプリケーションノートには、推奨の開始希釈率がありますが、適切な希釈率につきましてはご確認ください。

アプリケーション	Abreviews	特記事項
WB	★★★★★ (1)	

追加情報

IHC-P: Use at a concentration of 2.5 µg/ml.

WB: Use at a concentration of 0.5 - 2 µg/ml. Detects a band of approximately <97 kDa (predicted molecular weight: 108 kDa).

N.B. KA1 often migrates at a lower molecular weight in SDS-PAGE.

Not yet tested in other applications.

Optimal dilutions/concentrations should be determined by the end user.

ターゲット情報

機能

Receptor for glutamate. L-glutamate acts as an excitatory neurotransmitter at many synapses in the central nervous system. The postsynaptic actions of Glu are mediated by a variety of receptors that are named according to their selective agonists.

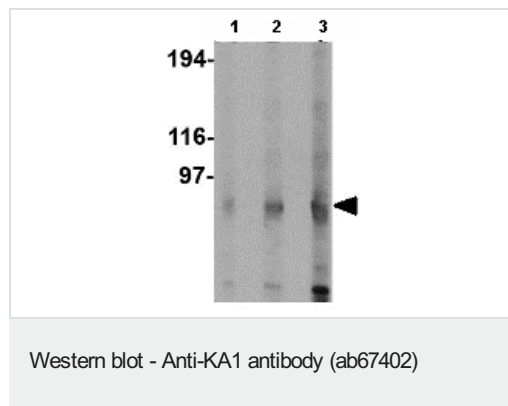
配列類似性

Belongs to the glutamate-gated ion channel (TC 1.A.10.1) family. GRIK4 subfamily.

細胞内局在

Cell membrane. Cell junction > synapse > postsynaptic cell membrane.

画像



Lane 1 : Anti-KA1 antibody (ab67402) at 0.5 µg/ml

Lane 2 : Anti-KA1 antibody (ab67402) at 1 µg/ml

Lane 3 : Anti-KA1 antibody (ab67402) at 2 µg/ml

All lanes : Rat brain lysate

Lysates/proteins at 15 µg per lane.

Predicted band size: 108 kDa

Observed band size: <97 kDa

N.B. KA1 often migrates at a lower molecular weight in SDS-PAGE.

Please note: All products are "FOR RESEARCH USE ONLY. NOT FOR USE IN DIAGNOSTIC PROCEDURES"

Our Abpromise to you: Quality guaranteed and expert technical support

- Replacement or refund for products not performing as stated on the datasheet
- Valid for 12 months from date of delivery
- Response to your inquiry within 24 hours

- We provide support in Chinese, English, French, German, Japanese and Spanish
- Extensive multi-media technical resources to help you
- We investigate all quality concerns to ensure our products perform to the highest standards

If the product does not perform as described on this datasheet, we will offer a refund or replacement. For full details of the Abpromise, please visit <https://www.abcam.co.jp/abpromise> or contact our technical team.

Terms and conditions

- Guarantee only valid for products bought direct from Abcam or one of our authorized distributors