


Anti-K84 antibody ab230636

画像数 2

製品の概要

製品名	Anti-K84 antibody
製品の詳細	Rabbit polyclonal to K84
由来種	Rabbit
アプリケーション	適用あり: WB, IHC-P
種交差性	交差種: Mouse, Rat, Human 交差が予測される動物種: Monkey 
免疫原	Synthetic peptide corresponding to Human K84 (internal sequence) conjugated to keyhole limpet haemocyanin. Database link: Q9NSB2
ポジティブ・コントロール	WB: THP-1, RAW 264.7 and PC-12 whole cell lysates. IHC-P: Human hair follicle tissue.
特記事項	<p>The Life Science industry has been in the grips of a reproducibility crisis for a number of years. Abcam is leading the way in addressing this with our range of recombinant monoclonal antibodies and knockout edited cell lines for gold-standard validation. Please check that this product meets your needs before purchasing.</p> <p>If you have any questions, special requirements or concerns, please send us an inquiry and/or contact our Support team ahead of purchase. Recommended alternatives for this product can be found below, along with publications, customer reviews and Q&As</p>

製品の特性

製品の状態	Liquid
保存方法	Shipped at 4°C. Store at +4°C short term (1-2 weeks). Upon delivery aliquot. Store at -20°C long term. Avoid freeze / thaw cycle.
バッファー	pH: 7.30 Preservative: 0.01% Sodium azide Constituents: PBS, 30% Glycerol (glycerin, glycerine)
精製度	Immunogen affinity purified
ポリ/モノ	ポリクローナル
アイソタイプ	IgG

アプリケーション

The Abpromise guarantee Abpromise保証は、 次のテスト済みアプリケーションにおけるab230636の使用に適用されます
アプリケーションノートには、推奨の開始希釈率がありますが、適切な希釈率につきましてはご検討ください。

アプリケーション	Abreviews	特記事項
WB		1/500 - 1/1000. Predicted molecular weight: 65 kDa.
IHC-P		1/100.

ターゲット情報

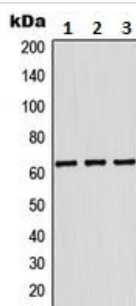
組織特異性	Expressed in the hair follicles.
配列類似性	Belongs to the intermediate filament family.

画像



Immunohistochemistry (Formalin/PFA-fixed paraffin-embedded sections) - Anti-K84 antibody (ab230636)

Formalin-fixed, paraffin-embedded human hair follicle tissue stained for K84 using ab230636 at 1/100 dilution in immunohistochemical analysis.



Western blot - Anti-K84 antibody (ab230636)

All lanes : Anti-K84 antibody (ab230636) at 1/500 dilution

Lane 1 : THP-1 (human monocytic leukemia cell line) whole cell lysate

Lane 2 : RAW 264.7 (mouse macrophage cell line transformed with Abelson murine leukemia virus) whole cell lysate

Lane 3 : PC-12 (rat adrenal gland pheochromocytoma cell line) whole cell lysate

Predicted band size: 65 kDa

Our Abpromise to you: Quality guaranteed and expert technical support

- Replacement or refund for products not performing as stated on the datasheet
- Valid for 12 months from date of delivery
- Response to your inquiry within 24 hours

- We provide support in Chinese, English, French, German, Japanese and Spanish
- Extensive multi-media technical resources to help you
- We investigate all quality concerns to ensure our products perform to the highest standards

If the product does not perform as described on this datasheet, we will offer a refund or replacement. For full details of the Abpromise, please visit <https://www.abcam.co.jp/abpromise> or contact our technical team.

Terms and conditions

- Guarantee only valid for products bought direct from Abcam or one of our authorized distributors