

# Anti-Junctional Adhesion Molecule 1/JAM-A antibody [EP1042Y] ab52647

KO 評価済 リコンビナント RabMAb

★★★★★ 3 Abreviews 24 References 画像数 6

### 製品の概要

製品名	Anti-Junctional Adhesion Molecule 1/JAM-A antibody [EP1042Y]
製品の詳細	Rabbit monoclonal [EP1042Y] to Junctional Adhesion Molecule 1/JAM-A
由来種	Rabbit
アプリケーション	適用あり: WB, IHC-P 適用なし: ICC/IF
種交差性	交差種: Human
免疫原	Synthetic peptide within Human Junctional Adhesion Molecule 1/JAM-A aa 1-100. The exact sequence is proprietary.
ポジティブ・コントロール	Hela cell lysate and human liver tissue.
特記事項	This product is a recombinant monoclonal antibody, which offers several advantages including: <ul style="list-style-type: none"> <li>- High batch-to-batch consistency and reproducibility</li> <li>- Improved sensitivity and specificity</li> <li>- Long-term security of supply</li> <li>- Animal-free production</li> </ul> For more information <a href="#">see here</a> . Our RabMAb® technology is a patented hybridoma-based technology for making rabbit monoclonal antibodies. For details on our patents, please refer to <a href="#">RabMAb® patents</a> .

### 製品の特性

製品の状態	Liquid
保存方法	Shipped at 4°C. Store at +4°C short term (1-2 weeks). Upon delivery aliquot. Store at -20°C long term. Avoid freeze / thaw cycle.
バッファー	pH: 7.20 Preservative: 0.01% Sodium azide Constituents: PBS, 40% Glycerol (glycerin, glycerine), 0.21% BSA
精製度	Protein A purified
ポリ/モノ	モノクローナル

クローン名 EP1042Y  
アイソタイプ IgG

アプリケーション

The Abpromise guarantee      **Abpromise保証は、** 次のテスト済みアプリケーションにおけるab52647の使用に適用されます  
アプリケーションノートには、推奨の開始希釈率がありますが、適切な希釈率につきましてはご検討ください。

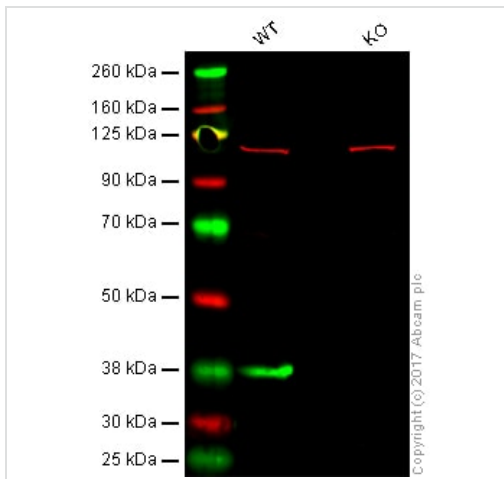
アプリケーション	Abreviews	特記事項
WB	★★★★★ (3)	1/1000 - 1/10000. Detects a band of approximately 33 kDa (predicted molecular weight: 33 kDa).
IHC-P		1/100 - 1/250. Perform heat mediated antigen retrieval with Tris/EDTA buffer pH 9.0 before commencing with IHC staining protocol.

追加情報      Is unsuitable for ICC/IF.

ターゲット情報

機能	Seems to plays a role in epithelial tight junction formation. Appears early in primordial forms of cell junctions and recruits PARD3. The association of the PARD6-PARD3 complex may prevent the interaction of PARD3 with JAM1, thereby preventing tight junction assembly (By similarity). Plays a role in regulating monocyte transmigration involved in integrity of epithelial barrier. Involved in platelet activation. In case of orthoreovirus infection, serves as receptor for the virus.
配列類似性	Belongs to the immunoglobulin superfamily. Contains 2 Ig-like V-type (immunoglobulin-like) domains.
翻訳後修飾	N-glycosylated.
細胞内局在	Cell junction > tight junction. Cell membrane. Localized at tight junctions of both epithelial and endothelial cells.

画像



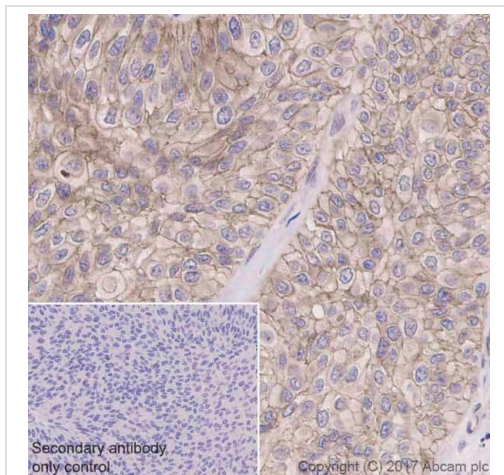
Western blot - Anti-Junctional Adhesion Molecule 1/JAM-A antibody [EP1042Y] (ab52647)

**Lane 1:** Wild-type HAP1 whole cell lysate (40 µg)

**Lane 2:** Junctional Adhesion Molecule 1/JAM-A knockout HAP1 whole cell lysate (40 µg)

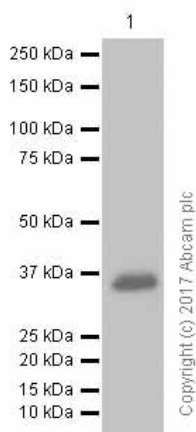
**Lanes 1 - 2:** Merged signal (red and green). Green - ab52647 observed at 32 kDa. Red - loading control, **ab18058**, observed at 130 kDa.

ab52647 was shown to specifically react with Junctional Adhesion Molecule 1/JAM-A in wild-type HAP1 cells as signal was lost in Junctional Adhesion Molecule 1 knockout cells. Wild-type and Junctional Adhesion Molecule 1/JAM-A knockout samples were subjected to SDS-PAGE. ab52647 and **ab18058** (Mouse anti-Vinculin loading control) were incubated overnight at 4°C at 1/1000 dilution and 1/20000 dilution respectively. Blots were developed with Goat anti-Rabbit IgG H&L (IRDye® 800CW) preabsorbed **ab216773** and Goat anti-Mouse IgG H&L (IRDye® 680RD) preabsorbed **ab216776** secondary antibodies at 1/20000 dilution for 1 hour at room temperature before imaging.



Immunohistochemistry (Formalin/PFA-fixed paraffin-embedded sections) - Anti-Junctional Adhesion Molecule 1/JAM-A antibody [EP1042Y] (ab52647)

Immunohistochemistry (Formalin/PFA-fixed paraffin-embedded sections) analysis of Human bladder carcinoma tissue sections labeling Junctional Adhesion Molecule 1/JAM-A with Purified ab52647 at 1:100 dilution (6.15 µg/ml). Heat mediated antigen retrieval was performed using **ab93684** (Tris/EDTA buffer, pH 9.0). Tissue was counterstained with Hematoxylin. ImmunoHistoProbe one step HRP Polymer (ready to use) secondary antibody was used at 1:0 dilution. PBS instead of the primary antibody was used as the negative control.



Western blot - Anti-Junctional Adhesion Molecule 1/JAM-A antibody [EP1042Y] (ab52647)

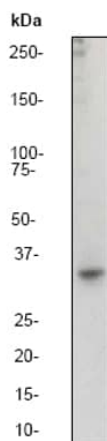
Anti-Junctional Adhesion Molecule 1/JAM-A antibody [EP1042Y] (ab52647) at 1/1000 dilution (purified) + TF-1 (Human Erythroleukemia erythroblast) whole cell lysates at 15 µg

### Secondary

Goat Anti-Rabbit IgG H&L (HRP) ([ab97051](#)) at 1/20000 dilution

**Predicted band size:** 33 kDa

Blocking and diluting buffer: 5% NFDM/TBST



Western blot - Anti-Junctional Adhesion Molecule 1/JAM-A antibody [EP1042Y] (ab52647)

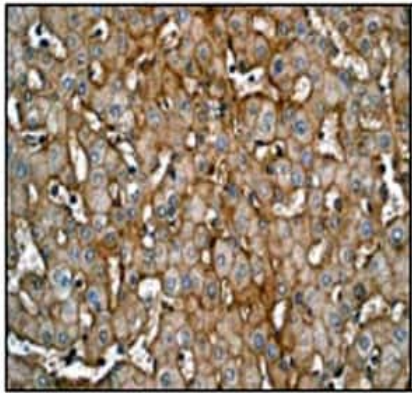
Anti-Junctional Adhesion Molecule 1/JAM-A antibody [EP1042Y] (ab52647) at 1/2000 dilution (unpurified) + Hela cell lysate at 10 µg

### Secondary

Goat anti-rabbit HRP labeled at 1/2000 dilution

**Predicted band size:** 33 kDa

**Observed band size:** 33 kDa



Immunohistochemical staining of paraffin-embedded human liver using unpurified ab52647 at a 1/100 dilution.

Immunohistochemistry (Formalin/PFA-fixed paraffin-embedded sections) - Anti-Junctional Adhesion Molecule 1/JAM-A antibody [EP1042Y] (ab52647)

#### Why choose a recombinant antibody?



**Research with confidence**  
Consistent and reproducible results



**Long-term and scalable supply**  
Recombinant technology



**Success from the first experiment**  
Confirmed specificity



**Ethical standards compliant**  
Animal-free production

Anti-Junctional Adhesion Molecule 1/JAM-A antibody [EP1042Y] (ab52647)

**Please note:** All products are "FOR RESEARCH USE ONLY. NOT FOR USE IN DIAGNOSTIC PROCEDURES"

#### Our Abpromise to you: Quality guaranteed and expert technical support

- Replacement or refund for products not performing as stated on the datasheet
- Valid for 12 months from date of delivery
- Response to your inquiry within 24 hours
- We provide support in Chinese, English, French, German, Japanese and Spanish

- Extensive multi-media technical resources to help you
- We investigate all quality concerns to ensure our products perform to the highest standards

If the product does not perform as described on this datasheet, we will offer a refund or replacement. For full details of the Abpromise, please visit <https://www.abcam.co.jp/abpromise> or contact our technical team.

#### **Terms and conditions**

---

- Guarantee only valid for products bought direct from Abcam or one of our authorized distributors