




Anti-Junctional Adhesion Molecule 1/JAM-A antibody ab91501

画像数 1

製品の概要

製品名	Anti-Junctional Adhesion Molecule 1/JAM-A antibody
製品の詳細	Goat polyclonal to Junctional Adhesion Molecule 1/JAM-A
由来種	Goat
アプリケーション	適用あり: WB
種交差性	交差種: Human 交差が予測される動物種: Mouse, Rat, Cat, Dog, Pig 
免疫原	Synthetic peptide corresponding to Human Junctional Adhesion Molecule 1/JAM-A aa 282-295 (C terminal). Sequence: C-QPSARSEGEFKQTS Database link: NP_058642.1 <div>  Run BLAST with  Run BLAST with </div>
ポジティブ・コントロール	Human peripheral blood mononucleocyte lysate
特記事項	<p>The Life Science industry has been in the grips of a reproducibility crisis for a number of years. Abcam is leading the way in addressing this with our range of recombinant monoclonal antibodies and knockout edited cell lines for gold-standard validation. Please check that this product meets your needs before purchasing.</p> <p>If you have any questions, special requirements or concerns, please send us an inquiry and/or contact our Support team ahead of purchase. Recommended alternatives for this product can be found below, along with publications, customer reviews and Q&As</p>

製品の特性

製品の状態	Liquid
保存方法	Shipped at 4°C. Upon delivery aliquot and store at -20°C. Avoid repeated freeze / thaw cycles.
バッファー	pH: 7.30 Preservative: 0.02% Sodium azide Constituents: 0.5% Tris buffered saline, 0.5% BSA
精製度	Immunogen affinity purified
特記事項 (精製)	ab91501 was purified from goat serum by ammonium sulphate precipitation followed by antigen

	affinity chromatography using the immunizing peptide.
ポリ/モノ	ポリクローナル
アイソタイプ	IgG

アプリケーション

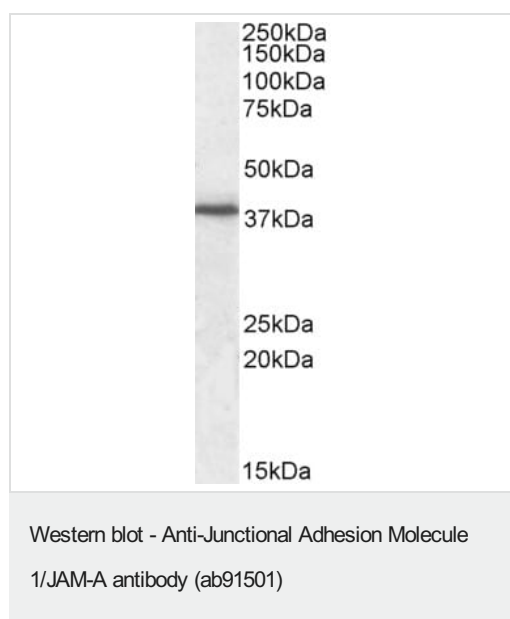
The Abpromise guarantee Abpromise保証は、 次のテスト済みアプリケーションにおけるab91501の使用に適用されます
アプリケーションノートには、推奨の開始希釈率がありますが、適切な希釈率につきましてはご検討ください。

アプリケーション	Abreviews	特記事項
WB		Use a concentration of 0.3 - 2 µg/ml. Detects a band of approximately 38 kDa (predicted molecular weight: 33 kDa). A 1 hour primary incubation is recommended for this product.

ターゲット情報

機能	Seems to plays a role in epithelial tight junction formation. Appears early in primordial forms of cell junctions and recruits PARD3. The association of the PARD6-PARD3 complex may prevent the interaction of PARD3 with JAM1, thereby preventing tight junction assembly (By similarity). Plays a role in regulating monocyte transmigration involved in integrity of epithelial barrier. Involved in platelet activation. In case of orthoreovirus infection, serves as receptor for the virus.
配列類似性	Belongs to the immunoglobulin superfamily. Contains 2 Ig-like V-type (immunoglobulin-like) domains.
翻訳後修飾	N-glycosylated.
細胞内局在	Cell junction > tight junction. Cell membrane. Localized at tight junctions of both epithelial and endothelial cells.

画像



Anti-Junctional Adhesion Molecule 1/JAM-A antibody (ab91501) at 0.3 µg/ml + Human Peripheral Blood Mononucleocyte lysate at 35 µg

Predicted band size: 33 kDa

Observed band size: 38 kDa

The observed molecular weight corresponds to earlier findings with different antibodies from other commercial sources.

Please note: All products are "FOR RESEARCH USE ONLY. NOT FOR USE IN DIAGNOSTIC PROCEDURES"

Our Abpromise to you: Quality guaranteed and expert technical support

- Replacement or refund for products not performing as stated on the datasheet
- Valid for 12 months from date of delivery
- Response to your inquiry within 24 hours

- We provide support in Chinese, English, French, German, Japanese and Spanish
- Extensive multi-media technical resources to help you
- We investigate all quality concerns to ensure our products perform to the highest standards

If the product does not perform as described on this datasheet, we will offer a refund or replacement. For full details of the Abpromise, please visit <https://www.abcam.co.jp/abpromise> or contact our technical team.

Terms and conditions

- Guarantee only valid for products bought direct from Abcam or one of our authorized distributors