

Anti-JPH3 antibody ab79063

画像数 2

製品の概要

製品名	Anti-JPH3 antibody
製品の詳細	Rabbit polyclonal to JPH3
由来種	Rabbit
アプリケーション	適用あり: ICC/IF, WB
種交差性	交差種: Human
免疫原	A synthetic 18 amino acid peptide near the carboxy terminus of human JPH3 (protein accession number: NP_065706)
特記事項	<p>The Life Science industry has been in the grips of a reproducibility crisis for a number of years. Abcam is leading the way in addressing this with our range of recombinant monoclonal antibodies and knockout edited cell lines for gold-standard validation. Please check that this product meets your needs before purchasing.</p> <p>If you have any questions, special requirements or concerns, please send us an inquiry and/or contact our Support team ahead of purchase. Recommended alternatives for this product can be found below, along with publications, customer reviews and Q&As</p>

製品の特性

製品の状態	Liquid
保存方法	Shipped at 4°C. Store at +4°C.
バッファー	pH: 7.2 Preservative: 0.02% Sodium azide Constituent: PBS
精製度	Immunogen affinity purified
特記事項(精製)	Affinity chromatography purified via peptide column
ポリ/モノ	ポリクローナル
アイソタイプ	IgG

アプリケーション

The Abpromise guarantee

Abpromise保証は、次のテスト済みアプリケーションにおけるab79063の使用に適用されます

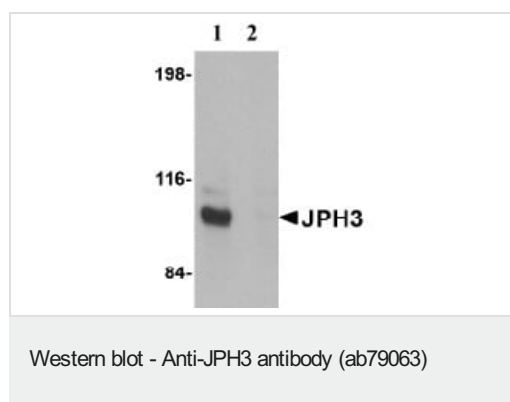
アプリケーションノートには、推奨の開始希釈率がありますが、適切な希釈率につきましてはご確認ください。

アプリケーション	Abreviews	特記事項
ICC/IF		Use a concentration of 20 µg/ml.
WB		Use a concentration of 1 - 2 µg/ml. Predicted molecular weight: 81 kDa.

ターゲット情報

機能	Contributes to the stabilization of the junctional membrane complexes, which are common to excitable cells and mediate cross-talk between cell surface and intracellular ion channels. Probably acts by anchoring the plasma membrane and endoplasmic reticulum. May play an active role in certain neurons involved in motor coordination.
組織特異性	Specifically expressed in brain.
関連疾患	Defects in JPH3 are the cause of Huntington disease-like type 2 (HDL2) [MIM:606438]. Huntington disease (HD) is a neurodegenerative disorder resulting primarily from the loss of medium spiny projection neurons in the striatum, especially in the caudate nucleus, and, to a lesser extent, atrophy of mesencephalic and cortical structures. The typical clinical picture of HD combines familial adult onset chorea and subcortical dementia that usually begin during the fourth decade of life.
配列類似性	Belongs to the junctophilin family. Contains 8 MORN repeats.
ドメイン	The MORN (membrane occupation and recognition nexus) repeats contribute to the plasma membrane binding, possibly by interacting with phospholipids.
細胞内局在	Cell membrane. Endoplasmic reticulum membrane. Localized predominantly on the plasma membrane. The transmembrane domain is anchored in endoplasmic reticulum membrane, while the N-terminal part associates with the plasma membrane.

画像



All lanes : Anti-JPH3 antibody (ab79063) at 1 µg/ml

Lane 1 : Daudi cell lysate

Lane 2 : Daudi cell lysate with blocking peptide

Lysates/proteins at 15 µg per lane.

Predicted band size: 81 kDa

Observed band size: 100 kDa

Immunocytochemistry/ Immunofluorescence - Anti-JPH3 antibody (ab79063)

Immunofluorescence of JPH3 in Human Brain cells using ab79063 at 20 ug/ml.

Please note: All products are "FOR RESEARCH USE ONLY. NOT FOR USE IN DIAGNOSTIC PROCEDURES"

Our Abpromise to you: Quality guaranteed and expert technical support

- Replacement or refund for products not performing as stated on the datasheet
- Valid for 12 months from date of delivery
- Response to your inquiry within 24 hours
- We provide support in Chinese, English, French, German, Japanese and Spanish
- Extensive multi-media technical resources to help you
- We investigate all quality concerns to ensure our products perform to the highest standards

If the product does not perform as described on this datasheet, we will offer a refund or replacement. For full details of the Abpromise, please visit <https://www.abcam.co.jp/abpromise> or contact our technical team.

Terms and conditions

- Guarantee only valid for products bought direct from Abcam or one of our authorized distributors