

Anti-JP-2 antibody ab79071

★★★★★ [1 Abreviews](#) [3 References](#) [画像数 1](#)

製品の概要

製品名	Anti-JP-2 antibody
製品の詳細	Rabbit polyclonal to JP-2
由来種	Rabbit
アプリケーション	適用あり: ELISA, WB
種交差性	交差種: Mouse, Rat, Human
免疫原	Synthetic peptide corresponding to Human JP-2 (C terminal).
特記事項	<p>The Life Science industry has been in the grips of a reproducibility crisis for a number of years. Abcam is leading the way in addressing this with our range of recombinant monoclonal antibodies and knockout edited cell lines for gold-standard validation. Please check that this product meets your needs before purchasing.</p> <p>If you have any questions, special requirements or concerns, please send us an inquiry and/or contact our Support team ahead of purchase. Recommended alternatives for this product can be found below, along with publications, customer reviews and Q&As</p>

製品の特性

製品の状態	Liquid
保存方法	Shipped at 4°C. Store at +4°C.
バッファー	pH: 7.2 Preservative: 0.02% Sodium azide Constituent: PBS
精製度	Immunogen affinity purified
特記事項(精製)	Affinity chromatography purified via peptide column
ポリ/モノ	ポリクローナル
アイソタイプ	IgG

アプリケーション

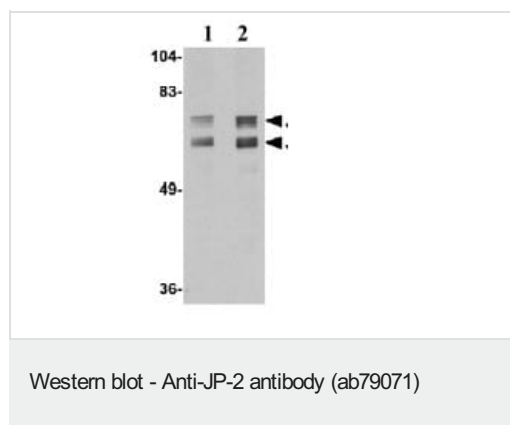
The Abpromise guarantee **Abpromise保証は、次のテスト済みアプリケーションにおけるab79071の使用に適用されます**
アプリケーションノートには、推奨の開始希釈率がありますが、適切な希釈率につきましてはご検討ください。

アプリケーション	Abreviews	特記事項
ELISA		Use at an assay dependent concentration.
WB	★★★★★ (1)	Use a concentration of 1 - 2 µg/ml. Predicted molecular weight: 74 kDa.

ターゲット情報

機能	Contributes to the stabilization of the junctional membrane complexes, which are common to excitable cells and mediate cross-talk between cell surface and intracellular ion channels. Probably acts by anchoring the plasma membrane and endoplasmic/sarcoplasmic reticulum. Contributes to the construction of skeletal muscle triad junctions, and plays an essential role in heart development.
組織特異性	Specifically expressed in skeletal muscle and heart.
関連疾患	Defects in JPH2 are the cause of cardiomyopathy familial hypertrophic type 17 (CMH17) [MIM:613873]. CMH17 is a hereditary heart disorder characterized by ventricular hypertrophy, which is usually asymmetric and often involves the interventricular septum. The symptoms include dyspnea, syncope, collapse, palpitations, and chest pain. They can be readily provoked by exercise. The disorder has inter- and intrafamilial variability ranging from benign to malignant forms with high risk of cardiac failure and sudden cardiac death.
配列類似性	Belongs to the junctophilin family. Contains 8 MORN repeats.
ドメイン	The MORN (membrane occupation and recognition nexus) repeats contribute to the plasma membrane binding, possibly by interacting with phospholipids.
細胞内局在	Cell membrane. Endoplasmic reticulum membrane. Sarcoplasmic reticulum membrane. Localized predominantly on the plasma membrane. The transmembrane domain is anchored in endoplasmic/sarcoplasmic reticulum membrane, while the N-terminal part associates with the plasma membrane. In heart cells, it predominantly associates along Z lines within myocytes. In skeletal muscle, it is specifically localized at the junction of A and I bands.

画像



Lane 1 : Anti-JP-2 antibody (ab79071) at 1 µg/ml

Lane 2 : Anti-JP-2 antibody (ab79071) at 2 µg/ml

All lanes : mouse brain tissue lysate

Lysates/proteins at 15 µg per lane.

Predicted band size: 74 kDa

Observed band size: 74 kDa

Additional bands at: 64 kDa (possible isoform)

Please note: All products are "FOR RESEARCH USE ONLY. NOT FOR USE IN DIAGNOSTIC PROCEDURES"

Our Abpromise to you: Quality guaranteed and expert technical support

- Replacement or refund for products not performing as stated on the datasheet
- Valid for 12 months from date of delivery
- Response to your inquiry within 24 hours

- We provide support in Chinese, English, French, German, Japanese and Spanish
- Extensive multi-media technical resources to help you
- We investigate all quality concerns to ensure our products perform to the highest standards

If the product does not perform as described on this datasheet, we will offer a refund or replacement. For full details of the Abpromise, please visit <https://www.abcam.co.jp/abpromise> or contact our technical team.

Terms and conditions

- Guarantee only valid for products bought direct from Abcam or one of our authorized distributors