


Anti-JDP2 antibody ab40916

[1 Abreviews](#) [5 References](#) [画像数 2](#)

製品の概要

製品名	Anti-JDP2 antibody
製品の詳細	Rabbit polyclonal to JDP2
由来種	Rabbit
特異性	From Jan 2024, QC testing of replenishment batches of this polyclonal changed. All tested and expected application and reactive species combinations are still covered by our Abcam product promise. However, we no longer test all applications. For more information on a specific batch, please contact our Scientific Support who will be happy to help.
アプリケーション	適用あり: WB, ICC/IF 適用なし: IHC-P
種交差性	交差種: Human 交差が予測される動物種: Rat  非交差種: Mouse
免疫原	Synthetic peptide conjugated to KLH derived from within residues 100 to the C-terminus of Human JDP2. Immunogen の所有権に関して (Peptide available as ab41625 .)
ポジティブ・コントロール	ab40916 gave a positive signal in WB on the following lysates: HeLa whole cell, HeLa nuclear, Jurkat whole cell, Jurkat nuclear, HepG2 nuclear, Du145 whole cell and LnCAP nuclear. ICC/IF: HepG2 cells.
特記事項	<p>The Life Science industry has been in the grips of a reproducibility crisis for a number of years. Abcam is leading the way in addressing this with our range of recombinant monoclonal antibodies and knockout edited cell lines for gold-standard validation. Please check that this product meets your needs before purchasing.</p> <p>If you have any questions, special requirements or concerns, please send us an inquiry and/or contact our Support team ahead of purchase. Recommended alternatives for this product can be found below, along with publications, customer reviews and Q&As</p>

製品の特性

製品の状態	Liquid
保存方法	Shipped at 4°C. Store at +4°C short term (1-2 weeks). Upon delivery aliquot. Store at -20°C or -80°C. Avoid freeze / thaw cycle.
バッファー	pH: 7.40 Preservative: 0.02% Sodium azide

Constituent: PBS

Batches of this product that have a concentration < 1mg/ml may have BSA added as a stabilising agent. If you would like information about the formulation of a specific lot, please contact our scientific support team who will be happy to help.

精製度 Immunogen affinity purified
ポリモノ ポリクローナル
アイソタイプ IgG

アプリケーション

The Abpromise guarantee Abpromise保証は、次のテスト済みアプリケーションにおけるab40916の使用に適用されず
アプリケーションノートには、推奨の開始希釈率がありますが、適切な希釈率につきましてはご検討ください。

アプリケーション	Abreviews	特記事項
WB		Use a concentration of 1 µg/ml. Detects a band of approximately 19 kDa (predicted molecular weight: 19 kDa).
ICC/IF		Use a concentration of 1 µg/ml.

追加情報 Is unsuitable for IHC-P.

ターゲット情報

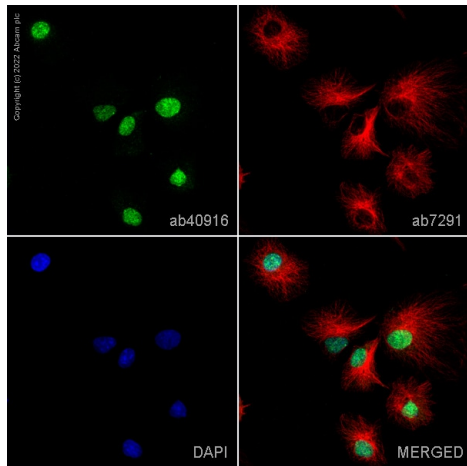
機能 Component of the AP-1 transcription factor that represses transactivation mediated by the Jun family of proteins. Involved in a variety of transcriptional responses associated with AP-1 such as UV-induced apoptosis, cell differentiation, tumorigenesis and antitumorigenesis. Can also function as a repressor by recruiting histone deacetylase 3/HDAC3 to the promoter region of JUN. May control transcription via direct regulation of the modification of histones and the assembly of chromatin.

配列類似性 Belongs to the bZIP family. ATF subfamily.
Contains 1 bZIP domain.

翻訳後修飾 Phosphorylation of Thr-148 by MAPK8 in response to different stress conditions such as, UV irradiation, oxidative stress and anisomycin treatments.

細胞内局在 Nucleus.

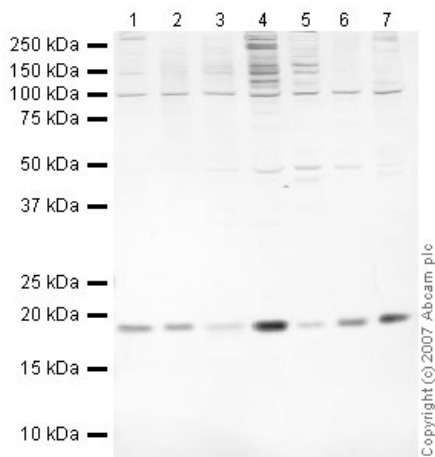
画像



Immunocytochemistry/ Immunofluorescence - Anti-JDP2 antibody (ab40916)

ab40916 staining JDP2 in HepG2 cells. The cells were fixed with 100% methanol (5 min), permeabilized with 0.1% PBS-Triton X-100 for 5 minutes and then blocked with 1% BSA/10% normal goat serum/0.3M glycine in 0.1%PBS-Tween for 1h. The cells were then incubated overnight at 4°C with ab40916 at 1µg/ml and **ab7291**, Mouse monoclonal [DM1A] to alpha Tubulin - Loading Control. Cells were then incubated with **ab150081**, Goat polyclonal Secondary Antibody to Rabbit IgG - H&L (Alexa Fluor® 488), pre-adsorbed at 1/1000 dilution (shown in green) and **ab150120**, Goat polyclonal Secondary Antibody to Mouse IgG - H&L (Alexa Fluor® 594), pre-adsorbed at 1/1000 dilution (shown in pseudocolour red). Nuclear DNA was labelled with DAPI (shown in blue).

Image was acquired with a high-content analyser (Operetta CLS, Perkin Elmer) and a maximum intensity projection of confocal sections is shown.



Western blot - Anti-JDP2 antibody (ab40916)

All lanes : Anti-JDP2 antibody (ab40916) at 1 µg/ml

Lane 1 : HeLa (Human epithelial carcinoma cell line) Whole Cell Lysate

Lane 2 : HeLa (Human epithelial carcinoma cell line) Nuclear Lysate

Lane 3 : Jurkat (Human T cell lymphoblast-like cell line) Whole Cell Lysate

Lane 4 : Jurkat nuclear extract lysate (**ab14844**)

Lane 5 : Hep G2 nuclear extract lysate (**ab14660**)

Lane 6 : Du145 (Human prostate carcinoma cell line) Whole Cell Lysate

Lane 7 : LNCaP (Human prostate adenocarcinoma cell line) Nuclear lysate

Lysates/proteins at 10 µg per lane.

Secondary

All lanes : IRDye 680 Conjugated Goat Anti-Rabbit IgG (H+L) at 1/10000 dilution

Performed under reducing conditions.

Predicted band size: 19 kDa

Observed band size: 19 kDa

Please note: All products are "FOR RESEARCH USE ONLY. NOT FOR USE IN DIAGNOSTIC PROCEDURES"

Our Abpromise to you: Quality guaranteed and expert technical support

- Replacement or refund for products not performing as stated on the datasheet
- Valid for 12 months from date of delivery
- Response to your inquiry within 24 hours

- We provide support in Chinese, English, French, German, Japanese and Spanish
- Extensive multi-media technical resources to help you
- We investigate all quality concerns to ensure our products perform to the highest standards

If the product does not perform as described on this datasheet, we will offer a refund or replacement. For full details of the Abpromise, please visit <https://www.abcam.co.jp/abpromise> or contact our technical team.

Terms and conditions

- Guarantee only valid for products bought direct from Abcam or one of our authorized distributors