


# Anti-ITPR3 antibody ab113292

**1** [References](#) **2** [画像数](#)

### 製品の概要

製品名	Anti-ITPR3 antibody
製品の詳細	Rabbit polyclonal to ITPR3
由来種	Rabbit
アプリケーション	<b>適用あり:</b> IHC-P
種交差性	<b>交差種:</b> Human <b>交差が予測される動物種:</b> Guinea pig, Gorilla, Orangutan 
免疫原	Synthetic peptide corresponding to a region within amino acids 625-675 of Human ITPR3 (NP_002215.2).
ポジティブ・コントロール	Human Breast Carcinoma, Colon Carcinoma, Osteosarcoma, Ovarian Carcinoma, and Stomach Adenocarcinoma tissues
特記事項	<p>The Life Science industry has been in the grips of a reproducibility crisis for a number of years. Abcam is leading the way in addressing this with our range of recombinant monoclonal antibodies and knockout edited cell lines for gold-standard validation. Please check that this product meets your needs before purchasing.</p> <p>If you have any questions, special requirements or concerns, please send us an inquiry and/or contact our Support team ahead of purchase. Recommended alternatives for this product can be found below, along with publications, customer reviews and Q&amp;As</p>

### 製品の特性

製品の状態	Liquid
保存方法	Shipped at 4°C. Upon delivery aliquot and store at -20°C. Avoid freeze / thaw cycles.
バッファー	pH: 6.8 Preservative: 0.09% Sodium azide Constituents: 99% Tris buffered saline, 0.1% BSA
精製度	Immunogen affinity purified
ポリ/モノ	ポリクローナル
アイソタイプ	IgG

### アプリケーション

## The Abpromise guarantee

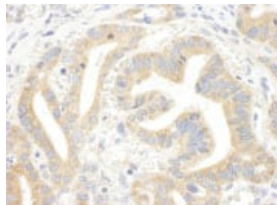
**Abpromise保証は、**次のテスト済みアプリケーションにおけるab113292の使用に適用されます  
アプリケーションノートには、推奨の開始希釈率がありますが、適切な希釈率につきましてはご確認ください。

アプリケーション	Abreviews	特記事項
IHC-P		1/100 - 1/500. Epitope exposure is recommended. Epitope exposure with citrate buffer will enhance staining.

## ターゲット情報

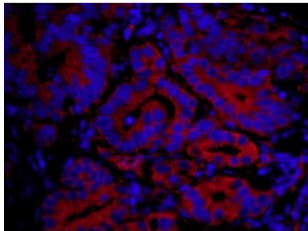
機能	Receptor for inositol 1,4,5-trisphosphate, a second messenger that mediates the release of intracellular calcium.
組織特異性	Expressed in intestinal crypt and villus epithelial cells.
配列類似性	Belongs to the InsP3 receptor family. Contains 5 MIR domains.
ドメイン	The receptor contains a calcium channel in its C-terminal extremity. Its large N-terminal cytoplasmic region has the ligand-binding site in the N-terminus and modulatory sites in the middle portion immediately upstream of the channel region.
翻訳後修飾	Phosphorylated on tyrosine residues. Phosphorylated by AKT1 on serine and/or threonine residues.
細胞内局在	Endoplasmic reticulum membrane.

## 画像



ab113292, at 1/250 dilution, staining ITPR3 in formalin-fixed, paraffin-embedded Human stomach carcinoma by Immunohistochemistry with DAB staining.

Immunohistochemistry (Formalin/PFA-fixed paraffin-embedded sections) - Anti-ITPR3 antibody (ab113292)



Immunohistochemistry (Formalin/PFA-fixed paraffin-embedded sections) - Anti-ITPR3 antibody (ab113292)

ab113292, at 1/250 dilution, staining ITPR3 in formalin-fixed, paraffin-embedded Human stomach carcinoma by Immunohistochemistry. Detection: Red-fluorescent Goat anti-Rabbit IgG-heavy and light chain cross-adsorbed Antibody DyLight® 594 Conjugated used at a dilution of 1/100.

**Please note:** All products are "FOR RESEARCH USE ONLY. NOT FOR USE IN DIAGNOSTIC PROCEDURES"

### Our Abpromise to you: Quality guaranteed and expert technical support

---

- Replacement or refund for products not performing as stated on the datasheet
- Valid for 12 months from date of delivery
- Response to your inquiry within 24 hours
- We provide support in Chinese, English, French, German, Japanese and Spanish
- Extensive multi-media technical resources to help you
- We investigate all quality concerns to ensure our products perform to the highest standards

If the product does not perform as described on this datasheet, we will offer a refund or replacement. For full details of the Abpromise, please visit <https://www.abcam.co.jp/abpromise> or contact our technical team.

### Terms and conditions

---

- Guarantee only valid for products bought direct from Abcam or one of our authorized distributors