




Anti-ITPR2 antibody ab5805

4 References [画像数 2](#)

製品の概要

製品名	Anti-ITPR2 antibody
製品の詳細	Rabbit polyclonal to ITPR2
由来種	Rabbit
アプリケーション	適用あり: ICC, IHC-Fr 適用なし: WB
種交差性	交差種: Rat, Human 交差が予測される動物種: Cow 
免疫原	Synthetic peptide corresponding to Rat ITPR2 aa 317-334. Sequence: ELNPDYRDAQNEGKTVRD (Peptide available as ab5842) <div>  Run BLAST with  Run BLAST with </div>
ポジティブ・コントロール	IHC-Fr: Rat brain tissue. ICC: SH-SY5Y cells.
特記事項	<p>The Life Science industry has been in the grips of a reproducibility crisis for a number of years. Abcam is leading the way in addressing this with our range of recombinant monoclonal antibodies and knockout edited cell lines for gold-standard validation. Please check that this product meets your needs before purchasing.</p> <p>If you have any questions, special requirements or concerns, please send us an inquiry and/or contact our Support team ahead of purchase. Recommended alternatives for this product can be found below, along with publications, customer reviews and Q&As</p>

製品の特性

製品の状態	Liquid
保存方法	Shipped at 4°C. Store at +4°C short term (1-2 weeks). Upon delivery aliquot. Store at -20°C or -80°C. Avoid freeze / thaw cycle.
バッファー	Preservative: 0.05% Sodium azide Constituents: 0.1% BSA, 99% PBS
精製度	Immunogen affinity purified
ポリ/モノ	ポリクローナル

アイソタイプ

IgG

アプリケーション

The Abpromise guarantee **Abpromise保証は、次のテスト済みアプリケーションにおけるab5805の使用に適用されます**
アプリケーションノートには、推奨の開始希釈率がありますが、適切な希釈率につきましてはご検討ください。

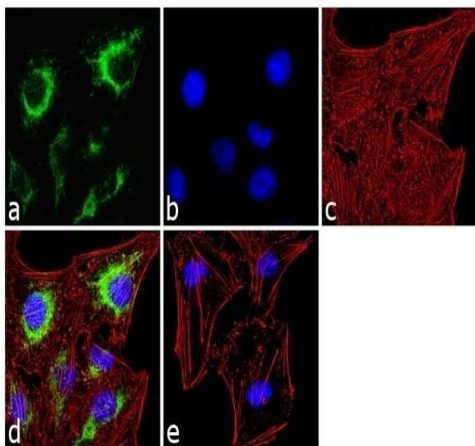
アプリケーション	Abreviews	特記事項
ICC		Use a concentration of 2 µg/ml.
IHC-Fr		1/100.

追加情報 Is unsuitable for WB.

ターゲット情報

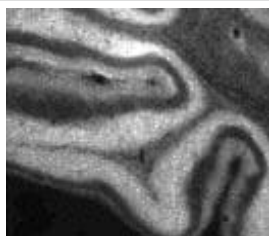
機能	Receptor for inositol 1,4,5-trisphosphate, a second messenger that mediates the release of intracellular calcium. This release is regulated by cAMP both dependently and independently of PKA.
組織特異性	Isoform Short is found in skeletal muscle and heart.
関連疾患	Anhidrosis, isolated, with normal sweat glands
配列類似性	Belongs to the InsP3 receptor family. Contains 5 MIR domains.
ドメイン	The receptor contains a calcium channel in its C-terminal extremity. Its large N-terminal cytoplasmic region has the ligand-binding site in the N-terminus and modulatory sites in the middle portion immediately upstream of the channel region.
翻訳後修飾	Phosphorylation by cAMP-dependent PKA on Ser-937 increases calcium release.
細胞内局在	Endoplasmic reticulum membrane.

画像



Immunocytochemistry - Anti-ITPR2 antibody
(ab5805)

4% paraformaldehyde-fixed, 0.1% Triton X-100 permeabilised SH-SY5Y (human neuroblastoma cell line from bone marrow) cells labeling ITPR2 using ab5805 at 2 µg/ml in 0.1% BSA for 3 hours at RT, followed by a Goat Anti-Rabbit (H&L) AlexaFluor® secondary antibody (Green (a)). The nuclear counter stain is DAPI (Blue (b)). F-actin is stained with AlexaFluor® 555-Rhodamine (Red (c)). Panel D shows the merged image. Panel (e) is a secondary antibody only control.



Immunohistochemistry (Frozen sections) - Anti-
ITPR2 antibody (ab5805)

Shows immunolocalization of IP3R-II in rat brain using ab5805.

Please note: All products are "FOR RESEARCH USE ONLY. NOT FOR USE IN DIAGNOSTIC PROCEDURES"

Our Abpromise to you: Quality guaranteed and expert technical support

- Replacement or refund for products not performing as stated on the datasheet
- Valid for 12 months from date of delivery
- Response to your inquiry within 24 hours
- We provide support in Chinese, English, French, German, Japanese and Spanish
- Extensive multi-media technical resources to help you
- We investigate all quality concerns to ensure our products perform to the highest standards

If the product does not perform as described on this datasheet, we will offer a refund or replacement. For full details of the Abpromise, please visit <https://www.abcam.co.jp/abpromise> or contact our technical team.

Terms and conditions

- Guarantee only valid for products bought direct from Abcam or one of our authorized distributors