

Anti-ITK/EMT antibody [Y401] ab32039

リコンビナント **RabMAb**

★★★★★ **1 Abreviews** **10 References** 画像数 3

製品の概要

製品名	Anti-ITK/EMT antibody [Y401]
製品の詳細	Rabbit monoclonal [Y401] to ITK/EMT
由来種	Rabbit
アプリケーション	適用あり: Flow Cyt (Intra), WB 適用なし: IP
種交差性	交差種: Human
免疫原	Synthetic peptide within Human ITK/EMT aa 1-100 (N terminal). The exact sequence is proprietary.
ポジティブ・コントロール	WB: Jurkat whole cell lysate and MOLT-4 (Human lymphoblastic leukemia T lymphoblast) whole cell lysate. Flow Cyt (Intra): Jurkat cells.
特記事項	<p>This product is a recombinant monoclonal antibody, which offers several advantages including:</p> <ul style="list-style-type: none"> - High batch-to-batch consistency and reproducibility - Improved sensitivity and specificity - Long-term security of supply - Animal-free production <p>For more information see here.</p> <p>Our RabMAb[®] technology is a patented hybridoma-based technology for making rabbit monoclonal antibodies. For details on our patents, please refer to RabMAb[®] patents.</p> <p>Mouse, Rat: We have preliminary internal testing data to indicate this antibody may not react with these species. Please contact us for more information.</p>

製品の特性

製品の状態	Liquid
保存方法	Shipped at 4°C. Upon delivery aliquot and store at -20°C. Avoid freeze / thaw cycles.
バッファー	pH: 7.20 Preservative: 0.01% Sodium azide Constituents: 49% PBS, 50% Glycerol (glycerin, glycerine), 0.05% BSA
精製度	Protein A purified

ポリ/モノ	モノクローナル
クローン名	Y401
アイソタイプ	IgG

アプリケーション

The Abpromise guarantee **Abpromise保証は、** 次のテスト済みアプリケーションにおけるab32039の使用に適用されます
アプリケーションノートには、推奨の開始希釈率がありますが、適切な希釈率につきましてはご検討ください。

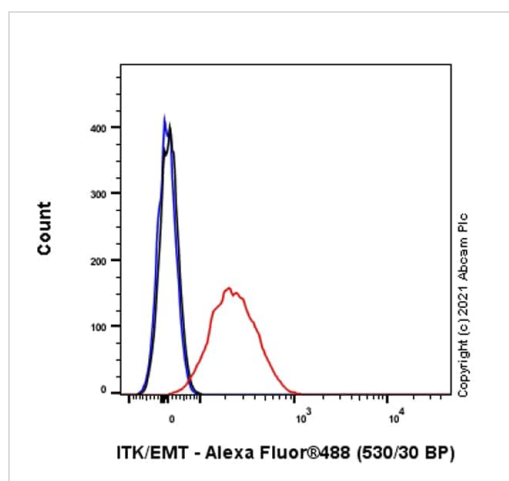
アプリケーション	Abreviews	特記事項
Flow Cyt (Intra)		1/100. ab172730 - Rabbit monoclonal IgG, is suitable for use as an isotype control with this antibody.
WB		1/1000 - 1/5000. Detects a band of approximately 68 kDa (predicted molecular weight: 72 kDa).

追加情報 Is unsuitable for IP.

ターゲット情報

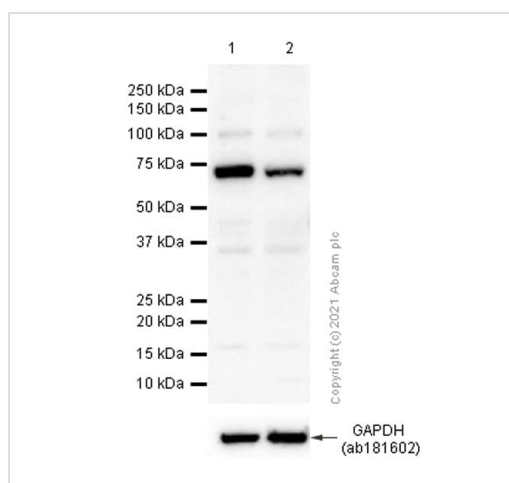
機能	Plays a role in T-cell proliferation and differentiation.
組織特異性	T-cell lines and natural killer cell lines.
関連疾患	Defects in ITK are the cause of lymphoproliferative syndrome EBV-associated autosomal type 1 (LPSA1) [MIM:613011]. LPSA1 is a rare immunodeficiency characterized by extreme susceptibility to infection with Epstein-Barr virus (EBV). Inadequate immune response to EBV can have a fatal outcome. Clinical features include splenomegaly, lymphadenopathy, anemia, thrombocytopenia, pancytopenia, recurrent infections. There is an increased risk for lymphoma.
配列類似性	Belongs to the protein kinase superfamily. Tyr protein kinase family. TEC subfamily. Contains 1 Btk-type zinc finger. Contains 1 PH domain. Contains 1 protein kinase domain. Contains 1 SH2 domain. Contains 1 SH3 domain.
細胞内局在	Cell membrane. Localizes to cell surface receptors in the plasma membrane after stimulation with respective receptors (TCR, CD28, CD2) in T-cells.

画像



Flow Cytometry (Intracellular) - Anti-ITK/EMT antibody [Y401] (ab32039)

Intracellular Flow Cytometry analysis of Jurkat (Human T cell leukemia T lymphocyte) cells labeling ITK/EMT with purified **ab320396** at 1:50 dilution (10 µg/ml) (Red). Cells were fixed with 4% Paraformaldehyde and permeabilised with 90% Methanol. A Goat anti rabbit IgG (Alexa Fluor® 488, **ab150081**) (1/2000 dilution) was used as the secondary antibody. Rabbit monoclonal IgG (Black) was used as a isotype control. Cell without incubation with primary antibody and secondary antibody (Blue) were used as unlabeled control.



Western blot - Anti-ITK/EMT antibody [Y401] (ab32039)

All lanes : Anti-ITK/EMT antibody [Y401] (ab32039) at 1/1000 dilution

Lane 1 : Jurkat (Human T cell leukemia T lymphocyte) whole cell lysate

Lane 2 : MOLT-4 (Human lymphoblastic leukemia T lymphoblast) whole cell lysate

Lysates/proteins at 20 µg per lane.

Secondary

All lanes : Goat Anti-Rabbit IgG H&L (HRP) (**ab97051**) at 1/20000 dilution

Predicted band size: 72 kDa

Observed band size: 68 kDa

Blocking and diluting buffer and concentration: 5% NFDM/TBST.

ab181602 was used as GAPDH loading control.

Why choose a recombinant antibody?



Research with confidence
Consistent and reproducible results



Long-term and scalable supply
Recombinant technology



Success from the first experiment
Confirmed specificity



Ethical standards compliant
Animal-free production

Anti-ITK/EMT antibody [Y401] (ab32039)

Please note: All products are "FOR RESEARCH USE ONLY. NOT FOR USE IN DIAGNOSTIC PROCEDURES"

Our Abpromise to you: Quality guaranteed and expert technical support

- Replacement or refund for products not performing as stated on the datasheet
- Valid for 12 months from date of delivery
- Response to your inquiry within 24 hours
- We provide support in Chinese, English, French, German, Japanese and Spanish
- Extensive multi-media technical resources to help you
- We investigate all quality concerns to ensure our products perform to the highest standards

If the product does not perform as described on this datasheet, we will offer a refund or replacement. For full details of the Abpromise, please visit <https://www.abcam.co.jp/abpromise> or contact our technical team.

Terms and conditions

- Guarantee only valid for products bought direct from Abcam or one of our authorized distributors