

Anti-ITIH2/SHAP antibody ab118257

[3 References](#) [画像数 2](#)

製品の概要

製品名	Anti-ITIH2/SHAP antibody
製品の詳細	Rabbit polyclonal to ITIH2/SHAP
由来種	Rabbit
アプリケーション	適用あり: WB, IHC-P
種交差性	交差種: Human 交差が予測される動物種: Mouse, Rat 
免疫原	Recombinant fragment corresponding to Human ITIH2/SHAP aa 124-321.
ポジティブ・コントロール	WB: Fetal brain lysate IHC-P: Fetal brain tissue
特記事項	<p>The Life Science industry has been in the grips of a reproducibility crisis for a number of years. Abcam is leading the way in addressing this with our range of recombinant monoclonal antibodies and knockout edited cell lines for gold-standard validation. Please check that this product meets your needs before purchasing.</p> <p>If you have any questions, special requirements or concerns, please send us an inquiry and/or contact our Support team ahead of purchase. Recommended alternatives for this product can be found below, along with publications, customer reviews and Q&As</p>

製品の特性

製品の状態	Liquid
保存方法	Shipped at 4°C. Upon delivery aliquot and store at -20°C. Avoid repeated freeze / thaw cycles.
バッファー	pH: 7.20 Preservative: 0.02% Sodium azide Constituents: 98% PBS, 1% BSA
精製度	Immunogen affinity purified
ポリモノ	ポリクローナル
アイソタイプ	IgG

アプリケーション

The Abpromise guarantee

Abpromise保証は、次のテスト済みアプリケーションにおけるab118257の使用に適用されます

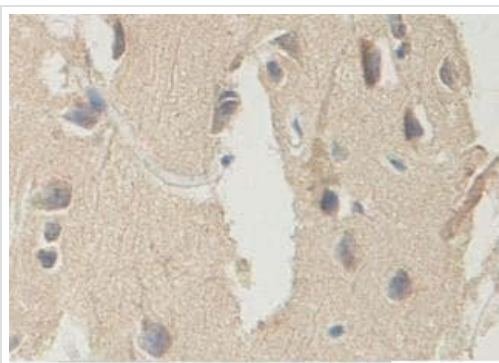
アプリケーションノートには、推奨の開始希釈率がありますが、適切な希釈率につきましてはご確認ください。

アプリケーション	Abreviews	特記事項
WB		1/500 - 1/1000. Detects a band of approximately 106 kDa (predicted molecular weight: 106 kDa).
IHC-P		1/100 - 1/500.

ターゲット情報

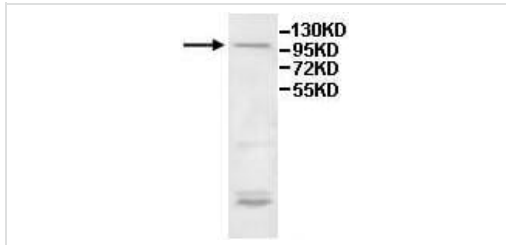
機能	May act as a carrier of hyaluronan in serum or as a binding protein between hyaluronan and other matrix protein, including those on cell surfaces in tissues to regulate the localization, synthesis and degradation of hyaluronan which are essential to cells undergoing biological processes.
組織特異性	Plasma.
配列類似性	Belongs to the ITIH family. Contains 1 VIT domain. Contains 1 VWFA domain.
翻訳後修飾	Heavy chains are linked to bikunin via chondroitin 4-sulfate esterified to the alpha-carboxyl of the C-terminal aspartate after propeptide cleavage. Phosphorylation sites are present in the extracellular medium.
細胞内局在	Secreted.

画像



Immunohistochemical analysis of formalin fixed paraffin embedded Human fetal brain tissue using ab118257 at 1/100

Immunohistochemistry (Formalin/PFA-fixed paraffin-embedded sections) - Anti-ITIH2/SHAP antibody (ab118257)



Anti-ITIH2/SHAP antibody (ab118257) at 1/500 dilution + Human Fetal brain lysate

Predicted band size: 106 kDa

Observed band size: 106 kDa

Western blot - Anti-ITIH2/SHAP antibody (ab118257)

Please note: All products are "FOR RESEARCH USE ONLY. NOT FOR USE IN DIAGNOSTIC PROCEDURES"

Our Abpromise to you: Quality guaranteed and expert technical support

- Replacement or refund for products not performing as stated on the datasheet
- Valid for 12 months from date of delivery
- Response to your inquiry within 24 hours
- We provide support in Chinese, English, French, German, Japanese and Spanish
- Extensive multi-media technical resources to help you
- We investigate all quality concerns to ensure our products perform to the highest standards

If the product does not perform as described on this datasheet, we will offer a refund or replacement. For full details of the Abpromise, please visit <https://www.abcam.co.jp/abpromise> or contact our technical team.

Terms and conditions

- Guarantee only valid for products bought direct from Abcam or one of our authorized distributors