


Anti-ITGA11 antibody ab114113

2 References [画像数 1](#)

製品の概要

製品名	Anti-ITGA11 antibody
製品の詳細	Goat polyclonal to ITGA11
由来種	Goat
アプリケーション	適用あり: WB
種交差性	交差種: Mouse 交差が予測される動物種: Rat 
免疫原	Synthetic peptide: C-PTEEDLSHAPQRNH , corresponding to C terminal amino acids 1047-1060 of Mouse ITGA11 (NP_795896.4). Run BLAST with Run BLAST with
ポジティブ・コントロール	Mouse skeletal muscle lysate
特記事項	<p>The Life Science industry has been in the grips of a reproducibility crisis for a number of years. Abcam is leading the way in addressing this with our range of recombinant monoclonal antibodies and knockout edited cell lines for gold-standard validation. Please check that this product meets your needs before purchasing.</p> <p>If you have any questions, special requirements or concerns, please send us an inquiry and/or contact our Support team ahead of purchase. Recommended alternatives for this product can be found below, along with publications, customer reviews and Q&As</p>

製品の特性

製品の状態	Liquid
保存方法	Shipped at 4°C. Upon delivery aliquot and store at -20°C. Avoid freeze / thaw cycles.
バッファー	pH: 7.30 Preservative: 0.02% Sodium azide Constituents: 0.5% BSA, 99.48% Tris buffered saline
精製度	Immunogen affinity purified
特記事項(精製)	ab114113 was purified from goat serum by ammonium sulphate precipitation followed by antigen affinity chromatography using the immunizing peptide.
ポリ/モノ	ポリクローナル

アプリケーション

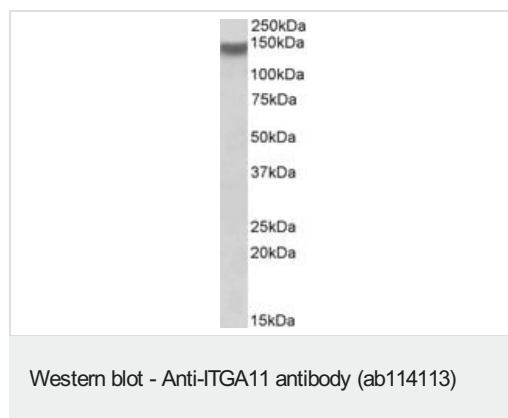
The Abpromise guarantee **Abpromise保証は、次のテスト済みアプリケーションにおけるab114113の使用に適用されず**
アプリケーションノートには、推奨の開始希釈率がありますが、適切な希釈率につきましてはご検討ください。

アプリケーション	Abreviews	特記事項
WB		Use a concentration of 1 - 3 µg/ml. Detects a band of approximately 140 kDa (predicted molecular weight: 133 kDa). 1 hour primary incubation is recommended for this product.

ターゲット情報

機能	Integrin alpha-11/beta-1 is a receptor for collagen.
組織特異性	According to PubMed:10464311, highest levels of expression in uterus and heart, intermediate levels in skeletal muscle and intermediate to low levels in pancreas, kidney and placenta. According to PubMed:10486209, also found in brain, colon, lung, small intestine, stomach, testis, salivary glands, thyroid glands and prostate. Very low levels in peripheral blood lymphocytes, fetal brain and fetal liver.
配列類似性	Belongs to the integrin alpha chain family. Contains 7 FG-GAP repeats. Contains 1 VWFA domain.
発生段階	Strongly up-regulated in differentiating fetal muscle cells (in vitro).
ドメイン	The integrin I-domain (insert) is a VWFA domain. Integrins with I-domains do not undergo protease cleavage.
細胞内局在	Membrane.

画像



Anti-ITGA11 antibody (ab114113) at 1 µg/ml + Mouse skeletal muscle lysate (in RIPA buffer) at 35 µg

Developed using the ECL technique.

Predicted band size: 133 kDa

Observed band size: 140 kDa

Primary incubation: 1 hour

Our Abpromise to you: Quality guaranteed and expert technical support

- Replacement or refund for products not performing as stated on the datasheet
- Valid for 12 months from date of delivery
- Response to your inquiry within 24 hours

- We provide support in Chinese, English, French, German, Japanese and Spanish
- Extensive multi-media technical resources to help you
- We investigate all quality concerns to ensure our products perform to the highest standards

If the product does not perform as described on this datasheet, we will offer a refund or replacement. For full details of the Abpromise, please visit <https://www.abcam.co.jp/abpromise> or contact our technical team.

Terms and conditions

- Guarantee only valid for products bought direct from Abcam or one of our authorized distributors