

Anti-ISK1 antibody ab121250

2 References [画像数 6](#)

製品の概要

製品名	Anti-ISK1 antibody
製品の詳細	Rabbit polyclonal to ISK1
由来種	Rabbit
アプリケーション	適用あり: WB, IHC-P
種交差性	交差種: Mouse, Rat, Human
免疫原	Recombinant fragment corresponding to amino acids 23-146 of Human ISK1 (Q9ULR0).
ポジティブ・コントロール	WB: U-251 MG, RT4, NIH-3T3, and NBT-II whole cell lysates; IHC-P: Human lymphoid, testis, placenta, and kidney tissues.
特記事項	<p>The Life Science industry has been in the grips of a reproducibility crisis for a number of years. Abcam is leading the way in addressing this with our range of recombinant monoclonal antibodies and knockout edited cell lines for gold-standard validation. Please check that this product meets your needs before purchasing.</p> <p>If you have any questions, special requirements or concerns, please send us an inquiry and/or contact our Support team ahead of purchase. Recommended alternatives for this product can be found below, along with publications, customer reviews and Q&As</p>

製品の特性

製品の状態	Liquid
保存方法	Shipped at 4°C. Upon delivery aliquot and store at -20°C. Avoid freeze / thaw cycles.
バッファー	<p>pH: 7.20</p> <p>Preservative: 0.02% Sodium azide</p> <p>Constituents: 59% PBS, 40% Glycerol (glycerin, glycerine)</p>
精製度	Immunogen affinity purified
ポリ/モノ	ポリクローナル
アイソタイプ	IgG

アプリケーション

The Abpromise guarantee

Abpromise保証は、次のテスト済みアプリケーションにおけるab121250の使用に適用されます

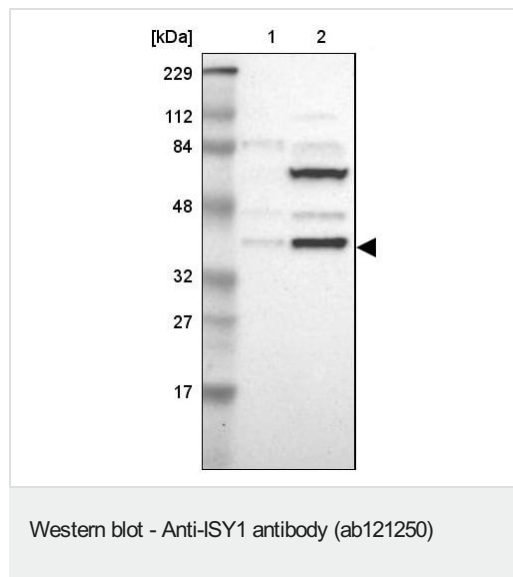
アプリケーションノートには、推奨の開始希釈率がありますが、適切な希釈率につきましてはご確認ください。

アプリケーション	Abreviews	特記事項
WB		Use a concentration of 0.04 - 0.4 µg/ml.
IHC-P		1/50 - 1/200. Perform heat mediated antigen retrieval with citrate buffer pH 6 before commencing with IHC staining protocol. Use buffer at pH 6 for antigen retrieval.

ターゲット情報

機能	May play a role in pre-mRNA splicing.
配列類似性	Belongs to the ISY1 family.
翻訳後修飾	Phosphorylated upon DNA damage, probably by ATM or ATR.
細胞内局在	Nucleus.

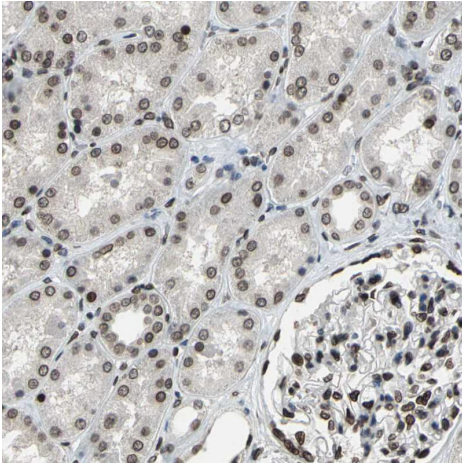
画像



All lanes : Anti-ISY1 antibody (ab121250)

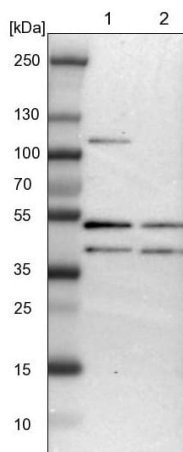
Lane 1 : RT4 (human urinary bladder cancer cell line) whole cell lysate

Lane 2 : U-251 MG (formally U-373 MG) (human brain glioma cell line) whole cell lysate



Immunohistochemistry (Formalin/PFA-fixed paraffin-embedded sections) - Anti-ISK1 antibody (ab121250)

Immunohistochemistry (Formalin/PFA-fixed paraffin-embedded sections) analysis of kidney tissue labelling ISK1 with ab121250 at 1/50 dilution. Heat mediated antigen retrieval performed with citrate buffer pH 6 before commencing with IHC staining protocol.

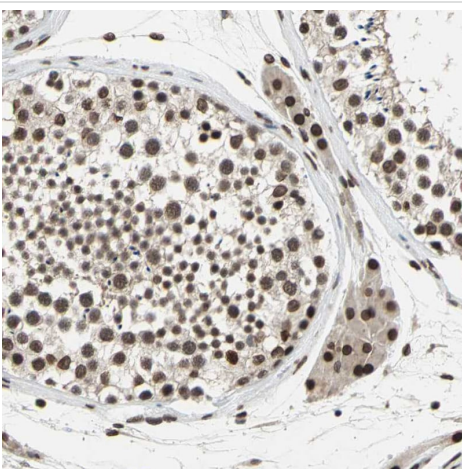


Western blot - Anti-ISK1 antibody (ab121250)

All lanes : Anti-ISK1 antibody (ab121250)

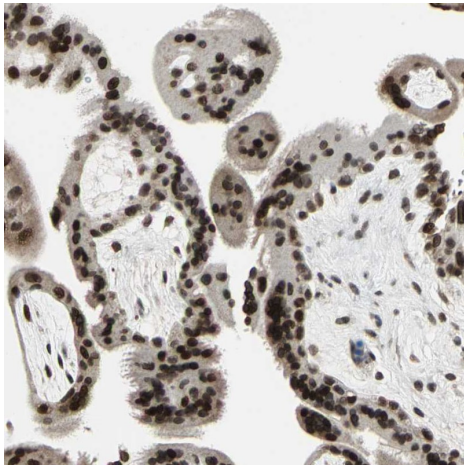
Lane 1 : NIH/3T3 (mouse embryo fibroblast cell line) whole cell lysate

Lane 2 : NBT-II (rat urinary bladder tumor cell line) whole cell lysate



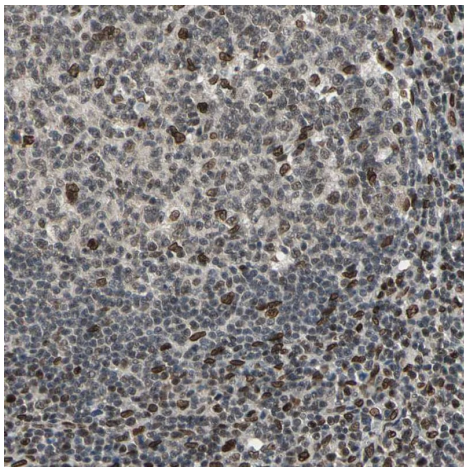
Immunohistochemistry (Formalin/PFA-fixed paraffin-embedded sections) - Anti-ISK1 antibody (ab121250)

Immunohistochemistry (Formalin/PFA-fixed paraffin-embedded sections) analysis of testis tissue labelling ISK1 with ab121250 at 1/50 dilution. Heat mediated antigen retrieval performed with citrate buffer pH 6 before commencing with IHC staining protocol.



Immunohistochemistry (Formalin/PFA-fixed paraffin-embedded sections) - Anti-ISO1 antibody (ab121250)

Immunohistochemistry (Formalin/PFA-fixed paraffin-embedded sections) analysis of placenta tissue labelling ISO1 with ab121250 at 1/50 dilution. Heat mediated antigen retrieval performed with citrate buffer pH 6 before commencing with IHC staining protocol.



Immunohistochemistry (Formalin/PFA-fixed paraffin-embedded sections) - Anti-ISO1 antibody (ab121250)

Immunohistochemistry (Formalin/PFA-fixed paraffin-embedded sections) analysis of lymphoid tissue labelling ISO1 with ab121250 at 1/50 dilution. Heat mediated antigen retrieval performed with citrate buffer pH 6 before commencing with IHC staining protocol.

Please note: All products are "FOR RESEARCH USE ONLY. NOT FOR USE IN DIAGNOSTIC PROCEDURES"

Our Abpromise to you: Quality guaranteed and expert technical support

- Replacement or refund for products not performing as stated on the datasheet
- Valid for 12 months from date of delivery
- Response to your inquiry within 24 hours
- We provide support in Chinese, English, French, German, Japanese and Spanish
- Extensive multi-media technical resources to help you
- We investigate all quality concerns to ensure our products perform to the highest standards

If the product does not perform as described on this datasheet, we will offer a refund or replacement. For full details of the Abpromise, please visit <https://www.abcam.co.jp/abpromise> or contact our technical team.

Terms and conditions

- Guarantee only valid for products bought direct from Abcam or one of our authorized distributors