

Anti-ISG15 antibody [EPR3446] ab133346

KO 評価済 リコンビナント RabMAb

6 References 画像数 4

製品の概要

製品名	Anti-ISG15 antibody [EPR3446]
製品の詳細	Rabbit monoclonal [EPR3446] to ISG15
由来種	Rabbit
アプリケーション	適用あり: WB, ICC/IF 適用なし: Flow Cyt, IHC-P or IP
種交差性	交差種: Human
免疫原	Synthetic peptide. This information is proprietary to Abcam and/or its suppliers.
ポジティブ・コントロール	WB: Daudi whole cell lysate (ab3951), IFN treated wild type HAP1 cell lysate, HeLa (untreated) and HeLa treated with 10 ng/ml IFN- α 1 for 16 hours whole cell lysates ICC/IF: HeLa cells
特記事項	<p>This product is a recombinant monoclonal antibody, which offers several advantages including:</p> <ul style="list-style-type: none"> - High batch-to-batch consistency and reproducibility - Improved sensitivity and specificity - Long-term security of supply - Animal-free production <p>For more information see here.</p> <p>Our RabMAb[®] technology is a patented hybridoma-based technology for making rabbit monoclonal antibodies. For details on our patents, please refer to RabMAb[®] patents.</p> <p>Mouse, Rat: We have preliminary internal testing data to indicate this antibody may not react with these species. Please contact us for more information.</p>

製品の特性

製品の状態	Liquid
保存方法	Shipped at 4°C. Store at -20°C. Stable for 12 months at -20°C.
バッファー	pH: 7.2 Preservative: 0.05% Sodium azide Constituents: 0.1% BSA, 40% Glycerol (glycerin, glycerine), 9.85% Tris glycine, 50% Tissue culture supernatant
精製度	Tissue culture supernatant

ポリ/モノ	モノクローナル
クローン名	EPR3446
アイソタイプ	IgG

アプリケーション

The Abpromise guarantee **Abpromise保証は、**次のテスト済みアプリケーションにおけるab133346の使用に適用されます
アプリケーションノートには、推奨の開始希釈率がありますが、適切な希釈率につきましてはご検討ください。

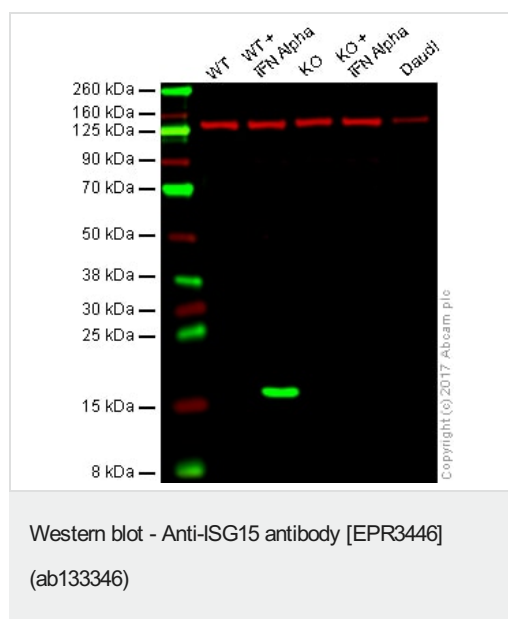
アプリケーション	Abreviews	特記事項
WB		1/1000 - 1/10000. Detects a band of approximately 15 kDa (predicted molecular weight: 18 kDa).
ICC/IF		1/100 - 1/250.

追加情報 Is unsuitable for Flow Cyt, IHC-P or IP.

ターゲット情報

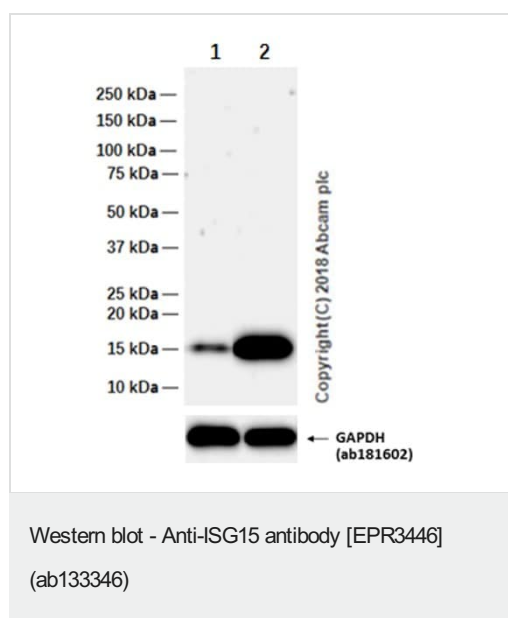
機能	<p>Ubiquitin-like protein that is conjugated to intracellular target proteins after IFN-alpha or IFN-beta stimulation. Its enzymatic pathway is partially distinct from that of ubiquitin, differing in substrate specificity and interaction with ligating enzymes. ISG15 conjugation pathway uses a dedicated E1 enzyme, but seems to converge with the Ub conjugation pathway at the level of a specific E2 enzyme. Targets include STAT1, SERPINA3G/SPI2A, JAK1, MAPK3/ERK1, PLCG1, EIF2AK2/PKR, MX1/MxA, and RIG-1. Deconjugated by USP18/UBP43. Shows specific chemotactic activity towards neutrophils and activates them to induce release of eosinophil chemotactic factors. May serve as a trans-acting binding factor directing the association of ligated target proteins to intermediate filaments. May also be involved in autocrine, paracrine and endocrine mechanisms, as in cell-to-cell signaling, possibly partly by inducing IFN-gamma secretion by monocytes and macrophages. Seems to display antiviral activity during viral infections.</p> <p>In response to IFN-tau secreted by the conceptus, may ligate to and regulate proteins involved in the release of prostaglandin F2-alpha (PGF), and thus prevent lysis of the corpus luteum and maintain the pregnancy.</p>
組織特異性	Detected in lymphoid cells, striated and smooth muscle, several epithelia and neurons.
配列類似性	Contains 2 ubiquitin-like domains.
細胞内局在	Cytoplasm. Secreted. UCRP conjugates seem to be noncovalently associated with the intermediate filaments and distributed in a punctate pattern. Also secreted.

画像



Lane 1: Wild type HAP1 whole cell lysate (20 µg)
Lane 2: ISG15 IFN treated wild type HAP1 whole cell lysate (20 µg)
Lane 3: ISG15 (KO) whole cell lysate (20 µg)
Lane 4: ISG15 (KO) IFN alpha treated whole cell lysate (20 µg)
Lane 5: Daudi whole cell lysate (20 µg)
Lanes 1 - 5: Merged signal (red and green). Green - ab133346 observed at 18 kDa. Red - loading control, **ab18058**, observed at 130 kDa.

ab133346 was shown to specifically react with ISG15 in IFN alpha1 induced wild-type HAP1 cells. Loss of signal was observed when knockout cell line was used. Wild-type and HAP1 IFN treated knockout samples were subjected to SDS-PAGE. Ab133346 and **ab18058** (Mouse anti Vinculin loading control) were incubated overnight at 4°C at 1000 dilution and 1/30000 dilution respectively. Blots were developed with Goat anti-Rabbit IgG H&L (IRDye® 800CW) preabsorbed **ab216773** and Goat anti-Mouse IgG H&L (IRDye® 680RD) preabsorbed **ab216776** secondary antibodies at 1/20000 dilution for 1 hour at room temperature before imaging.



All lanes : Anti-ISG15 antibody [EPR3446] (ab133346) at 1/2000 dilution

Lane 1 : Untreated HeLa (Human cervix adenocarcinoma epithelial cell) whole cell lysate

Lane 2 : HeLa (Human cervix adenocarcinoma epithelial cell) treated with 10 ng/ml IFN- α1 for 16 hours whole cell lysate

Lysates/proteins at 20 µg per lane.

Secondary

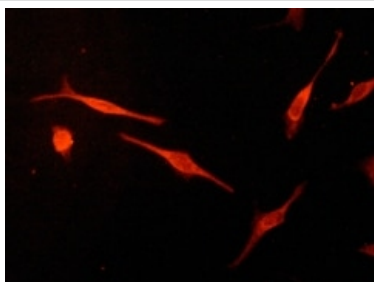
All lanes : Goat Anti-Rabbit IgG H&L (HRP) (**ab97051**) at 1/20000 dilution

Predicted band size: 18 kDa

Observed band size: 17 kDa

Exposure time: 3 minutes

Blocking/Diluting buffer and concentration: 5% NFDm/TBST



Immunofluorescent analysis of ISG15 in HeLa cells stained with ab133346 at a 1/100 dilution.

Immunocytochemistry/ Immunofluorescence - Anti-ISG15 antibody [EPR3446] (ab133346)

Why choose a recombinant antibody?



Research with confidence
Consistent and reproducible results



Long-term and scalable supply
Recombinant technology



Success from the first experiment
Confirmed specificity



Ethical standards compliant
Animal-free production

Anti-ISG15 antibody [EPR3446] (ab133346)

Please note: All products are "FOR RESEARCH USE ONLY. NOT FOR USE IN DIAGNOSTIC PROCEDURES"

Our Abpromise to you: Quality guaranteed and expert technical support

- Replacement or refund for products not performing as stated on the datasheet
- Valid for 12 months from date of delivery
- Response to your inquiry within 24 hours
- We provide support in Chinese, English, French, German, Japanese and Spanish
- Extensive multi-media technical resources to help you
- We investigate all quality concerns to ensure our products perform to the highest standards

If the product does not perform as described on this datasheet, we will offer a refund or replacement. For full details of the Abpromise, please visit <https://www.abcam.co.jp/abpromise> or contact our technical team.

Terms and conditions

-
- Guarantee only valid for products bought direct from Abcam or one of our authorized distributors