


Anti-IRS1 (phospho S616) antibody ab4776

1 References [画像数 3](#)

製品の概要

製品名	Anti-IRS1 (phospho S616) antibody
製品の詳細	Rabbit polyclonal to IRS1 (phospho S616)
由来種	Rabbit
アプリケーション	適用あり: IHC-P, WB
種交差性	交差種: Mouse, Human 交差が予測される動物種: Rat 
免疫原	Synthetic peptide corresponding to IRS1 (phospho S616).
ポジティブ・コントロール	WB: HEK-293T cells. IHC-P: Human breast carcinoma tissue, mouse skeletal muscle tissue.
特記事項	<p>The Life Science industry has been in the grips of a reproducibility crisis for a number of years. Abcam is leading the way in addressing this with our range of recombinant monoclonal antibodies and knockout edited cell lines for gold-standard validation. Please check that this product meets your needs before purchasing.</p> <p>If you have any questions, special requirements or concerns, please send us an inquiry and/or contact our Support team ahead of purchase. Recommended alternatives for this product can be found below, along with publications, customer reviews and Q&As</p>

製品の特性

製品の状態	Liquid
保存方法	Shipped at 4°C. Upon delivery aliquot. Store at -20°C. Avoid freeze / thaw cycle.
バッファー	<p>pH: 7.30</p> <p>Preservative: 0.05% Sodium azide</p> <p>Constituents: PBS, 0.1% BSA, 50% Glycerol</p> <p>BSA is IgG and protease free</p>
精製度	Immunogen affinity purified
特記事項 (精製)	Purified from rabbit serum by sequential epitope-specific chromatography. The antibody has been negatively preadsorbed using a non-phosphopeptide corresponding to the site of phosphorylation to remove antibody that is reactive with non-phosphorylated insulin receptor substrate 1 (IRS 1).
ポリ/モノ	ポリクローナル

アイソタイプ

IgG

アプリケーション

The Abpromise guarantee

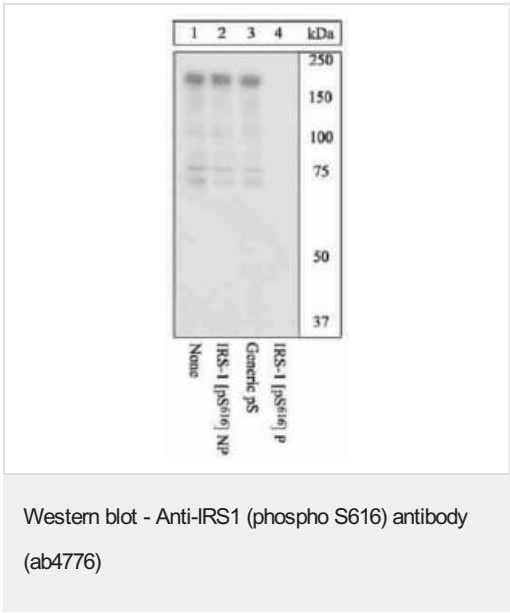
Abpromise保証は、次のテスト済みアプリケーションにおけるab4776の使用に適用されます
アプリケーションノートには、推奨の開始希釈率がありますが、適切な希釈率につきましてはご検討ください。

アプリケーション	Abreviews	特記事項
IHC-P		1/10 - 1/100. Perform heat mediated antigen retrieval with citrate buffer pH 6 before commencing with IHC staining protocol.
WB		1/1000. Predicted molecular weight: 165 kDa.

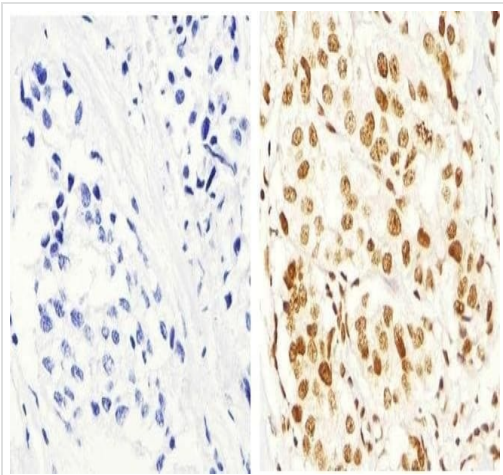
ターゲット情報

機能	May mediate the control of various cellular processes by insulin. When phosphorylated by the insulin receptor binds specifically to various cellular proteins containing SH2 domains such as phosphatidylinositol 3-kinase p85 subunit or GRB2. Activates phosphatidylinositol 3-kinase when bound to the regulatory p85 subunit.
関連疾患	Polymorphisms in IRS1 may be involved in the etiology of non-insulin-dependent diabetes mellitus (NIDDM) [MIM:125853].
配列類似性	Contains 1 IRS-type PTB domain. Contains 1 PH domain.
翻訳後修飾	Serine phosphorylation of IRS1 is a mechanism for insulin resistance. Ser-312 phosphorylation inhibits insulin action through disruption of IRS1 interaction with the insulin receptor. Phosphorylation of Tyr-896 is required for GRB2-binding.

画像

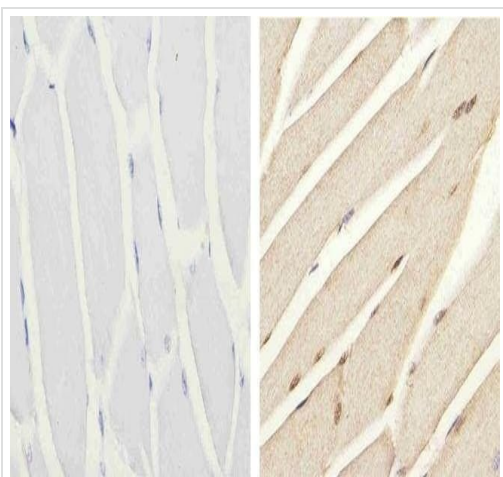


Extracts of 293T cells transfected with wild-type human IRS1 and treated with 100 ng/mL TPA for 30 minutes were resolved by SDS-PAGE on a 10% Tris-glycine gel and transferred to PVDF.



Immunohistochemistry (Formalin/PFA-fixed paraffin-embedded sections) - Anti-IRS1 (phospho S616) antibody (ab4776)

Immunohistochemistry analysis of IRS1 (phospho S616) showing staining in the nucleus of paraffin-embedded human breast carcinoma tissue (right) compared to a negative control without primary antibody (left). Antigen retrieval was performed using 10mM sodium citrate (pH 6.0), microwaved for 8-15 min. Tissues were blocked in 3% H₂O₂-methanol for 15 min at room temperature, washed with ddH₂O and PBS, and then probed with ab4776 diluted in 3% BSA-PBS at a dilution of 1/100 overnight at 4°C in a humidified chamber. Tissues were washed extensively in PBST and detection was performed using an HRP-conjugated secondary antibody followed by colorimetric detection using a DAB kit. Tissues were counterstained with hematoxylin and dehydrated with ethanol and xylene to prep for mounting.



Immunohistochemistry (Formalin/PFA-fixed paraffin-embedded sections) - Anti-IRS1 (phospho S616) antibody (ab4776)

Immunohistochemistry analysis of IRS1 (phospho S616) showing staining in the nucleus of paraffin-embedded mouse skeletal muscle tissue (right) compared to a negative control without primary antibody (left). Antigen retrieval was performed using 10mM sodium citrate (pH 6.0), microwaved for 8-15 min. Following antigen retrieval, tissues were blocked in 3% H₂O₂-methanol for 15 min at room temperature, washed with ddH₂O and PBS, and then probed with ab4776 diluted in 3% BSA-PBS at a dilution of 1/20 overnight at 4°C in a humidified chamber. Tissues were washed extensively in PBST and detection was performed using an HRP-conjugated secondary antibody followed by colorimetric detection using a DAB kit. Tissues were counterstained with hematoxylin and dehydrated with ethanol and xylene to prep for mounting.

Please note: All products are "FOR RESEARCH USE ONLY. NOT FOR USE IN DIAGNOSTIC PROCEDURES"

Our Abpromise to you: Quality guaranteed and expert technical support

- Replacement or refund for products not performing as stated on the datasheet
- Valid for 12 months from date of delivery
- Response to your inquiry within 24 hours
- We provide support in Chinese, English, French, German, Japanese and Spanish
- Extensive multi-media technical resources to help you
- We investigate all quality concerns to ensure our products perform to the highest standards

If the product does not perform as described on this datasheet, we will offer a refund or replacement. For full details of the Abpromise,

please visit <https://www.abcam.co.jp/abpromise> or contact our technical team.

Terms and conditions

- Guarantee only valid for products bought direct from Abcam or one of our authorized distributors