


Anti-IRS1 (phospho S312) antibody ab4865

3 References [画像数 1](#)

製品の概要

製品名	Anti-IRS1 (phospho S312) antibody
製品の詳細	Rabbit polyclonal to IRS1 (phospho S312)
由来種	Rabbit
アプリケーション	適用あり: WB
種交差性	交差種: Human 交差が予測される動物種: Mouse, Rat, Pig 
免疫原	Synthetic peptide corresponding to Human IRS1 (phospho S312).
ポジティブ・コントロール	Phorbol ester stimulated (TPA) Chinese Hamster Ovary cell line expressing human insulin receptor (CHO-T) and transiently transfected with a plasmid encoding human IRS 1.
特記事項	<p>The Life Science industry has been in the grips of a reproducibility crisis for a number of years. Abcam is leading the way in addressing this with our range of recombinant monoclonal antibodies and knockout edited cell lines for gold-standard validation. Please check that this product meets your needs before purchasing.</p> <p>If you have any questions, special requirements or concerns, please send us an inquiry and/or contact our Support team ahead of purchase. Recommended alternatives for this product can be found below, along with publications, customer reviews and Q&As</p>

製品の特性

製品の状態	Liquid
保存方法	Shipped at 4°C. Upon delivery aliquot and store at -20°C or -80°C. Avoid repeated freeze / thaw cycles.
バッファー	pH: 7.30 Preservative: 0.05% Sodium azide Constituents: PBS, Glycerol (glycerin, glycerine), 0.1% BSA
精製度	Immunogen affinity purified
特記事項 (精製)	Purified from rabbit serum by sequential epitope-specific chromatography. The antibody has been negatively preadsorbed using a non-phosphopeptide corresponding to the site of phosphorylation to remove antibody that is reactive with non-phosphorylated IRS 1. The final product is generated by affinity chromatography using an IRS 1-derived peptide phosphorylated at serine 312.

ポリモノ
アイソタイプ

ポリクローナル
IgG

アプリケーション

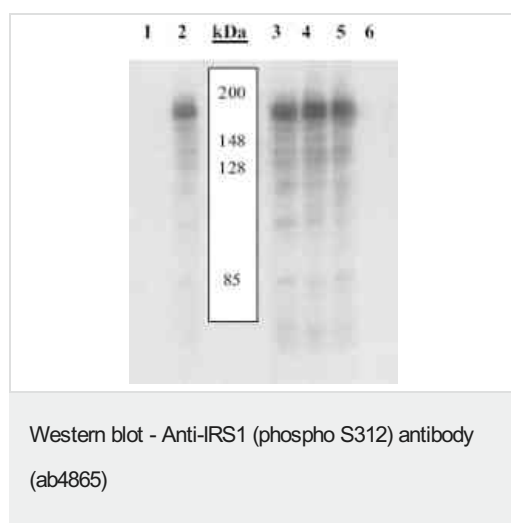
The Abpromise guarantee Abpromise保証は、 次のテスト済みアプリケーションにおけるab4865の使用に適用されます
アプリケーションノートには、推奨の開始希釈率がありますが、適切な希釈率につきましてはご検討ください。

アプリケーション	Abreviews	特記事項
WB		1/1000. Predicted molecular weight: 165 kDa.

ターゲット情報

機能	May mediate the control of various cellular processes by insulin. When phosphorylated by the insulin receptor binds specifically to various cellular proteins containing SH2 domains such as phosphatidylinositol 3-kinase p85 subunit or GRB2. Activates phosphatidylinositol 3-kinase when bound to the regulatory p85 subunit.
関連疾患	Polymorphisms in IRS1 may be involved in the etiology of non-insulin-dependent diabetes mellitus (NIDDM) [MIM:125853].
配列類似性	Contains 1 IRS-type PTB domain. Contains 1 PH domain.
翻訳後修飾	Serine phosphorylation of IRS1 is a mechanism for insulin resistance. Ser-312 phosphorylation inhibits insulin action through disruption of IRS1 interaction with the insulin receptor. Phosphorylation of Tyr-896 is required for GRB2-binding.

画像



Peptide Competition and Phosphatase Stripping: Extracts prepared from CHO-T cells transiently transfected with wild-type human IRS 1 and treated with TPA were resolved by SDS-PAGE on a 10% polyacrylamide gel and transferred to PVDF. Membranes were treated with lambda phosphatase (1) or left untreated (2-6), blocked with a 5% BSA-TBST buffer overnight at 4°C, then incubated with 0.50 µg/mL ab4865 antibody for two hours at room temperature in a 3% BSA-TBST buffer, following prior incubation with: no peptide (1-3), the non-phosphopeptide corresponding to the immunogen (4), a generic phosphoserine containing peptide (5), or, the phosphopeptide immunogen (6). After washing, membranes were incubated with goat F(ab')₂ anti-rabbit IgG alkaline phosphatase and signals were detected using the Tropix WesternStar method. The data show that only the peptide corresponding to ab4865 blocks the antibody signal, thereby demonstrating the specificity of the anti

Please note: All products are "FOR RESEARCH USE ONLY. NOT FOR USE IN DIAGNOSTIC PROCEDURES"

Our Abpromise to you: Quality guaranteed and expert technical support

- Replacement or refund for products not performing as stated on the datasheet
- Valid for 12 months from date of delivery
- Response to your inquiry within 24 hours

- We provide support in Chinese, English, French, German, Japanese and Spanish
- Extensive multi-media technical resources to help you
- We investigate all quality concerns to ensure our products perform to the highest standards

If the product does not perform as described on this datasheet, we will offer a refund or replacement. For full details of the Abpromise, please visit <https://www.abcam.co.jp/abpromise> or contact our technical team.

Terms and conditions

- Guarantee only valid for products bought direct from Abcam or one of our authorized distributors