

Anti-IRS1 antibody ab52167

[56 References](#) [画像数 3](#)

製品の概要

製品名	Anti-IRS1 antibody
製品の詳細	Rabbit polyclonal to IRS1
由来種	Rabbit
アプリケーション	適用あり: ELISA, WB, IHC-P, ICC/IF
種交差性	交差種: Mouse, Rat, Human
免疫原	Synthetic peptide corresponding to Human IRS1. Synthetic non-phosphopeptide derived from human IRS1 around the phosphorylation site of serine 307 (T-E-S-I-T). Database link: P35568

特記事項

The Life Science industry has been in the grips of a reproducibility crisis for a number of years. Abcam is leading the way in addressing this with our range of recombinant monoclonal antibodies and knockout edited cell lines for gold-standard validation. Please check that this product meets your needs before purchasing.

If you have any questions, special requirements or concerns, please send us an inquiry and/or contact our Support team ahead of purchase. Recommended alternatives for this product can be found below, along with publications, customer reviews and Q&As

製品の特性

製品の状態	Liquid
保存方法	Shipped at 4°C. Upon delivery aliquot and store at -20°C. Avoid freeze / thaw cycles.
バッファー	pH: 7 Preservative: 0.02% Sodium azide Constituents: 50% Glycerol, 0.87% Sodium chloride, PBS
精製度	Without Mg ⁺² and Ca ⁺² Immunogen affinity purified
ポリ/モノ	ポリクローナル
アイソタイプ	IgG

アプリケーション

The Abpromise guarantee

Abpromise保証は、次のテスト済みアプリケーションにおけるab52167の使用に適用されます

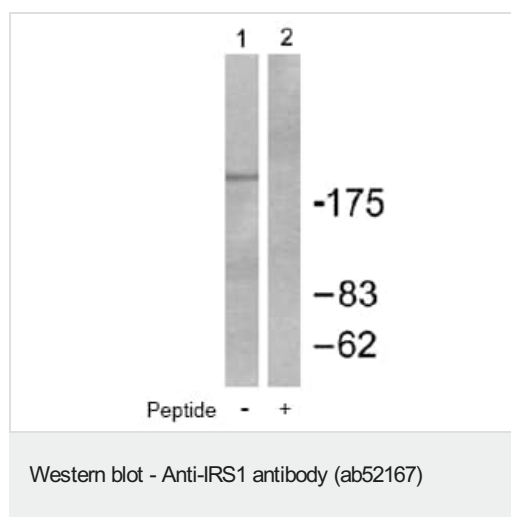
アプリケーションノートには、推奨の開始希釈率がありますが、適切な希釈率につきましてはご検討ください。

アプリケーション	Abreviews	特記事項
ELISA		Use at an assay dependent concentration.
WB		1/500 - 1/1000. Predicted molecular weight: 132 kDa.
IHC-P		1/50 - 1/100. Antigen retrieval: Microwave method - put the slice into 10 mmol/L citrate buffer (pH 6.0), microwave high temperature for 5 minutes, and then medium temperature for 15 minutes. Primary antibody incubation: 1 hour at 37°C Secondary antibody: Poly-HRP-Anti Mouse/Rabbit IgG, 50 µL for
ICC/IF		Use a concentration of 1 - 5 µg/ml.

ターゲット情報

機能	May mediate the control of various cellular processes by insulin. When phosphorylated by the insulin receptor binds specifically to various cellular proteins containing SH2 domains such as phosphatidylinositol 3-kinase p85 subunit or GRB2. Activates phosphatidylinositol 3-kinase when bound to the regulatory p85 subunit.
関連疾患	Polymorphisms in IRS1 may be involved in the etiology of non-insulin-dependent diabetes mellitus (NIDDM) [MIM:125853].
配列類似性	Contains 1 IRS-type PTB domain. Contains 1 PH domain.
翻訳後修飾	Serine phosphorylation of IRS1 is a mechanism for insulin resistance. Ser-312 phosphorylation inhibits insulin action through disruption of IRS1 interaction with the insulin receptor. Phosphorylation of Tyr-896 is required for GRB2-binding.

画像



All lanes : Anti-IRS1 antibody (ab52167) at 1/500 dilution

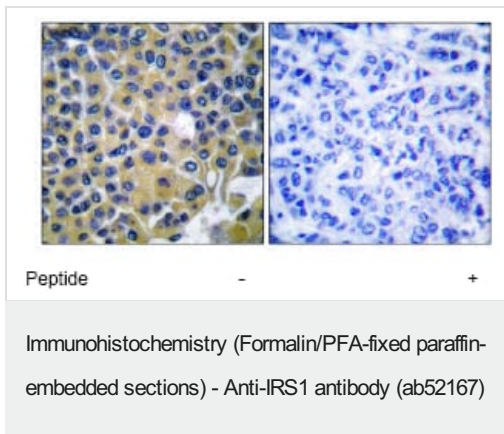
Lane 1 : A431 cell extract

Lane 2 : A431 cell extract with immunising peptide

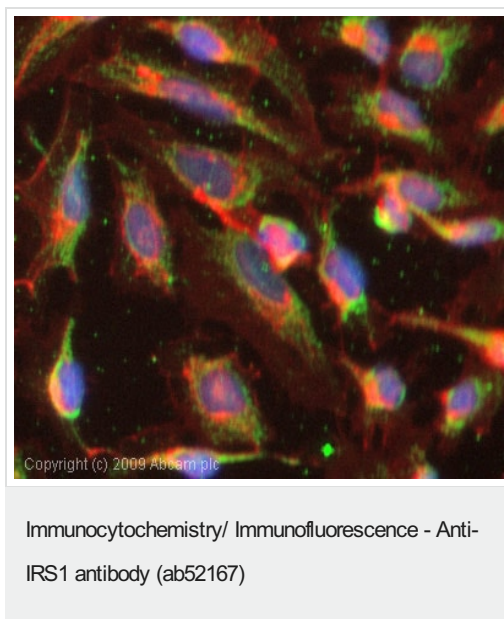
Lysates/proteins at 5 µg per lane.

Predicted band size: 132 kDa

Observed band size: >175 kDa



ab52167 at 1/50 dilution staining IRS1 in human breast carcinoma by Immunohistochemistry, Paraffin embedded tissue, in the absence or presence of the immunising peptide.



ICC/IF image of ab52167 stained MCF7 cells. The cells were 4% PFA fixed (10 min) and then incubated in 1%BSA / 10% normal goat serum / 0.3M glycine in 0.1% PBS-Tween for 1h to permeabilise the cells and block non-specific protein-protein interactions. The cells were then incubated with the antibody (ab52167, 1µg/ml) overnight at +4°C. The secondary antibody (green) was Alexa Fluor® 488 goat anti-rabbit IgG (H+L) used at a 1/1000 dilution for 1h. Alexa Fluor® 594 WGA was used to label plasma membranes (red) at a 1/200 dilution for 1h. DAPI was used to stain the cell nuclei (blue) at a concentration of 1.43µM.

Please note: All products are "FOR RESEARCH USE ONLY. NOT FOR USE IN DIAGNOSTIC PROCEDURES"

Our Abpromise to you: Quality guaranteed and expert technical support

- Replacement or refund for products not performing as stated on the datasheet
- Valid for 12 months from date of delivery
- Response to your inquiry within 24 hours
- We provide support in Chinese, English, French, German, Japanese and Spanish
- Extensive multi-media technical resources to help you
- We investigate all quality concerns to ensure our products perform to the highest standards

If the product does not perform as described on this datasheet, we will offer a refund or replacement. For full details of the Abpromise, please visit <https://www.abcam.co.jp/abpromise> or contact our technical team.

Terms and conditions

- Guarantee only valid for products bought direct from Abcam or one of our authorized distributors