

### Anti-IRF6 antibody [OT12A12] ab123880

★★★★★ [1 Abreviews](#) [2 References](#) [画像数 7](#)

#### 製品の概要

製品名	Anti-IRF6 antibody [OT12A12]
製品の詳細	Mouse monoclonal [OT12A12] to IRF6
由来種	Mouse
アプリケーション	<b>適用あり:</b> Flow Cyt (Intra), WB, IHC-P, ICC/IF
種交差性	<b>交差種:</b> Human, African green monkey, Recombinant fragment
免疫原	Recombinant full length protein corresponding to Human IRF6. Produced in HEK293 cell (NP_006138) Database link: <a href="#">O14896</a>
ポジティブ・コントロール	WB: HEK293T cells transfected with pCMV6-ENTRY IRF6 cDNA IHC-P: adenocarcinoma of Human colon tissue, Human kidney tissue, carcinoma of Human lung tissue, adenocarcinoma of Human endometrium tissue ICC/IF: COS7 cells transiently transfected by pCMV6-ENTRY IRF6 Flow Cyt (Intra): HEK293T cells transfected with pCMV6-ENTRY IRF6 overexpress plasmid
特記事項	<p>The Life Science industry has been in the grips of a reproducibility crisis for a number of years. Abcam is leading the way in addressing this with our range of recombinant monoclonal antibodies and knockout edited cell lines for gold-standard validation. Please check that this product meets your needs before purchasing.</p> <p>If you have any questions, special requirements or concerns, please send us an inquiry and/or contact our Support team ahead of purchase. Recommended alternatives for this product can be found below, along with publications, customer reviews and Q&amp;As</p>

#### 製品の特性

製品の状態	Liquid
保存方法	Shipped at 4°C. Upon delivery aliquot and store at -20°C. Avoid repeated freeze / thaw cycles.
バッファー	pH: 7.30 Preservative: 0.02% Sodium azide Constituents: 50% Glycerol, 1% BSA, PBS
精製度	Affinity purified
特記事項 (精製)	Purified from cell culture supernatant by affinity chromatography.
ポリ/モノ	モノクローナル
クローン名	OT12A12

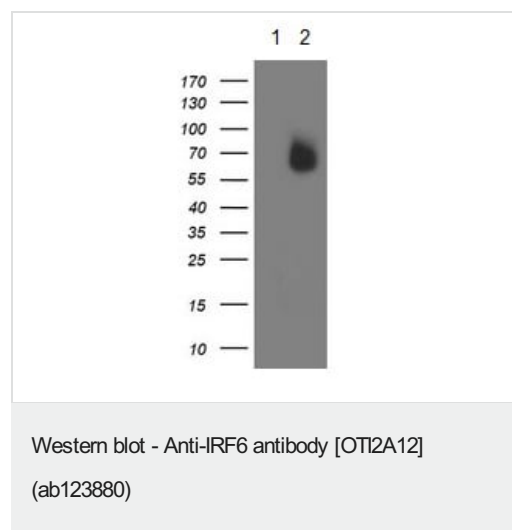
アプリケーション

**The Abpromise guarantee**      **Abpromise保証は、次のテスト済みアプリケーションにおけるab123880の使用に適用されます**  
 アプリケーションノートには、推奨の開始希釈率がありますが、適切な希釈率につきましてはご確認ください。

アプリケーション	Abreviews	特記事項
Flow Cyt (Intra)		1/100. <b>ab170192</b> - Mouse monoclonal IgG2b, is suitable for use as an isotype control with this antibody.
WB		1/2000. Predicted molecular weight: 53 kDa.
IHC-P		1/150.
ICC/IF	★★★★☆ (1)	1/100.

ターゲット情報

機能	Probable DNA-binding transcriptional activator. Key determinant of the keratinocyte proliferation-differentiation switch involved in appropriate epidermal development (By similarity). Plays a role in regulating mammary epithelial cell proliferation.
組織特異性	Expressed in normal mammary epithelial cells. Expression is reduced or absent in breast carcinomas.
関連疾患	<p>Defects in IRF6 are a cause of van der Woude syndrome (VWS) [MIM:119300]; also known as lip-pit syndrome (LPS). It is an autosomal dominant developmental disorder characterized by lower lip pits, cleft lip and/or cleft palate. Penetrance is incomplete. Van der Woude and popliteal pterygium syndrome are allelic disorders.</p> <p>Defects in IRF6 are the cause of popliteal pterygium syndrome (PPS) [MIM:119500]. PPS is an autosomal dominant developmental disorder characterized by cleft lip and/or cleft palate, and skin and genital anomalies. Penetrance is incomplete and expressivity is variable. It shows orofacial phenotypic similarities with van der Woude syndrome. Van der Woude and popliteal pterygium syndrome are allelic disorders.</p> <p>Genetic variation in IRF6 is associated with non-syndromic orofacial cleft type 6 (OFC6) [MIM:608864]; also called non-syndromic cleft lip with or without cleft palate 6. Non-syndromic orofacial cleft is a common birth defect consisting of cleft lips with or without cleft palate. Cleft lips are associated with cleft palate in two-third of cases. A cleft lip can occur on one or both sides and range in severity from a simple notch in the upper lip to a complete opening in the lip extending into the floor of the nostril and involving the upper gum.</p>
配列類似性	<p>Belongs to the IRF family.</p> <p>Contains 1 IRF tryptophan pentad repeat DNA-binding domain.</p>
翻訳後修飾	Phosphorylated. Phosphorylation status depends on the cell cycle and is a signal for ubiquitination and proteasome-mediated degradation.
細胞内局在	Nucleus. Cytoplasm. Translocates to nucleus in response to an activating signal.



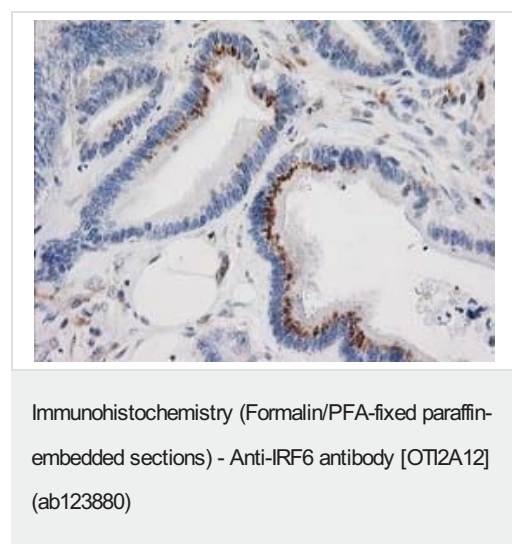
**All lanes :** Anti-IRF6 antibody [OT12A12] (ab123880) at 1/2000 dilution

**Lane 1 :** HEK-293T (human epithelial cell line from embryonic kidney transformed with large T antigen) cells transfected with pCMV6-ENTRY control cDNA

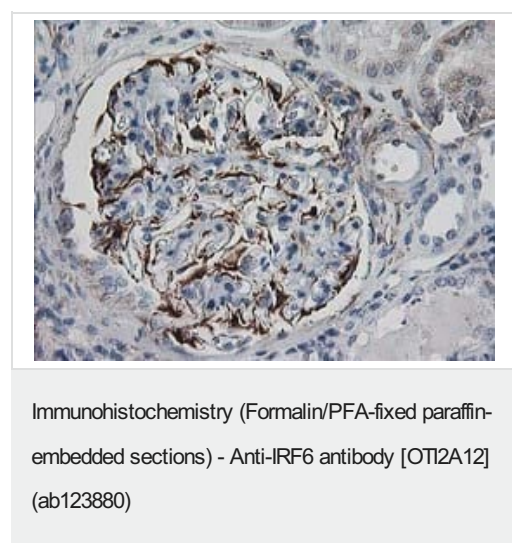
**Lane 2 :** HEK-293T cells transfected with pCMV6-ENTRY IRF6 cDNA

Lysates/proteins at 5 µg per lane.

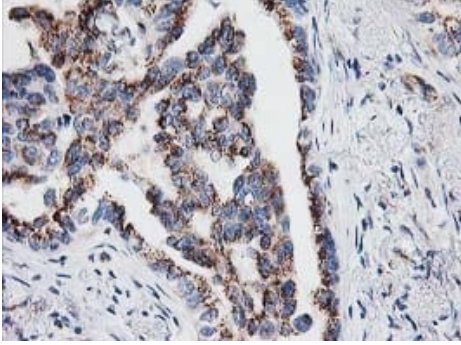
**Predicted band size:** 53 kDa



Paraffin-embedded human colon adenocarcinoma tissue stained for IRF6 using ab123880 at 1/150 dilution in immunohistochemical analysis.

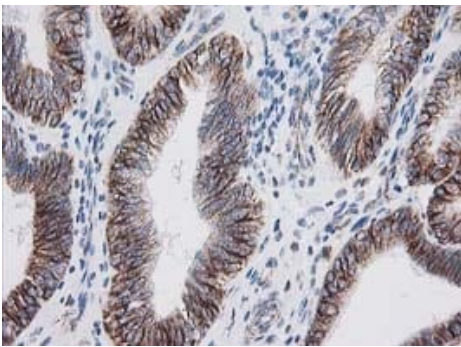


Paraffin-embedded human kidney tissue stained for IRF6 using ab123880 at 1/150 dilution in immunohistochemical analysis.



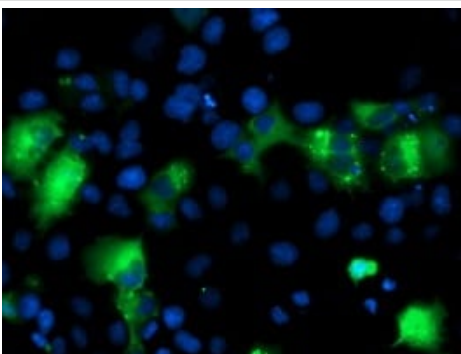
Paraffin-embedded human lung carcinoma tissue stained for IRF6 using ab123880 at 1/150 dilution in immunohistochemical analysis.

Immunohistochemistry (Formalin/PFA-fixed paraffin-embedded sections) - Anti-IRF6 antibody [OT12A12] (ab123880)



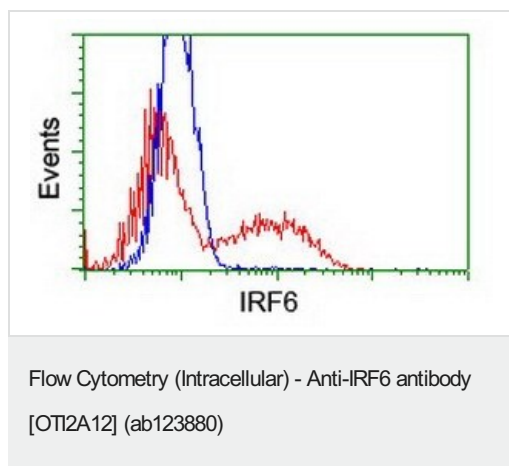
Paraffin-embedded human endometrium adenocarcinoma tissue stained for IRF6 using ab123880 at 1/150 dilution in immunohistochemical analysis.

Immunohistochemistry (Formalin/PFA-fixed paraffin-embedded sections) - Anti-IRF6 antibody [OT12A12] (ab123880)



COS-7 (African green monkey kidney fibroblast-like cell line) cells transiently transfected using pCMV6-ENTRY IRF6 stained for IRF6 (green) in ICC/IF.

Immunocytochemistry/ Immunofluorescence - Anti-IRF6 antibody [OT12A12] (ab123880)



Flow cytometric analysis of HEK-293T (human epithelial cell line from embryonic kidney transformed with large T antigen) cells transfected with either pCMV6-ENTRY IRF6 overexpress plasmid (Red), or empty vector control plasmid (Blue).

**Please note:** All products are "FOR RESEARCH USE ONLY. NOT FOR USE IN DIAGNOSTIC PROCEDURES"

#### Our Abpromise to you: Quality guaranteed and expert technical support

---

- Replacement or refund for products not performing as stated on the datasheet
- Valid for 12 months from date of delivery
- Response to your inquiry within 24 hours
- We provide support in Chinese, English, French, German, Japanese and Spanish
- Extensive multi-media technical resources to help you
- We investigate all quality concerns to ensure our products perform to the highest standards

If the product does not perform as described on this datasheet, we will offer a refund or replacement. For full details of the Abpromise, please visit <https://www.abcam.co.jp/abpromise> or contact our technical team.

#### Terms and conditions

---

- Guarantee only valid for products bought direct from Abcam or one of our authorized distributors