

### Anti-IRE1 (phospho S724) antibody [EPR5253] ab124945

リコンビナント **RabMAb**

★★★★★ **7 Abreviews** **92 References** 画像数 4

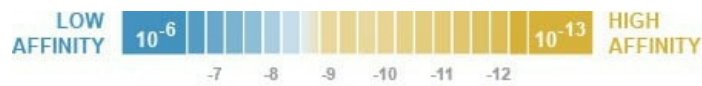
#### 製品の概要

製品名	Anti-IRE1 (phospho S724) antibody [EPR5253]
製品の詳細	Rabbit monoclonal [EPR5253] to IRE1 (phospho S724)
由来種	Rabbit
アプリケーション	<b>適用あり:</b> WB, Dot blot <b>適用なし:</b> Flow Cyt, ICC/IF or IHC-P
種交差性	<b>交差種:</b> Human
免疫原	Synthetic peptide within Human IRE1 aa 700-800 (phospho S724). The exact sequence is proprietary. Database link: <a href="#">O75460</a>
ポジティブ・コントロール	WB: Thapsigargin treated HeLa (Human cervix adenocarcinoma epithelial cell) whole cell lysate, DTT treated HEK-293 (Human embryonic kidney epithelial cell) whole cell lysate.
特記事項	This product is a recombinant monoclonal antibody, which offers several advantages including: <ul style="list-style-type: none"> <li>- High batch-to-batch consistency and reproducibility</li> <li>- Improved sensitivity and specificity</li> <li>- Long-term security of supply</li> <li>- Animal-free production</li> </ul> For more information <a href="#">see here</a> . Our RabMAb <sup>®</sup> technology is a patented hybridoma-based technology for making rabbit monoclonal antibodies. For details on our patents, please refer to <a href="#">RabMAb<sup>®</sup> patents</a> .  Mouse, Rat: We have preliminary internal testing data to indicate this antibody may not react with these species. Please contact us for more information.

#### 製品の特性

製品の状態	Liquid
保存方法	Shipped at 4°C. Store at +4°C short term (1-2 weeks). Upon delivery aliquot. Store at -20°C. Stable for 12 months at -20°C.
解離定数 (K <sub>D</sub> 値)	K <sub>D</sub> = 1.10 x 10 <sup>-10</sup> M





[Learn more about K<sub>D</sub>](#)

バッファー	pH: 7.20 Preservative: 0.01% Sodium azide Constituents: 40% Glycerol, 0.05% BSA, 59% PBS
精製度	Protein A purified
ポリ/モノ	モノクローナル
クローン名	EPR5253
アイソタイプ	IgG

## アプリケーション

**The Abpromise guarantee** Abpromise保証は、 次のテスト済みアプリケーションにおけるab124945の使用に適用されます  
アプリケーションノートには、推奨の開始希釈率がありますが、適切な希釈率につきましてはご検討ください。

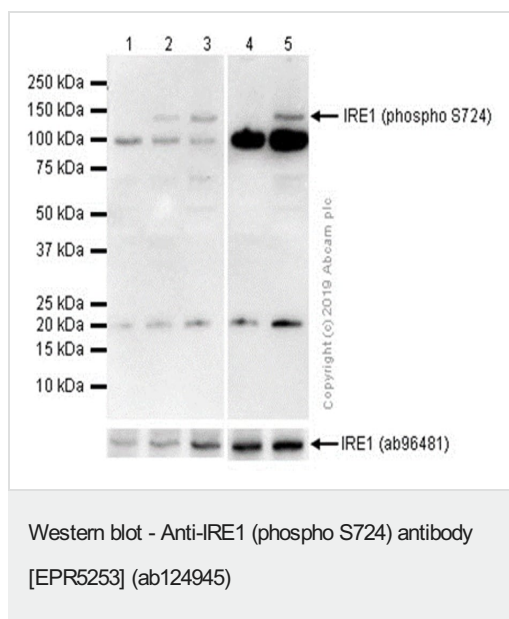
アプリケーション	Abreviews	特記事項
WB	★★★★★ (5)	1/200 - 1/10000. Predicted molecular weight: 110 kDa.
Dot blot		1/1000.

**追加情報** Is unsuitable for Flow Cyt, ICC/IF or IHC-P.

## ターゲット情報

機能	Senses unfolded proteins in the lumen of the endoplasmic reticulum via its N-terminal domain which leads to enzyme auto-activation. The active endoribonuclease domain splices XBP1 mRNA to generate a new C-terminus, converting it into a potent unfolded-protein response transcriptional activator and triggering growth arrest and apoptosis.
組織特異性	Ubiquitously expressed. High levels observed in pancreatic tissue.
配列類似性	Belongs to the protein kinase superfamily. Ser/Thr protein kinase family. Contains 1 KEN domain. Contains 1 protein kinase domain.
翻訳後修飾	Autophosphorylated.
細胞内局在	Endoplasmic reticulum membrane.

## 画像



**All lanes :** Anti-IRE1 (phospho S724) antibody [EPR5253] (ab124945) at 1/200 dilution

**Lane 1 :** HeLa (Human cervix adenocarcinoma epithelial cell) whole cell lysates

**Lane 2 :** HeLa (Human cervix adenocarcinoma epithelial cell) treated with 1uM Thapsigargin for 1 hour whole cell lysates

**Lane 3 :** HeLa (Human cervix adenocarcinoma epithelial cell) treated with 1uM Thapsigargin for 6 hours whole cell lysates

**Lane 4 :** HEK-293 (Human embryonic kidney epithelial cell) whole cell lysates

**Lane 5 :** HEK-293 (Human embryonic kidney epithelial cell) treated with 10mM DTT for 1 hour whole cell lysates

Lysates/proteins at 20 µg per lane.

## Secondary

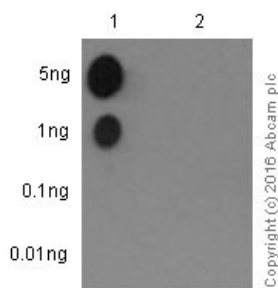
**All lanes :** Goat Anti-Rabbit IgG H&L (HRP) ([ab97051](#)) at 1/20000 dilution

**Predicted band size:** 110 kDa

**Observed band size:** 110 kDa

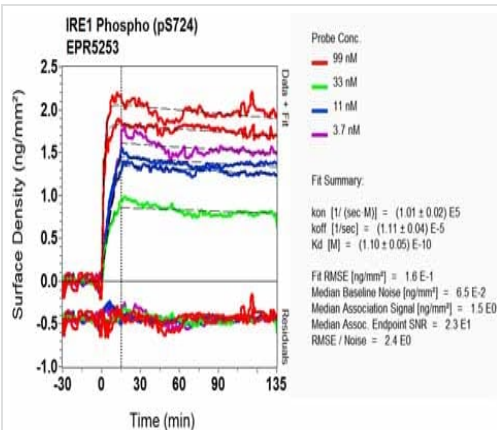
**Exposure time:** 180 seconds

**Blocking/Diluting buffer and concentration:** 5% NFDM/TBST.



Dot Blot - Anti-IRE1 (phospho S724) antibody  
[EPR5253] (ab124945)

Dot Blot analysis of Lane 1: IRE1 (pS724) phospho peptide and Lane 2: IRE1 non-phospho peptide labeling IRE1 (phospho S724) with ab124945 at 1/1000 dilution. 5% NFDm/TBST was used as the diluting and blocking buffer. [ab97051](#) Goat Anti-Rabbit IgG, (H+L), Peroxidase conjugated was used as the secondary antibody at 1/100000 dilution. Exposure time: 3 minutes.



OIR-D Scanning - Anti-IRE1 (phospho S724)  
antibody [EPR5253] (ab124945)

Equilibrium dissociation constant ( $K_D$ )

Learn more about  $K_D$

[Click here to learn more about  \$K\_D\$](#)

Why choose a  
recombinant antibody?



**Research with  
confidence**  
Consistent and  
reproducible results



**Long-term and  
scalable supply**  
Recombinant  
technology



**Success from the  
first experiment**  
Confirmed  
specificity



**Ethical standards  
compliant**  
Animal-free  
production

Anti-IRE1 (phospho S724) antibody [EPR5253]  
(ab124945)

**Please note:** All products are "FOR RESEARCH USE ONLY. NOT FOR USE IN DIAGNOSTIC PROCEDURES"

### **Our Abpromise to you: Quality guaranteed and expert technical support**

---

- Replacement or refund for products not performing as stated on the datasheet
- Valid for 12 months from date of delivery
- Response to your inquiry within 24 hours
  
- We provide support in Chinese, English, French, German, Japanese and Spanish
- Extensive multi-media technical resources to help you
- We investigate all quality concerns to ensure our products perform to the highest standards

If the product does not perform as described on this datasheet, we will offer a refund or replacement. For full details of the Abpromise, please visit <https://www.abcam.co.jp/abpromise> or contact our technical team.

### **Terms and conditions**

---

- Guarantee only valid for products bought direct from Abcam or one of our authorized distributors