

# Anti-IRE1 antibody ab37117

**3 References** [画像数 2](#)

### 製品の概要

製品名	Anti-IRE1 antibody
製品の詳細	Rabbit polyclonal to IRE1
由来種	Rabbit
アプリケーション	<b>適用あり:</b> ICC/IF, WB
種交差性	<b>交差種:</b> Mouse
免疫原	Synthetic peptide corresponding to 15 amino acids near the N terminus of the human IRE1 protein.
ポジティブ・コントロール	A20 cell lysate.
特記事項	<p>The Life Science industry has been in the grips of a reproducibility crisis for a number of years. Abcam is leading the way in addressing this with our range of recombinant monoclonal antibodies and knockout edited cell lines for gold-standard validation. Please check that this product meets your needs before purchasing.</p> <p>If you have any questions, special requirements or concerns, please send us an inquiry and/or contact our Support team ahead of purchase. Recommended alternatives for this product can be found below, along with publications, customer reviews and Q&amp;As</p>

### 製品の特性

製品の状態	Liquid
保存方法	Shipped at 4°C. Store at +4°C.
バッファー	pH: 7.2 Preservative: 0.02% Sodium azide Constituent: PBS
精製度	Immunogen affinity purified
ポリ/モノ	ポリクローナル
アイソタイプ	IgG

### アプリケーション

The Abpromise guarantee

**Abpromise保証は、** 次のテスト済みアプリケーションにおけるab37117の使用に適用されます

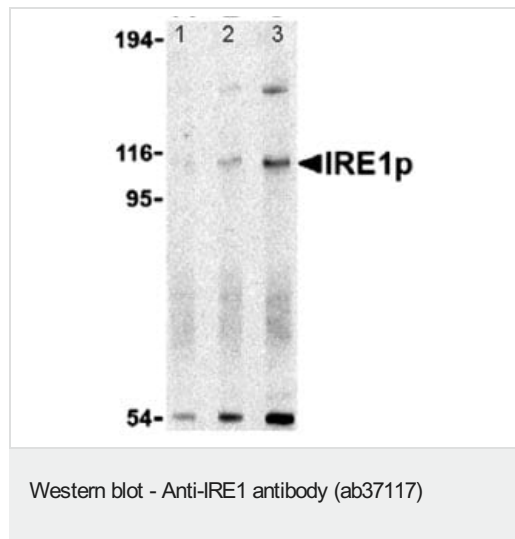
アプリケーションノートには、推奨の開始希釈率がありますが、適切な希釈率につきましてはご確認ください。

アプリケーション	Abreviews	特記事項
ICC/IF		Use a concentration of 1 µg/ml.
WB		Use a concentration of 0.5 - 2 µg/ml. Detects a band of approximately 107 kDa (predicted molecular weight: 110 kDa).

## ターゲット情報

機能	Senses unfolded proteins in the lumen of the endoplasmic reticulum via its N-terminal domain which leads to enzyme auto-activation. The active endoribonuclease domain splices XBP1 mRNA to generate a new C-terminus, converting it into a potent unfolded-protein response transcriptional activator and triggering growth arrest and apoptosis.
組織特異性	Ubiquitously expressed. High levels observed in pancreatic tissue.
配列類似性	Belongs to the protein kinase superfamily. Ser/Thr protein kinase family. Contains 1 KEN domain. Contains 1 protein kinase domain.
翻訳後修飾	Autophosphorylated.
細胞内局在	Endoplasmic reticulum membrane.

## 画像



**All lanes :** Anti-IRE1 antibody (ab37117)

**Lane 1 :** ab37117 at 0.5µg/ml + A20 cell lysate

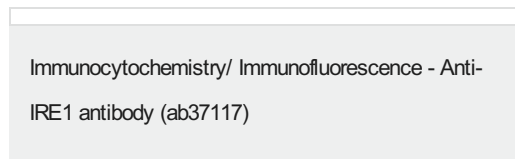
**Lane 2 :** ab37117 at 1µg/ml + A20 Cell lysate

**Lane 3 :** ab37117 at 2µg/ml + A20 cell lysate

**Predicted band size:** 110 kDa

**Observed band size:** 107 kDa

**Additional bands at:** 150 kDa, 55 kDa. We are unsure as to the identity of these extra bands.



Immunofluorescence of IRE1p in A20 cells using ab37117 at 10 ug/ml.

**Please note:** All products are "FOR RESEARCH USE ONLY. NOT FOR USE IN DIAGNOSTIC PROCEDURES"

### **Our Abpromise to you: Quality guaranteed and expert technical support**

---

- Replacement or refund for products not performing as stated on the datasheet
- Valid for 12 months from date of delivery
- Response to your inquiry within 24 hours
  
- We provide support in Chinese, English, French, German, Japanese and Spanish
- Extensive multi-media technical resources to help you
- We investigate all quality concerns to ensure our products perform to the highest standards

If the product does not perform as described on this datasheet, we will offer a refund or replacement. For full details of the Abpromise, please visit <https://www.abcam.co.jp/abpromise> or contact our technical team.

### **Terms and conditions**

---

- Guarantee only valid for products bought direct from Abcam or one of our authorized distributors