

# Anti-IRE1 antibody ab37073

★★★★★ **5 Abreviews**   **132 References**   画像数 8

### 製品の概要

製品名	Anti-IRE1 antibody
製品の詳細	Rabbit polyclonal to IRE1
由来種	Rabbit
アプリケーション	<b>適用あり:</b> WB, ICC, IHC-P
種交差性	<b>交差種:</b> Mouse, Rat, Human
免疫原	Synthetic peptide consisting of 16 amino acid from near the carboxy terminus (Human).
ポジティブ・コントロール	WB: Rat brain tissue lysate, A20 and HeLa cell lysates. IHC-P: Rat and Human small intestine tissue. ICC: A20 cells.
特記事項	<p>The Life Science industry has been in the grips of a reproducibility crisis for a number of years. Abcam is leading the way in addressing this with our range of recombinant monoclonal antibodies and knockout edited cell lines for gold-standard validation. Please check that this product meets your needs before purchasing.</p> <p>If you have any questions, special requirements or concerns, please send us an inquiry and/or contact our Support team ahead of purchase. Recommended alternatives for this product can be found below, along with publications, customer reviews and Q&amp;As</p>

### 製品の特性

製品の状態	Liquid
保存方法	Shipped at 4°C. Store at +4°C short term (1-2 weeks). Store at -20°C. Avoid freeze / thaw cycle.
バッファー	pH: 7.2 Preservative: 0.02% Sodium azide Constituent: PBS
精製度	Immunogen affinity purified
ポリ/モノ	ポリクローナル
アイソタイプ	IgG

### アプリケーション

The Abpromise guarantee

**Abpromise保証は、** 次のテスト済みアプリケーションにおけるab37073の使用に適用されます

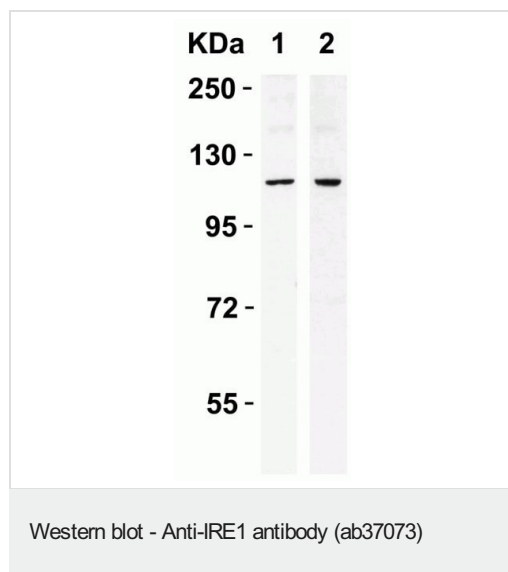
アプリケーションノートには、推奨の開始希釈率がありますが、適切な希釈率につきましてはご確認ください。

アプリケーション	Abreviews	特記事項
WB	★★★★★ (4)	Use a concentration of 0.5 - 2 µg/ml. Detects a band of approximately 107 kDa (predicted molecular weight: 110 kDa). Please note there is a smaller isoform of IRE1 in rat (predicted molecular weight: 68.6 kDa; accession number is EDM06401). Block for 2 hours at RT or overnight at 4°C using 5% non-fat milk. Primary ab incubation: 1 h incubation at RT in 5% NFDM/TBST.
ICC		Use a concentration of 1 - 2 µg/ml.
IHC-P		Use a concentration of 2 µg/ml. Perform heat mediated antigen retrieval with citrate buffer pH 6 before commencing with IHC staining protocol.

## ターゲット情報

機能	Senses unfolded proteins in the lumen of the endoplasmic reticulum via its N-terminal domain which leads to enzyme auto-activation. The active endoribonuclease domain splices XBP1 mRNA to generate a new C-terminus, converting it into a potent unfolded-protein response transcriptional activator and triggering growth arrest and apoptosis.
組織特異性	Ubiquitously expressed. High levels observed in pancreatic tissue.
配列類似性	Belongs to the protein kinase superfamily. Ser/Thr protein kinase family. Contains 1 KEN domain. Contains 1 protein kinase domain.
翻訳後修飾	Autophosphorylated.
細胞内局在	Endoplasmic reticulum membrane.

## 画像



**All lanes** : Anti-IRE1 antibody (ab37073) at 0.4 µg/ml

**Lane 1** : Caco-2 Cell Lysate

**Lane 2** : SK-N-SH Cell Lysate

Lysates/proteins at 15 µg per lane.

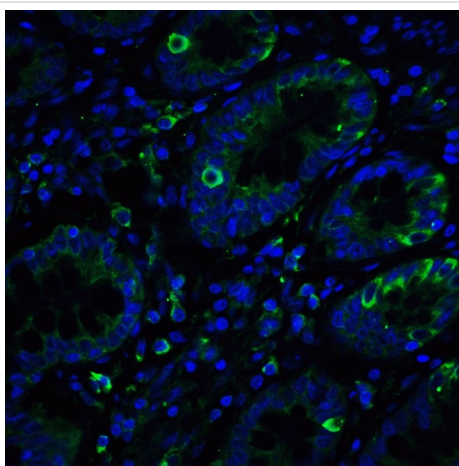
### Secondary

**All lanes** : Goat Anti-Rabbit IgG (HRP) at 1/10000 dilution

**Predicted band size:** 110 kDa

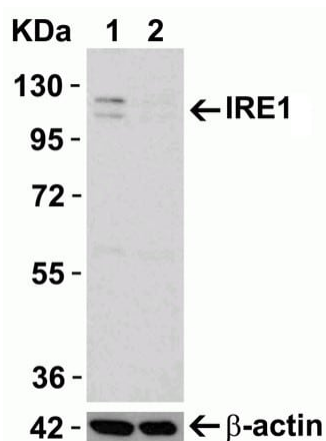
**Observed band size:** 110 kDa

**Diluting buffer and concentration:** 5% NFDM/TBST.



Immunohistochemistry (Formalin/PFA-fixed paraffin-embedded sections) - Anti-IRE1 antibody (ab37073)

Immunofluorescent analysis of 4% paraformaldehyde fixed Human Small Intestine Tissue labeling IRE1 with ab37073 at 20 µg/mL, followed by goat anti-rabbit IgG secondary antibody at 1/500 dilution (green) and DAPI staining (blue).



Western blot - Anti-IRE1 antibody (ab37073)

**All lanes :** Anti-IRE1 antibody (ab37073) at 0.5 µg/ml

**Lane 1 :** Wild-type HeLa Cell Lysate

**Lane 2 :** IRE1 knockout HeLa Cell Lysate

Lysates/proteins at 10 µg per lane.

**Secondary**

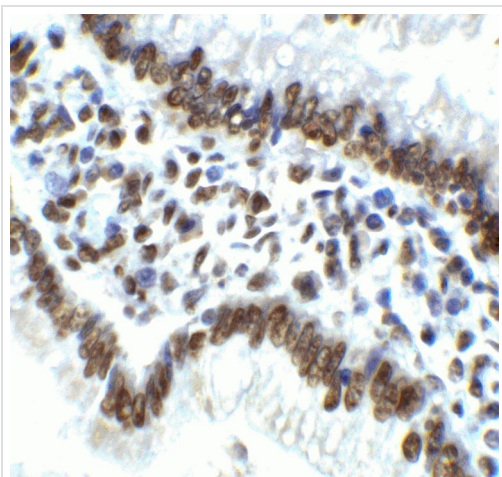
**All lanes :** Goat Anti-Rabbit IgG (HRP) at 1/10000 dilution

**Predicted band size:** 110 kDa

**Observed band size:** 110 kDa

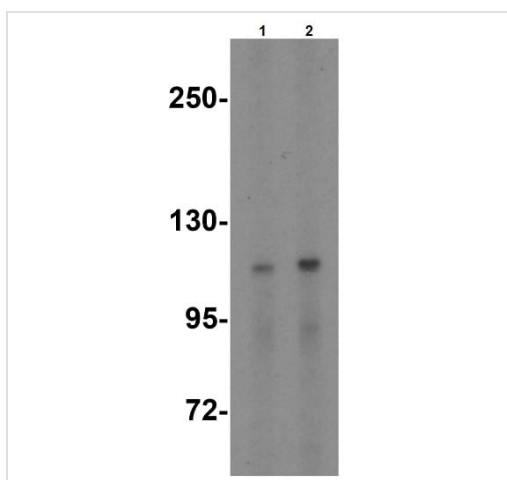
**Diluting buffer and concentration:** 1 hour incubation at room temperature in 5% NFDM/TBST.

Beta-actin antibody (1 µg/mL) used as loading control.



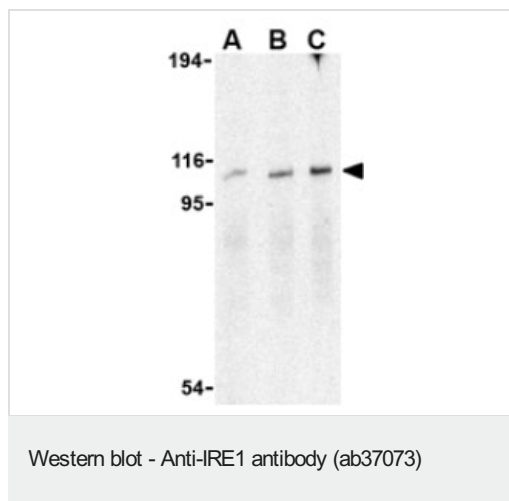
Immunohistochemistry (Formalin/PFA-fixed paraffin-embedded sections) - Anti-IRE1 antibody (ab37073)

Immunohistochemical analysis of paraffin-embedded Rat Small Intestine Tissue using ab37073 at 2  $\mu\text{g/ml}$ . Tissue was fixed with formaldehyde and blocked with 10% serum for 1 h at RT; antigen retrieval was by heat mediation with a citrate buffer (pH6). Samples were incubated with primary antibody overnight at 4°C. A goat anti-rabbit IgG H&L (HRP) at 1/250 was used as secondary. Counter stained with Hematoxylin.



Western blot - Anti-IRE1 antibody (ab37073)

Western Blot of rat brain lysate labeling IRE1 with Anti-IRE1 antibody (ab37073) at (1) 0.5 and (2) 1  $\mu\text{g/ml}$ .



**Lane 1 :** Anti-IRE1 antibody (ab37073) at 0.5 µg/ml

**Lane 2 :** Anti-IRE1 antibody (ab37073) at 1 µg/ml

**Lane 3 :** Anti-IRE1 antibody (ab37073) at 2 µg/ml

**All lanes :** A20 cell lysate

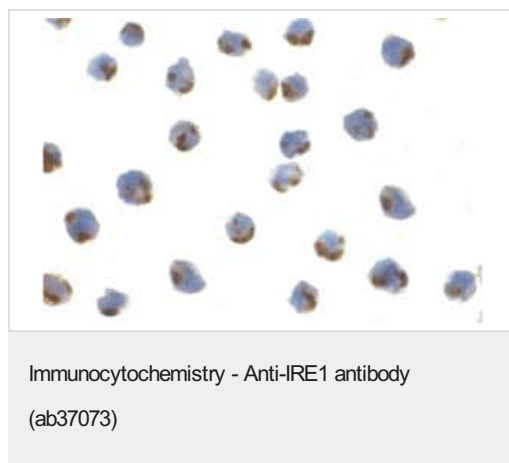
Lysates/proteins at 15 µg per lane.

**Secondary**

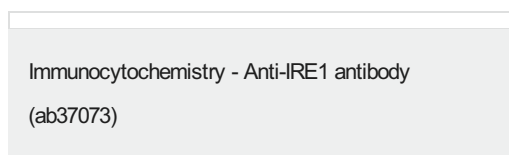
**All lanes :** goat anti-rabbit HRP at 1/10000 dilution

**Predicted band size:** 110 kDa

**Observed band size:** 107 kDa



ab37073, at 1 µg/ml, staining IRE1 in A20 cells with by ICC.



Immunocytochemistry/Immunofluorescence of IRE1p in A20 cells using ab37073 at 2 µg/ml.

**Please note:** All products are "FOR RESEARCH USE ONLY. NOT FOR USE IN DIAGNOSTIC PROCEDURES"

**Our Abpromise to you: Quality guaranteed and expert technical support**

- Replacement or refund for products not performing as stated on the datasheet
- Valid for 12 months from date of delivery
- Response to your inquiry within 24 hours
- We provide support in Chinese, English, French, German, Japanese and Spanish
- Extensive multi-media technical resources to help you
- We investigate all quality concerns to ensure our products perform to the highest standards

If the product does not perform as described on this datasheet, we will offer a refund or replacement. For full details of the Abpromise, please visit <https://www.abcam.co.jp/abpromise> or contact our technical team.

#### **Terms and conditions**

---

- Guarantee only valid for products bought direct from Abcam or one of our authorized distributors