

Anti-IPO5 antibody ab88695

画像数 4

製品の概要

製品名	Anti-IPO5 antibody
製品の詳細	Mouse polyclonal to IPO5
由来種	Mouse
アプリケーション	適用あり: WB, ICC/IF
種交差性	交差種: Rat, Human
免疫原	Recombinant full length protein within Human IPO5. The exact immunogen sequence used to generate this antibody is proprietary information. If additional detail on the immunogen is needed to determine the suitability of the antibody for your needs, please contact our Scientific Support team to discuss your requirements. (AAH45640.1)
ポジティブ・コントロール	WB: Rat brain tissue lysate; HeLa cell lysate; Karyopherin (importin) beta 3 transfected 293T cell lysate ICC/IF: HeLa cell
特記事項	<p>The Life Science industry has been in the grips of a reproducibility crisis for a number of years. Abcam is leading the way in addressing this with our range of recombinant monoclonal antibodies and knockout edited cell lines for gold-standard validation. Please check that this product meets your needs before purchasing.</p> <p>If you have any questions, special requirements or concerns, please send us an inquiry and/or contact our Support team ahead of purchase. Recommended alternatives for this product can be found below, along with publications, customer reviews and Q&As</p>

製品の特性

製品の状態	Liquid
保存方法	Shipped at 4°C. Upon delivery aliquot and store at -20°C or -80°C. Avoid repeated freeze / thaw cycles.
バッファー	pH: 7.40 Constituent: 100% PBS
精製度	Protein A purified
ポリ/モノ	ポリクローナル
アイソタイプ	IgG

アプリケーション

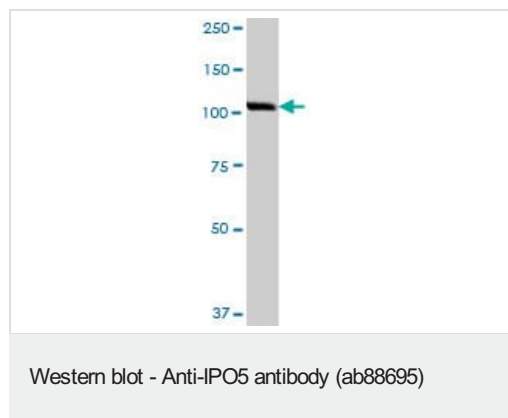
The Abpromise guarantee Abpromise保証は、次のテスト済みアプリケーションにおけるab88695の使用に適用されます
アプリケーションノートには、推奨の開始希釈率がありますが、適切な希釈率につきましてはご確認ください。

アプリケーション	Abreviews	特記事項
WB		Use a concentration of 1 µg/ml. Predicted molecular weight: 124 kDa.
ICC/IF		Use a concentration of 10 µg/ml.

ターゲット情報

機能	Functions in nuclear protein import as nuclear transport receptor. Serves as receptor for nuclear localization signals (NLS) in cargo substrates. Is thought to mediate docking of the importin/substrate complex to the nuclear pore complex (NPC) through binding to nucleoporin and the complex is subsequently translocated through the pore by an energy requiring, Ran-dependent mechanism. At the nucleoplasmic side of the NPC, Ran binds to the importin, the importin/substrate complex dissociates and importin is re-exported from the nucleus to the cytoplasm where GTP hydrolysis releases Ran. The directionality of nuclear import is thought to be conferred by an asymmetric distribution of the GTP- and GDP-bound forms of Ran between the cytoplasm and nucleus (By similarity). Mediates the nuclear import of ribosomal proteins RPL23A, RPS7 and RPL5. Binds to a beta-like import receptor binding (BIB) domain of RPL23A. In vitro, mediates nuclear import of H2A, H2B, H3 and H4 histones. In case of HIV-1 infection, binds and mediates the nuclear import of HIV-1 Rev.
配列類似性	Belongs to the importin beta family. Contains 6 HEAT repeats. Contains 1 importin N-terminal domain.
細胞内局在	Cytoplasm. Nucleus. Nucleus > nucleolus. Nucleus; nuclear rim. Found particularly in the nuclear rim and nucleolus.

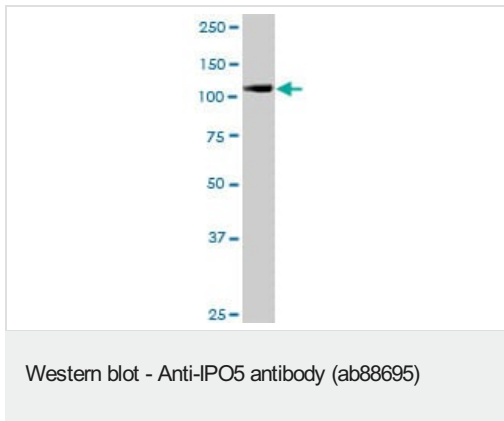
画像



Anti-IPO5 antibody (ab88695) at 1 µg/ml + rat brain tissue lysate at 50 µg

Predicted band size: 124 kDa

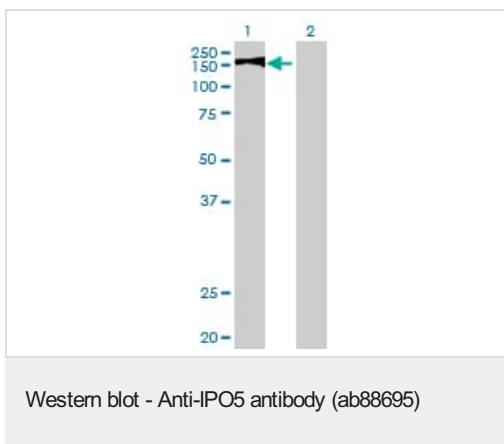
Observed band size: 110 kDa



Anti-IPO5 antibody (ab88695) at 1 µg/ml + HeLa cell lysate at 50 µg

Predicted band size: 124 kDa

Observed band size: 110 kDa



All lanes : Anti-IPO5 antibody (ab88695) at 1 µg/ml

Lane 1 : Karyopherin (importin) beta 3 transfected 293T cell lysate

Lane 2 : non transfected 293T cell lysate

Lysates/proteins at 25 µg per lane.

Predicted band size: 124 kDa

Observed band size: 160 kDa



ab88695, at 10 µg/ml, staining Karyopherin (importin) beta 3 in HeLa cell by immunofluorescence.

Please note: All products are "FOR RESEARCH USE ONLY. NOT FOR USE IN DIAGNOSTIC PROCEDURES"

Our Abpromise to you: Quality guaranteed and expert technical support

- Replacement or refund for products not performing as stated on the datasheet
- Valid for 12 months from date of delivery
- Response to your inquiry within 24 hours
- We provide support in Chinese, English, French, German, Japanese and Spanish
- Extensive multi-media technical resources to help you
- We investigate all quality concerns to ensure our products perform to the highest standards

If the product does not perform as described on this datasheet, we will offer a refund or replacement. For full details of the Abpromise, please visit <https://www.abcam.co.jp/abpromise> or contact our technical team.

Terms and conditions

- Guarantee only valid for products bought direct from Abcam or one of our authorized distributors