


Anti-IP3 receptor (phospho S1598) antibody ab111615

[1 References](#) [画像数 2](#)

製品の概要

製品名	Anti-IP3 receptor (phospho S1598) antibody
製品の詳細	Rabbit polyclonal to IP3 receptor (phospho S1598)
由来種	Rabbit
特異性	ab111615 detects endogenous levels of TPR1 only when phosphorylated at serine 1598(human)/1588(mouse).
アプリケーション	適用あり: IHC-P, ICC/IF
種交差性	交差種: Human 交差が予測される動物種: Mouse, Rat 
免疫原	Synthetic peptide. This information is proprietary to Abcam and/or its suppliers.
ポジティブ・コントロール	A549 cells; Human cervix carcinoma tissue.
特記事項	<p>This antibody showed negative results in Western Blot</p> <p>The Life Science industry has been in the grips of a reproducibility crisis for a number of years. Abcam is leading the way in addressing this with our range of recombinant monoclonal antibodies and knockout edited cell lines for gold-standard validation. Please check that this product meets your needs before purchasing.</p> <p>If you have any questions, special requirements or concerns, please send us an inquiry and/or contact our Support team ahead of purchase. Recommended alternatives for this product can be found below, along with publications, customer reviews and Q&As</p>

製品の特性

製品の状態	Liquid
保存方法	Shipped at 4°C. Store at -20°C. Stable for 12 months at -20°C.
バッファー	<p>pH: 7.40</p> <p>Preservative: 0.02% Sodium azide</p> <p>Constituents: PBS, 50% Glycerol (glycerin, glycerine), 0.88% Sodium chloride</p> <p>PBS (without Mg2+ and Ca2+)</p>
精製度	Immunogen affinity purified
特記事項 (精製)	ab111615 was affinity-purified from rabbit antiserum by affinity-chromatography using epitope-

	specific phosphopeptide. The antibody against non-phosphopeptide was removed by chromatography using non-phosphopeptide corresponding to the phosphorylation site
ポリ/モノ	ポリクローナル
アイソタイプ	IgG

アプリケーション

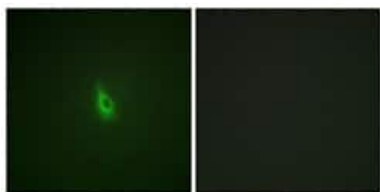
The Abpromise guarantee **Abpromise保証は、次のテスト済みアプリケーションにおけるab111615の使用に適用されます**
 アプリケーションノートには、推奨の開始希釈率がありますが、適切な希釈率につきましてはご検討ください。

アプリケーション	Abreviews	特記事項
IHC-P		1/50 - 1/100. Perform heat mediated antigen retrieval with citrate buffer pH 6 before commencing with IHC staining protocol.
ICC/IF		1/100 - 1/500.

ターゲット情報

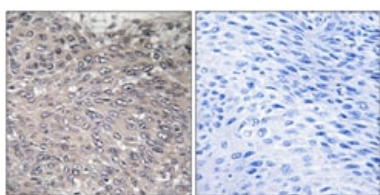
機能	Intracellular channel that mediates calcium release from the endoplasmic reticulum following stimulation by inositol 1,4,5-trisphosphate.
組織特異性	Widely expressed.
関連疾患	Defects in ITPR1 are the cause of spinocerebellar ataxia type 15 (SCA15) (SCA15) [MIM:606658]. Spinocerebellar ataxia is a clinically and genetically heterogeneous group of cerebellar disorders. Patients show progressive incoordination of gait and often poor coordination of hands, speech and eye movements, due to degeneration of the cerebellum with variable involvement of the brainstem and spinal cord. SCA15 is an autosomal dominant cerebellar ataxia (ADCA). It is very slow progressing form with a wide range of onset, ranging from childhood to adult. Most patients remain ambulatory.
配列類似性	Belongs to the InsP3 receptor family. Contains 5 MIR domains.
ドメイン	The receptor contains a calcium channel in its C-terminal extremity. Its large N-terminal cytoplasmic region has the ligand-binding site in the N-terminus and modulatory sites in the middle portion immediately upstream of the channel region.
翻訳後修飾	Phosphorylated by cAMP kinase. Phosphorylation prevents the ligand-induced opening of the calcium channels. Phosphorylated on tyrosine residues.
細胞内局在	Endoplasmic reticulum membrane.

画像



Immunocytochemistry/ Immunofluorescence - Anti-IP3 receptor (phospho S1598) antibody (ab111615)

ab111615 at 1/100 dilution staining ITPR1 in A549 cells by Immunofluorescence. The picture on the right is treated with the synthesized phosphopeptide.



Immunohistochemistry (Formalin/PFA-fixed paraffin-embedded sections) - Anti-IP3 receptor (phospho S1598) antibody (ab111615)

ab111615 at 1/50 dilution staining ITPR1 in paraffin-embedded Human Cervix tissue by Immunohistochemistry. The image on the right is treated with the synthesized phosphopeptide.

Please note: All products are "FOR RESEARCH USE ONLY. NOT FOR USE IN DIAGNOSTIC PROCEDURES"

Our Abpromise to you: Quality guaranteed and expert technical support

- Replacement or refund for products not performing as stated on the datasheet
- Valid for 12 months from date of delivery
- Response to your inquiry within 24 hours
- We provide support in Chinese, English, French, German, Japanese and Spanish
- Extensive multi-media technical resources to help you
- We investigate all quality concerns to ensure our products perform to the highest standards

If the product does not perform as described on this datasheet, we will offer a refund or replacement. For full details of the Abpromise, please visit <https://www.abcam.co.jp/abpromise> or contact our technical team.

Terms and conditions

- Guarantee only valid for products bought direct from Abcam or one of our authorized distributors